

2019-161: Crescent Communities, LLC

Current Zoning UMUD-O (Uptown Mixed Use, Optional, Site Plan Amendment)

UMUD-O (Uptown Mixed Use, Optional)

Requested Zoning UMUD-O (Uptown Mixed Use, Optional, Site Plan Amendment)

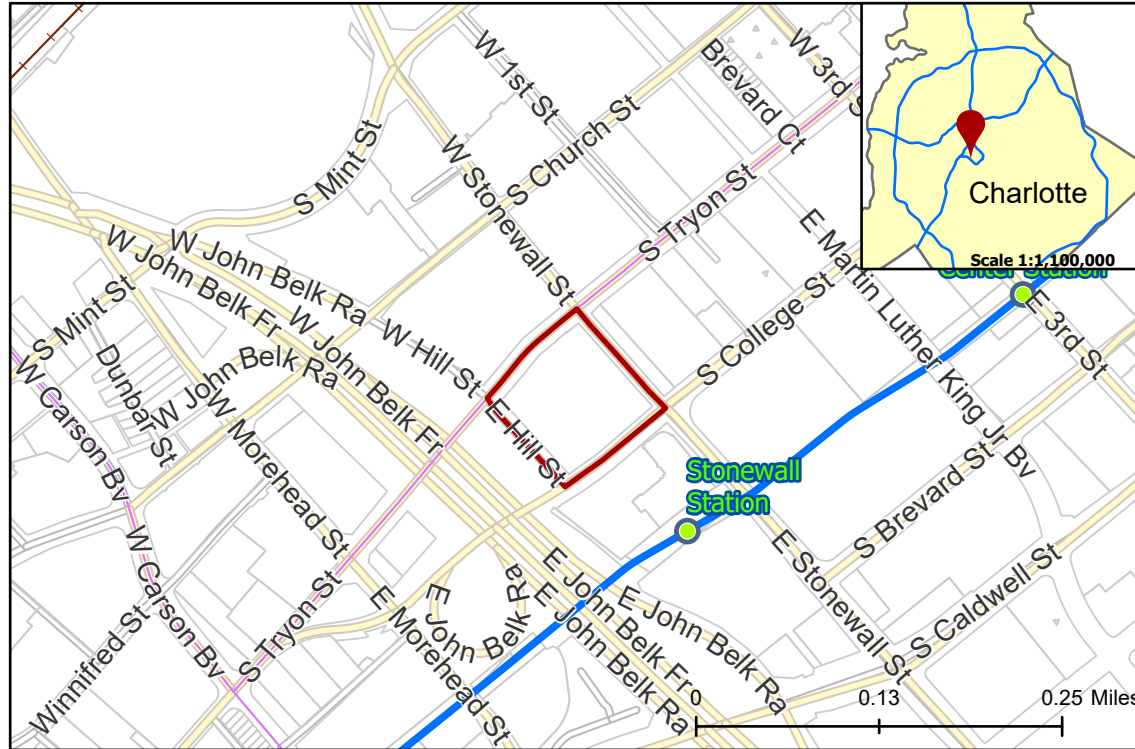
Approximately 2.4 acres

Location of Requested Rezoning

Rezoning Map



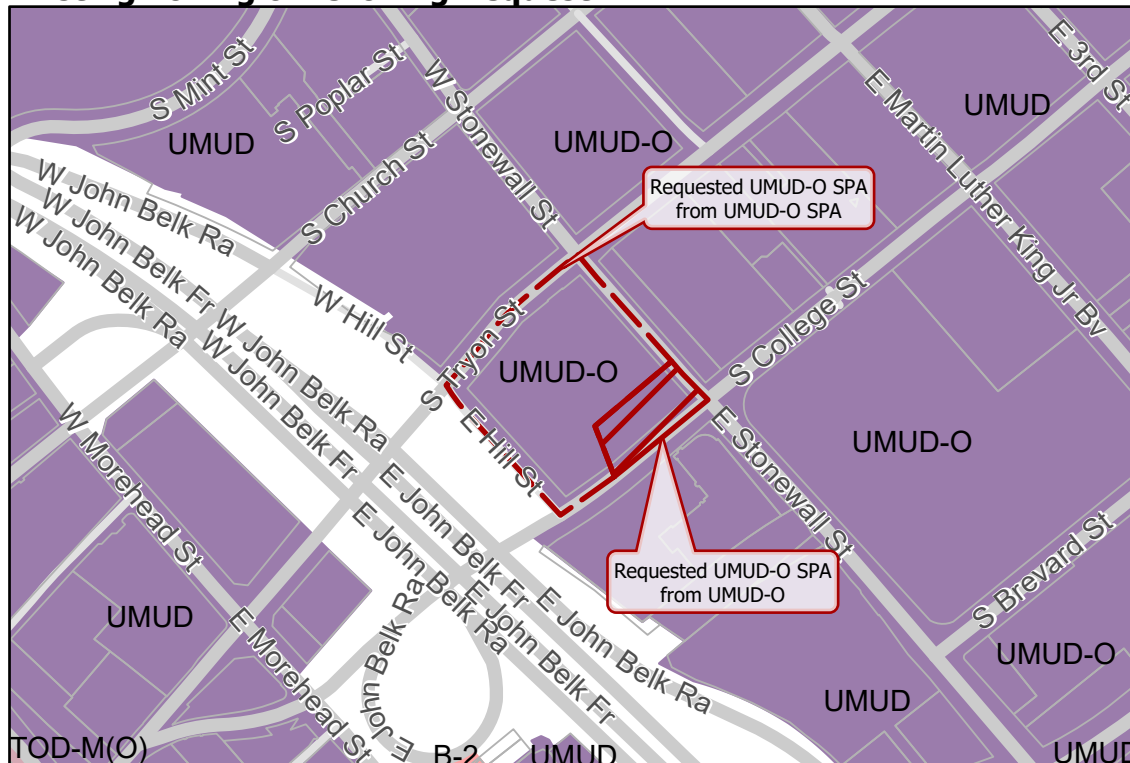
CHARLOTTE
PLANNING, DESIGN
& DEVELOPMENT



- Rezoning Area
- Inside City Limits
- Parcel
- LYNX Blue Line Station
- LYNX Blue Line
- Railway
- City Council District**
- 1-Larken Egleston



Existing Zoning & Rezoning Request



- Requested UMUD-O SPA from UMUD-O
- Requested UMUD-O SPA from UMUD-O SPA
- Zoning Classification**
- Business
- Uptown Mixed Use
- Transit-Oriented



Map Created 11/26/2019