

2019-120: M5 Properties

Current Zoning I-2 (General Industrial)

Requested Zoning TOD-CC (Transit Oriented Development-Community Center)

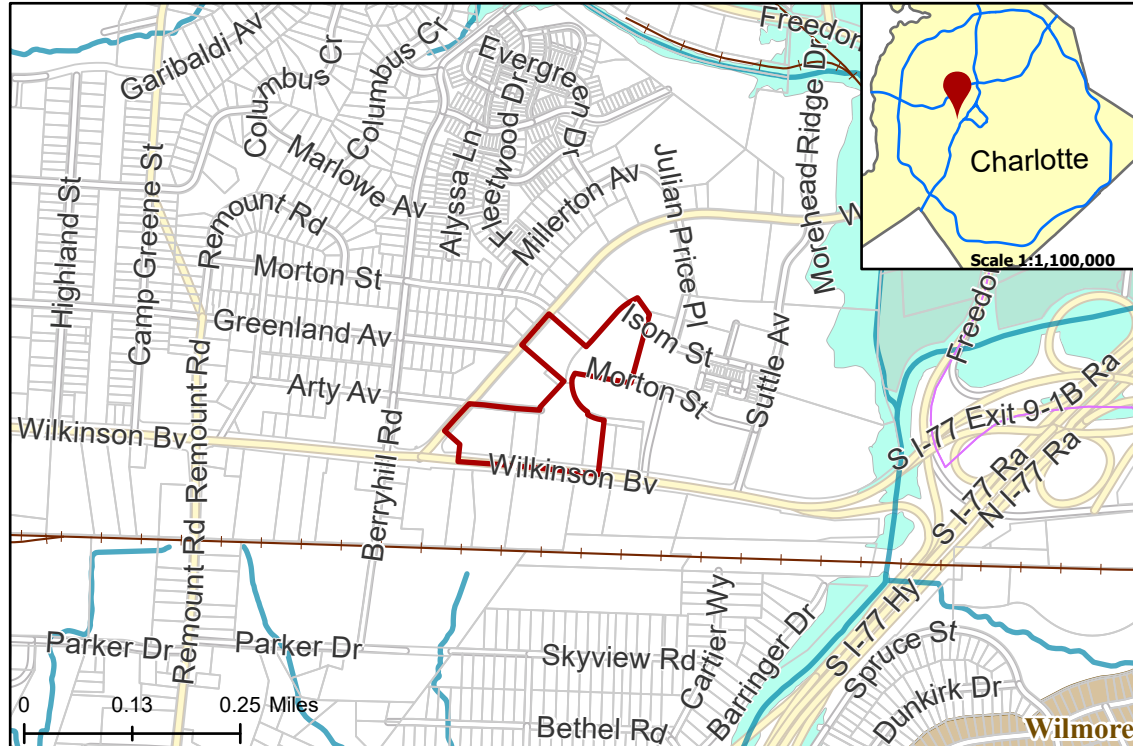
Approximately 8.5 acres

Rezoning Map



CHARLOTTE
PLANNING, DESIGN
& DEVELOPMENT

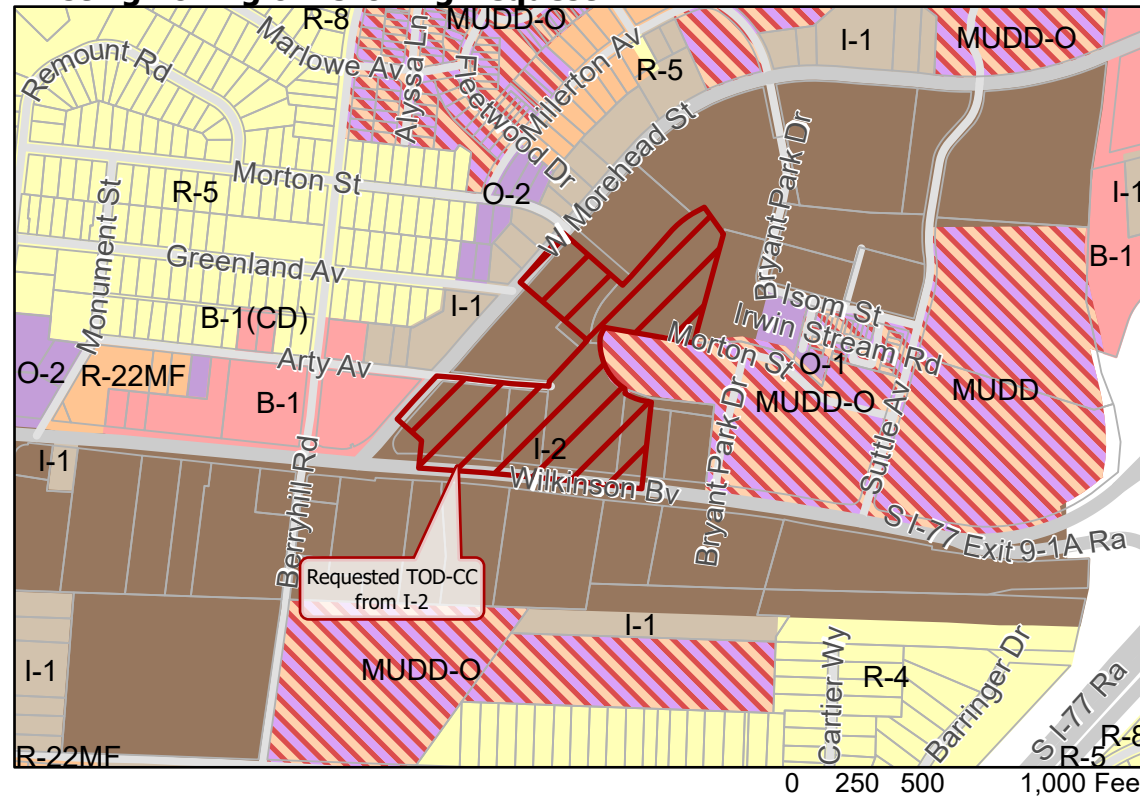
Location of Requested Rezoning



- 2019-120
- Inside City Limits
- Parcel
- Greenway
- Railway
- Streams
- FEMA Flood Plain
- West Morehead
- Historic Districts
- City Council District
- 3-LaWana Mayfield



Existing Zoning & Rezoning Request



- Requested TOD-CC from I-2
- Zoning Classification
- Single Family
- Multi-Family
- Office
- Business
- Light Industrial
- General Industrial
- Mixed Use



Map Created 8/15/2019