

2019-024 : Investiscore, LLC- Dawie Swart

Current Zoning I-1 (Light Industrial) I-2 (General Industrial)

Requested Zoning TOD-CC (Transit Oriented Development- Community Center)

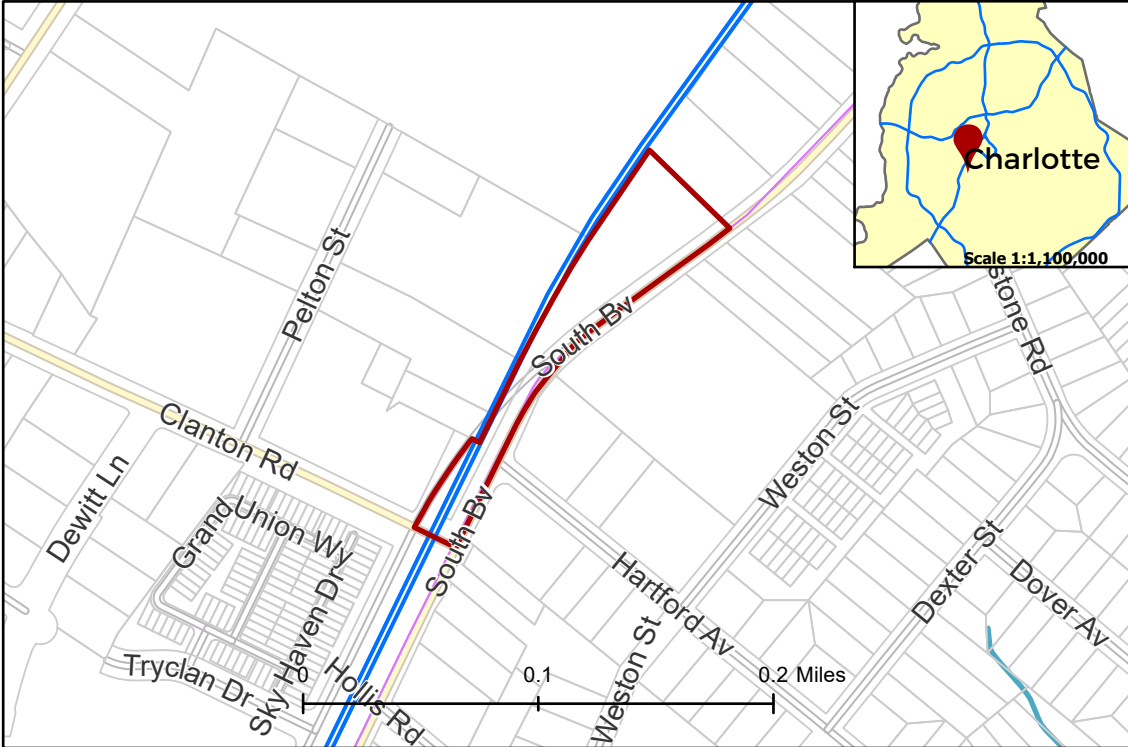
Approximately 1.738 acres

Location of Requested Rezoning

Rezoning Map



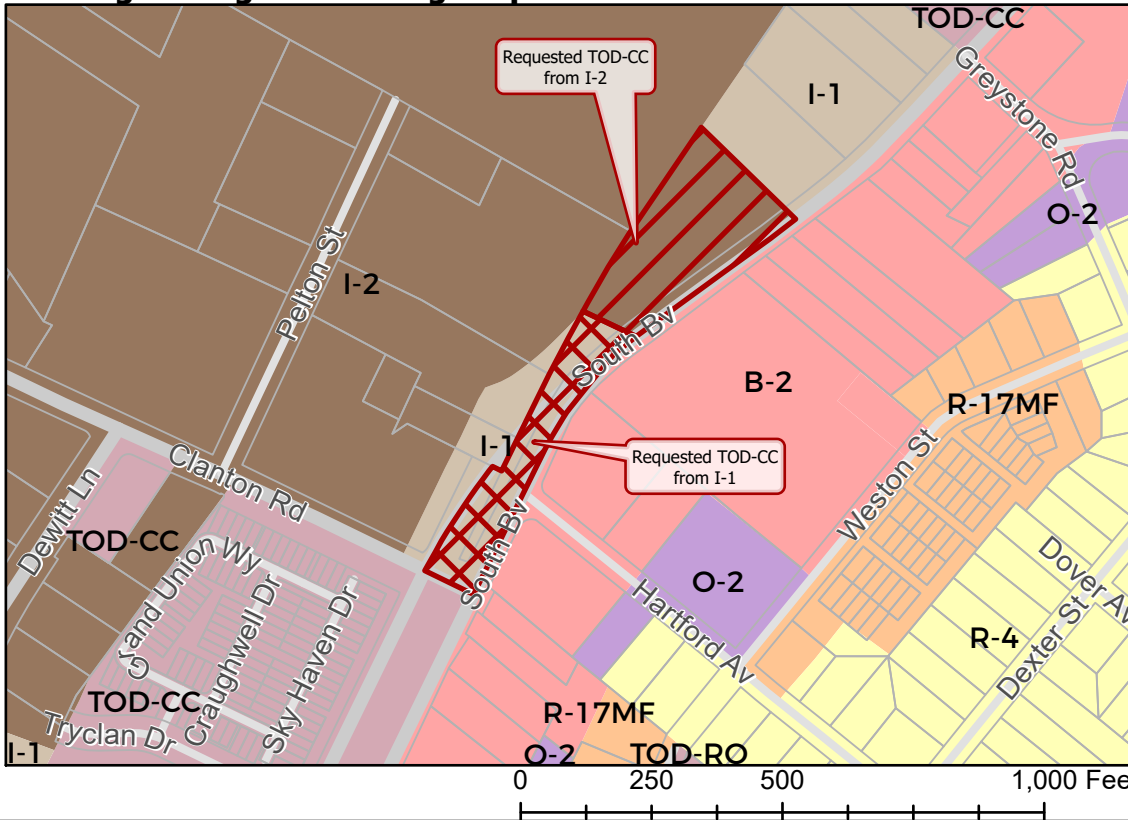
CHARLOTTE
PLANNING, DESIGN
& DEVELOPMENT



- 2019-024
- Inside City Limits
- Parcel
- LYNX Blue Line
- Buildings
- Streams
- City Council District
- 1-Larken Egleston



Existing Zoning & Rezoning Request



- Requested TOD-CC from I-2
- Requested TOD-CC from I-1
- Zoning Classification**
- Single Family
- Multi-Family
- Office
- Business
- Light Industrial
- General Industrial
- Mixed Use
- Transit-Oriented



Map Created 5/7/2019