

2019-012 : LIDL US Operations, LLC

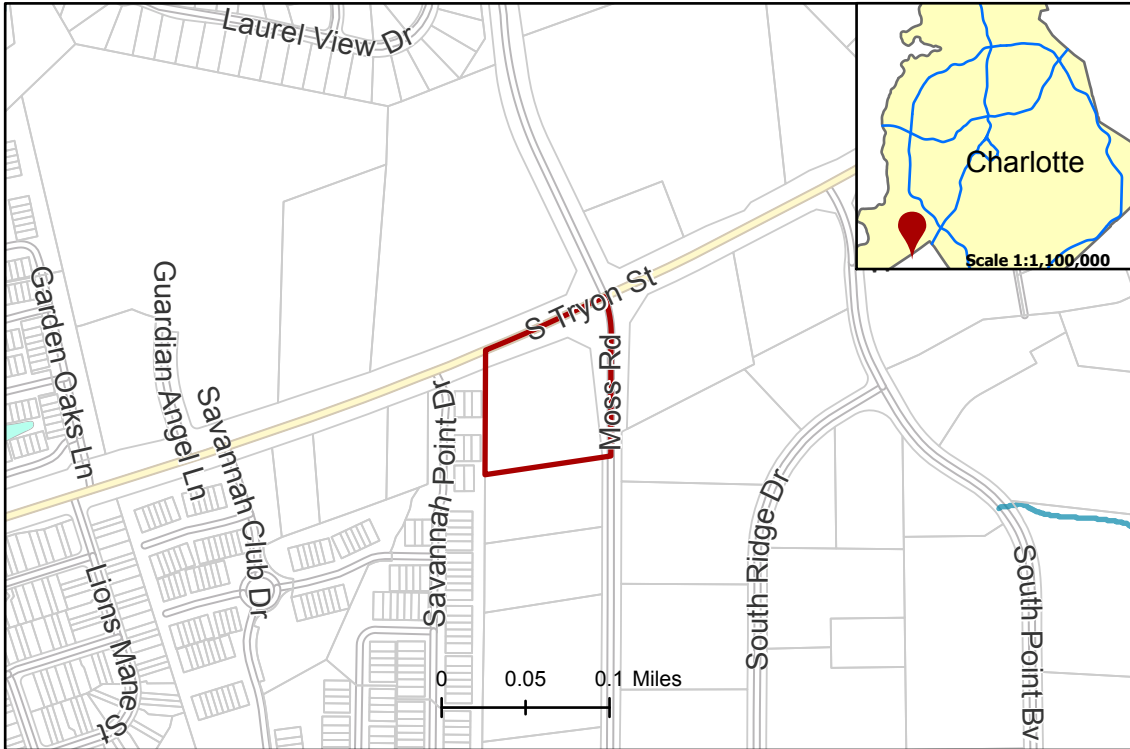
Rezoning Map

Current Zoning NS (Neighborhood Services)

Requested Zoning NS SPA (Neighborhood Services, Site Plan Amendment)

Approximately 2.841 acres

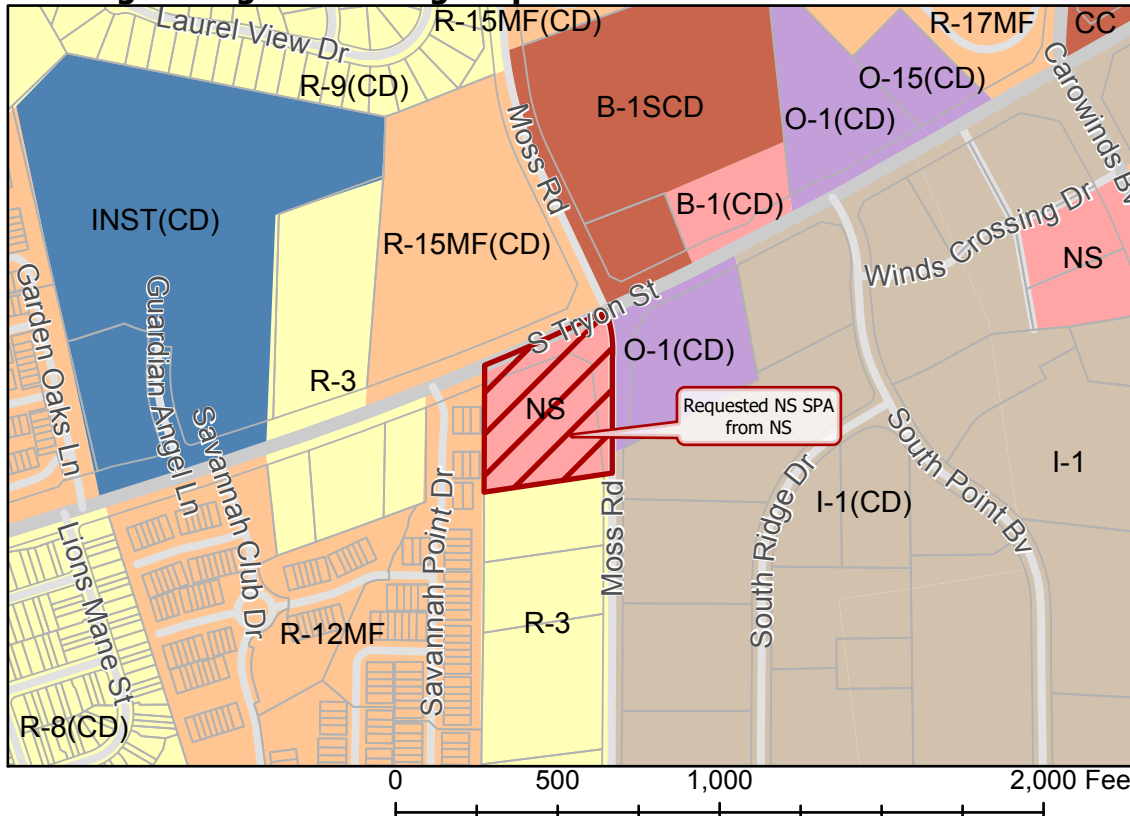
Location of Requested Rezoning



- 2019-012
- Inside City Limits
- Parcel
- Streams
- FEMA Flood Plain
- City Council District**
- 3-LaWana Mayfield



Existing Zoning & Rezoning Request



- Requested NS SPA from NS
- Zoning Classification**
- Single Family
- Multi-Family
- Institutional
- Office
- Business
- Commercial Center
- Light Industrial



Map Created 1/14/2019