



American Small Houses (c. 1940)
Merriman Avenue - Wilmore Historic District

Four Rooms and Bath



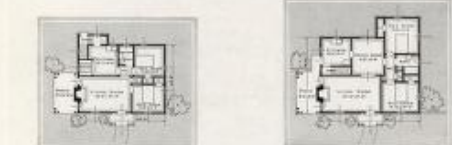
The Winchester is 10 feet wide by 26 feet 4 inches long. Outside measurements are given in parentheses. For specifications see pages 1 and 2.

The Living Room: This pleasant, well-lighted room (it has three windows) offers ample room for comfortable living and entertaining and fine wall space for your pictures. The entrance is reached through the plastered opening. The coat closet is in the entrance hall—right opposite the front door.

The Dining Room: Has two windows and will comfortably seat six people. The kitchen, a cheerful time and soap saving room. It has two windows, good cabinet space to the right of the sink and above sink and refrigerator, and room for your range. A door leads to the grade door leading where the cellar stair is directly opposite the grade door.

The Bedrooms: Two excellent bedrooms each with large closet and two windows for correct light and cross ventilation. The master bedroom provides a linen closet and large storage closet.

No. 3317-A—No. 3317-B—Owner Bill's House. Already Cut and Fitted. Monthly Payments as Low as \$24 to \$40



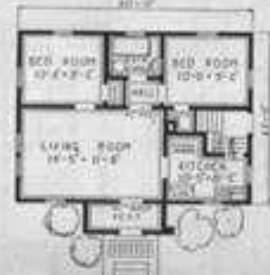
HOME CONSTRUCTION DIVISION



Popular Style Cottage Four Rooms and Bath

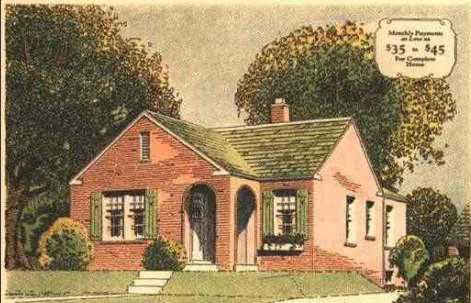
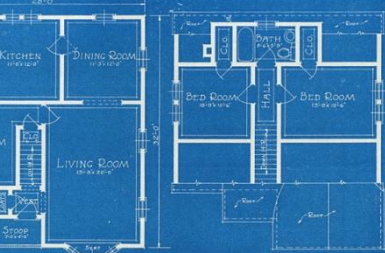
Fair Oaks—No. 13382—As Low as \$25 a Month

Be completely comfortable without the strain of bookkeeping, financing, or furnishing a house larger than you really need. The shingled Fair Oaks with shutters and circle head door is charming. Regularly, 36 ft. lot. Its four sunny rooms all have cross-ventilation. Bath, hall, a bedroom, and a closets, are at back for quiet. Vestibule, refrigerator nook, and side entrance to kitchen or basement.



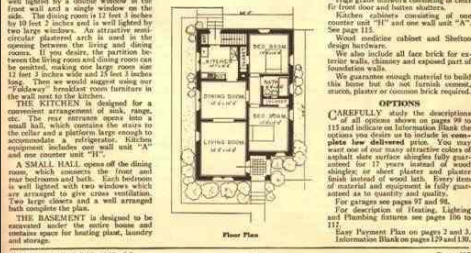
The WORTHINGTON

To prospective home builders who have looked high and low for an attractive, well planned, six-room home at a price within the means of the average family, the Worthington should have a strong appeal. It cannot help but satisfy those who seek the maximum in living comfort for a small investment.



The Gairwood

No. 224—Already Cut and Fitted for One Bedroom and Bath. Monthly Payments \$35 to \$45



The ROSEHILL

6 Rooms and Bath. Average \$42.50 a month. Price \$2162

A BREATH of Old Quebec—an ultra modern home, copying the fine, stately French Colonial style of architecture that has lived through many centuries of ever-changing fashions. The Rosehill, like the masterpieces of art, demonstrates the beauty of simplicity. The Rosehill is superbly suited to the American family, whether they live in the city, the suburbs or the country. Nothing has been omitted that might add to your comfort, convenience, or happiness. The price you will find when you point it out and say, "That's mine," will be equaled by the satisfaction and content living in it will bring your family.



The MAYFAIR

Six Rooms and Bath

THE Cape Cod home is popular because it is beautiful and economical to build. The wide front porch, the bluish Colonial door entrance—all lead to the charm of the Mayfair.



SMALL LOW-COST HOMES FOR THE SOUTH



\$100

Lela Ross Wilburn - Architect
105 Peters Building - Atlanta, Georgia

HOUSE-OF-THE-MONTH *Book of* SMALL HOUSES



Edited by HAROLD E. GROUP

Fifty-six houses, costing from \$5,000 to \$15,000, planned by America's foremost architects in the small-house field, with complete floor plans and elevations.

These houses are designed to comply with the standards and construction requirements of the F.H.A. (*Federal Housing Administration*)

The electrical layout has been checked and approved by the National Adequate Wiring Bureau.

COMPLETE BLUEPRINTS AND SPECIFICATIONS ARE AVAILABLE FOR EVERY HOUSE AT NOMINAL COST

THE HISTORY OF A POSTWAR PREFABRICATED HOUSING EXPERIMENT



THE *LUSTRON* HOME

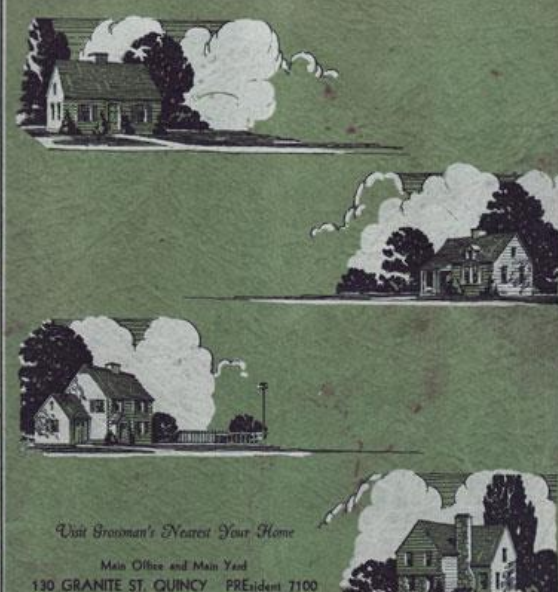


Thomas T. Fetter

Vincent Kohler,
Contributing
Author

New Ideas by Small Home Architects

PREMIER SMALL HOMES



Visit Grossman's Nearest Your Home

Main Office and Main Yard
130 GRANITE ST. QUINCY PRESIDENT 7100

ATLANTIC, 40 Hancock St. BILERICA, Boston Rd. FITZBURG, Westington St. MALDEN, 240 Eastern Ave. NEW BEDFORD, 27 Ashley Blvd. TAUNTON, Oak St. at Depot WELLESLEY, 27 Washington St.	Quincy 0991 Salem 442 Fitchburg 2111 Malden 0774 New Bedford 1-7438 Taunton 1300 Wellesley 0100
---	---

"SERVING NEW ENGLAND A HALF CENTURY"
GROSSMAN'S
EVERYTHING FOR BUILDING AND MODERNIZING

POPULAR HOMES

smart house with a FUTURE



NATIONAL REGISTER BULLETIN

National Park Service
U.S. Department of the Interior

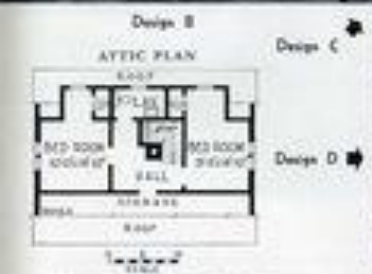
HISTORIC RESIDENTIAL SUBURBS

GUIDELINES FOR EVALUATION AND DOCUMENTATION
FOR THE NATIONAL REGISTER OF HISTORIC PLACES



Architectural Characteristics

- ✓ Compact, one-story
- ✓ Gable Roof
- ✓ Simply, tightly massed
- ✓ Simply detailed
- ✓ 3-5 Rooms
- ✓ Multiple floor-plan options
- ✓ Optional Features:
 - Small portico or stoops
 - Porches
 - Dormers
 - Fireplaces
 - Side garages or carports



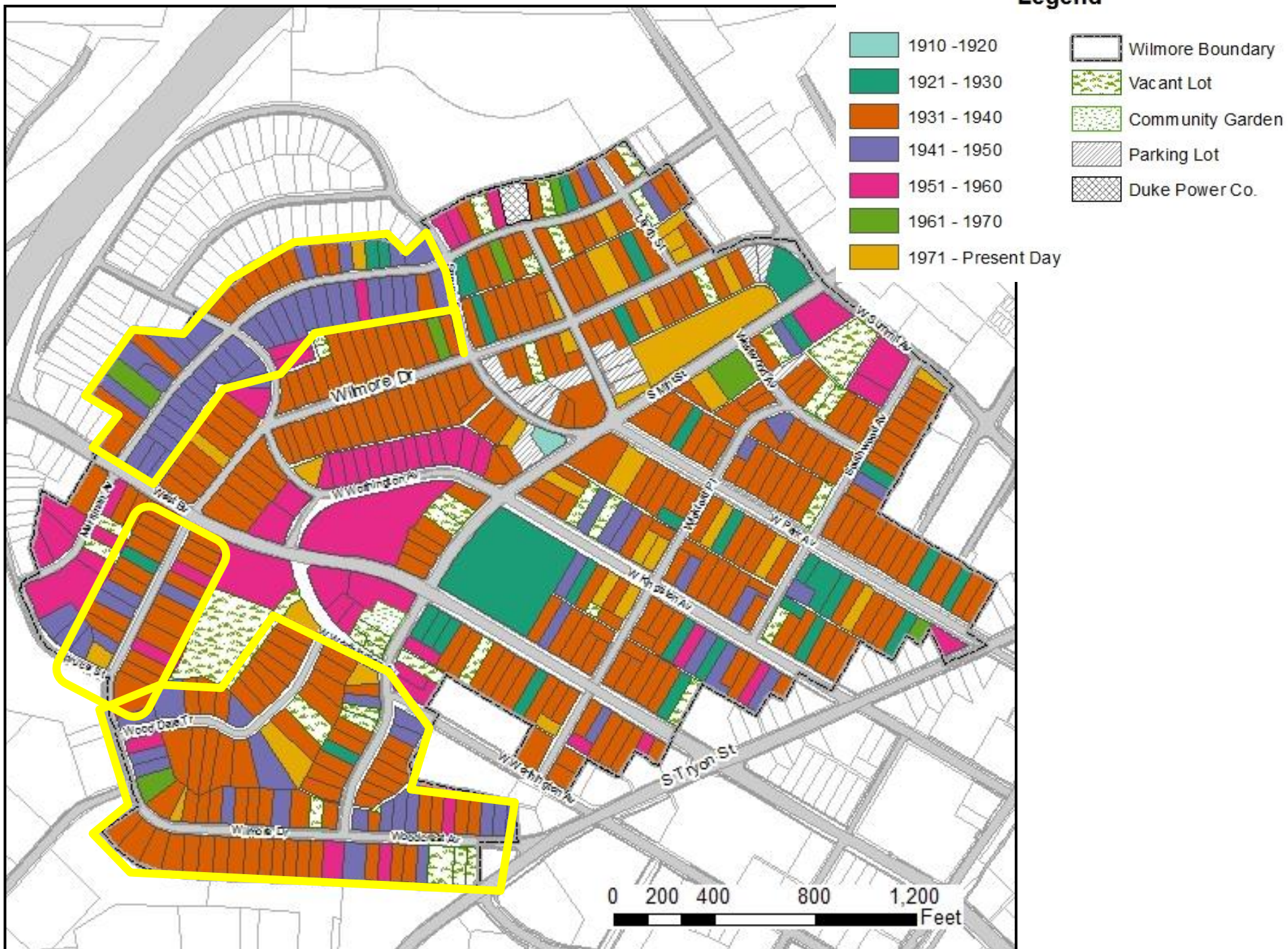
THE CONCORD—One of Aladdin's Newest—

Detachable is given this charming design by an entrance at most original and appealing. Pillars grace the gabled veranda while an arched ceiling adds a new touch to the design. Narrow side lights on each side of the front door add light to the veranda. The main structure of the Concord is beautifully proportioned. Besides a splendidly spacious living room, the first floor contains a suite including bedroom, library, linen closet, and dining closet. These are entered from the separate hall from which the stairway also leads to the second floor. Grade cellar entrance occupies the space under the main stairway. All four dormer windows have double exposure for light and air. The fireplace may be built in as shown or omitted if desired. On the second floor is found two well-placed bedrooms, bathroom, and four closets. Always keep in mind the high quality of materials built into all Aladdin Homes and that this quality can be had at such great economies only from The Aladdin Company. The Beneficial features backed by volume production is the reason. Our Golden Rule Service and money back guarantee are your protection. Complete detail specifications mailed on request.

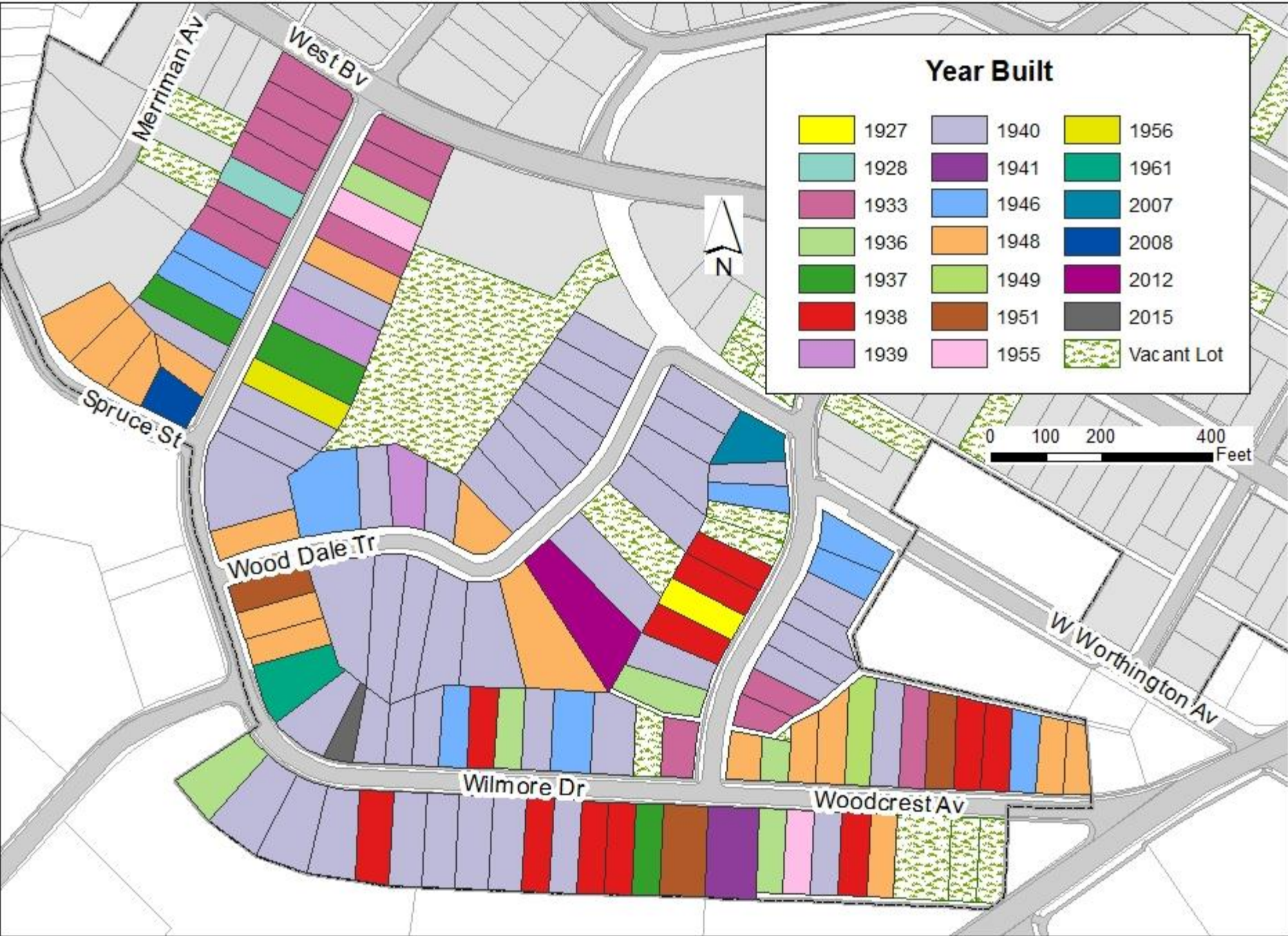


Shipment of any Aladdin Home can be made a few days after receipt of order.

Legend







Recommended Best Practices

- The simplicity of the American Small House form is considered its primary character-defining feature.
- Large alterations to the footprint, such as additions that alter the front facade or modify the roofline, should be considered significant and disqualify the property from individual contributing status for National Register purposes.
- To maintain significance, an American Small House should:
 - Retain original massing, and additions, if present, do not detract from the historic appearance
 - Retain original exterior siding materials, or materials appear original
 - Retain original doors and windows
 - Retain original roofline (incompatible dormers and second story additions are not acceptable)