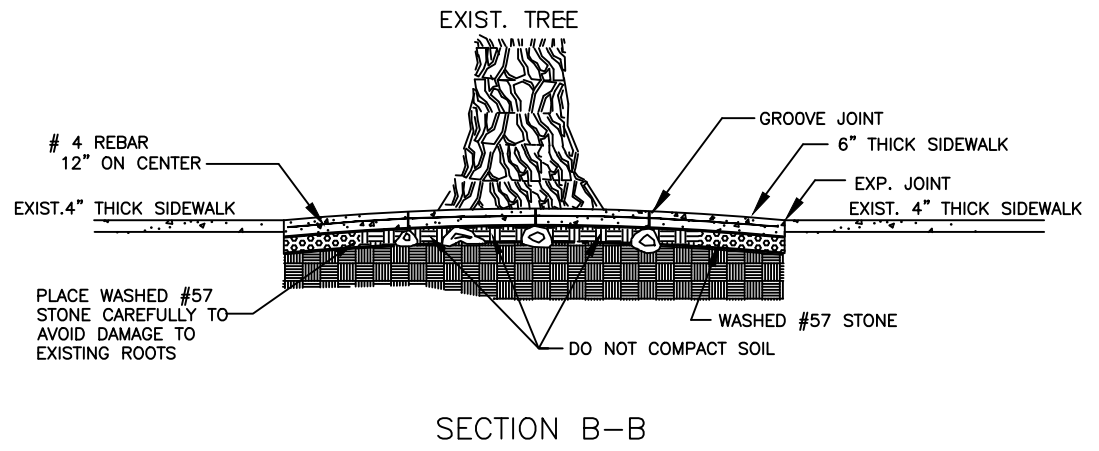
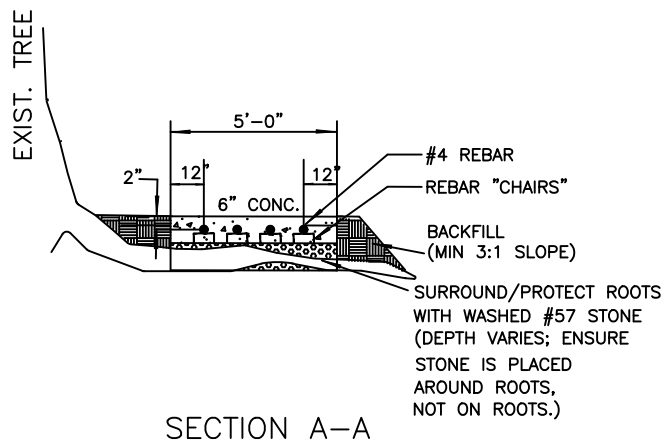


NOTES:

1. BRIDGING LENGTH IS A MINIMUM OF 1 LINEAR FOOT OF BRIDGING PER INCH OF DIAMETER AT BREAST HEIGHT (DBH). BASED ON FIELD CONDITIONS, MAY BE LONGER AS NEEDED.
2. NOT TO BE USED WHEN LESS THAN 4' WIDE PLANTING STRIP BETWEEN SIDEWALK AND BACK OF CURB.



CITY OF CHARLOTTE
LAND DEVELOPMENT STANDARDS
INCLUDES CHARLOTTE ETJ

REINFORCED CONCRETE SIDEWALK (BRIDGING TREE ROOTS)

STD. NO.	REV.
40.11	23