



Charlotte Equitable Development Commission

Tuesday, April 19, 2022

3:00 – 4:30 p.m.

Charlotte Mecklenburg Government Center

Hosted virtually

AGENDA

- I. Agenda Overview and Opening Remarks from Chair**
- II. Charlotte Future 2040 Comprehensive Plan Connection to CEDC**
 - Presentation by Planning, Design and Development Dept., Alysia Osborne**
- III. Priority Setting by CEDC**
 - Brainstorming session – Input and Discussion**

Staff Resources: Liz Babson, Director of Charlotte Department of Transportation

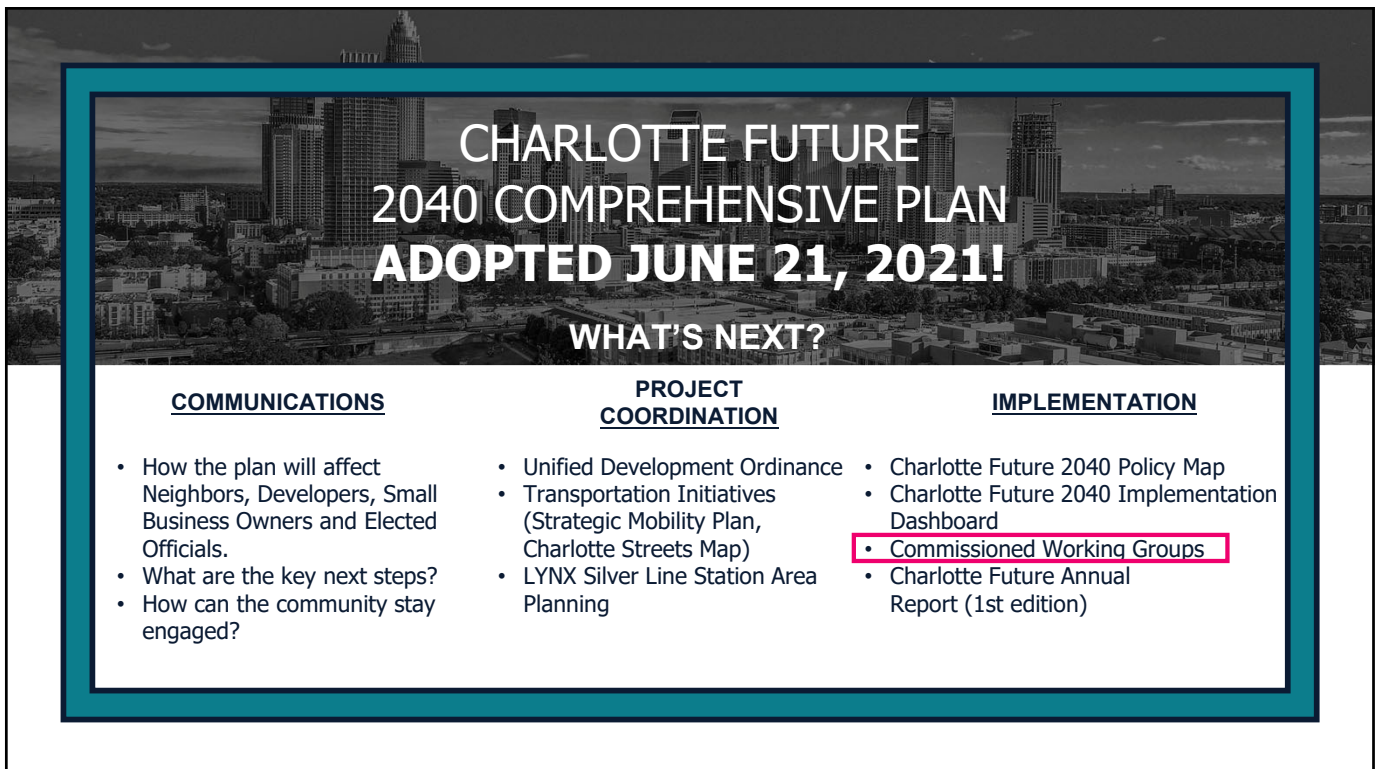


CHARLOTTE FUTURE | 2040 COMPREHENSIVE PLAN

OUR CITY. OUR PLAN. OUR FUTURE.

Alysia Davis Osborne, AICP
Charlotte Planning, Design and Development Department

1



**CHARLOTTE FUTURE
2040 COMPREHENSIVE PLAN
ADOPTED JUNE 21, 2021!**

WHAT'S NEXT?

<u>COMMUNICATIONS</u>	<u>PROJECT COORDINATION</u>	<u>IMPLEMENTATION</u>
<ul style="list-style-type: none"> • How the plan will affect Neighbors, Developers, Small Business Owners and Elected Officials. • What are the key next steps? • How can the community stay engaged? 	<ul style="list-style-type: none"> • Unified Development Ordinance • Transportation Initiatives (Strategic Mobility Plan, Charlotte Streets Map) • LYNX Silver Line Station Area Planning 	<ul style="list-style-type: none"> • Charlotte Future 2040 Policy Map • Charlotte Future 2040 Implementation Dashboard • Commissioned Working Groups • Charlotte Future Annual Report (1st edition)

2

What is the Comprehensive Plan?



- Guides our growth over the next 20 years
- A **“living document”** that integrates community input and best practices for growth, development and capital investments
- Addresses equity, transportation, quality of life, economic development, jobs, upward mobility, affordable housing, health, safety, and sustainability



3

10 PLAN GOALS

- | | |
|--|---|
| 01 10-MINUTE NEIGHBORHOODS | 06 HEALTHY, SAFE, & ACTIVE COMMUNITIES |
| 02 NEIGHBORHOOD DIVERSITY & INCLUSION | 07 INTEGRATED NATURAL & BUILT ENVIRONMENTS |
| 03 HOUSING ACCESS FOR ALL | 08 DIVERSE & RESILIENT ECONOMIC OPPORTUNITY |
| 04 TRANSIT- & TRAIL-ORIENTED DEVELOPMENT | 09 RETAIN OUR IDENTITY & CHARM |
| 05 SAFE & EQUITABLE MOBILITY | 10 FISCALLY RESPONSIBLE |

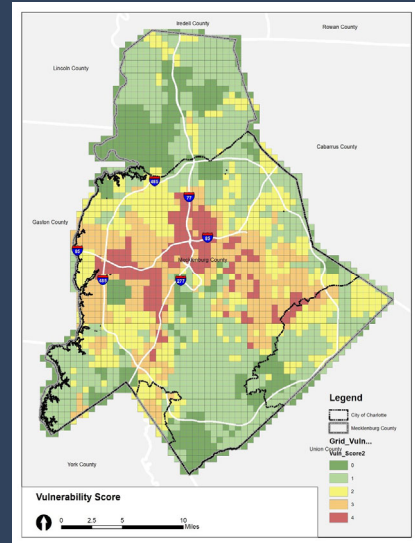


4

EQUITABLE GROWTH FRAMEWORK

What are Greatest Needs and Opportunity?

- Vulnerability to Displacement Overlay
- Access to Essential Amenities, Goods and Services
- Access to Housing Opportunity
- Access to Employment Opportunity
- Environmental Justice

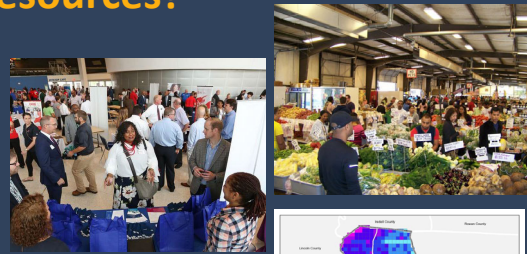


5

EQUITY IN ACTION

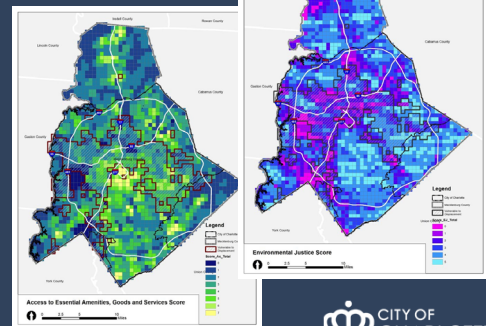
How and Where to Prioritize Limited Resources?

- Place and Amenity Priorities in the Plan
- Place Type Mapping
- Zoning District Mapping
- Community Area Planning



How to Ensure Costs and Benefits are Equitable?

- CIP
- Public-Private Partnerships
- Community Benefits Agreements
- Development Impact Fees
- Other Tools



6

INCLUSIVE CHANGE MANAGEMENT

How to Ensure Costs and Benefits of Growth are Equitable

- Promoting Inclusion and Diversity
- Facilitating Transitions Over Time
- Understanding Market Readiness and Pressure
- Addressing Adjacencies and Ensuring Access



What's in the Implementation Strategy?

CHARLOTTE FUTURE 2040 COMPREHENSIVE PLAN



Committee Support



- **Council-Created**
 - Neighborhood Equity and Stabilization Commission (NEST)
 - Charlotte Equitable Development Commission (CEDC)
- **Recommended in the Plan**
 - Community Benefits Task Force
 - Implementation Committee



9



July 8, 2021

TO: City Council Members
FROM: *Wesley V. Lyles*
SUBJECT: Charlotte Future 2040 Comprehensive Plan – New Advisory Boards

I am pleased to announce the formation of two new advisory boards approved through the adoption of the Charlotte Future 2040 Comprehensive Plan. These advisory boards are a direct result of Council's engagement during the Comprehensive Plan discussion earlier this year. The two boards are the Charlotte Neighborhood Equity and Stabilization Commission (Charlotte's NEST) and the Charlotte Equitable Development Commission.

These two commissions must begin their important work of developing strategies and providing recommendations. Due to the urgency of this work, I directed staff to create the framework of these two commissions and to initiate a process for appointments. I have provided a brief summary of the two new commissions below; full descriptions of the Commissions are attached for your reference.

Charlotte's Neighborhood Equity and Stabilization Commission (Charlotte's NEST)

A 15-member commission charged with reviewing and recommending specific anti-displacement strategies and specific tools for protecting residents of moderate to high vulnerability of displacement prior to the implementation of the Plan. The Commission will be supported by City staff from Housing & Neighborhood Services and make regular reports to the Great Neighborhoods Committee.

Charlotte Equitable Development Commission

A 9-member commission charged with advising in the assessment of infrastructure throughout the city and recommending strategies that balance equitable investments in areas most in need, including areas with absent and insufficient facilities, areas growing fastest, and areas targeted for growth. The Commission will work with the Office of

The Charge:

Charlotte Equitable Development Commission

A 9-member commission charged with advising in the assessment of infrastructure throughout the city and recommending strategies that balance equitable investments in areas most in need, including areas with absent and insufficient facilities, areas growing fastest, and areas targeted for growth. The Commission will work with the Office of

Strategy and Budget to provide input on the development of the city's proposed Capital Investment Plan. This Commission will be supported by City staff from the Office of Strategy and Budget and provide regular updates to the Budget and Effectiveness Committee.

Staff has recommended that both Commissions be established for three years. At the conclusion of the three-year period, if necessary, City Council may determine whether to extend the charge of the Commissions at that time.

10

Community Area Planning (CAP)

Purpose

Community Area Plans are a **neighborhood-based approach to more detailed planning** to provide detailed strategies for places, transportation, infrastructure, community facilities and amenities.

Approach

Using Community Area Plans **15 Planning Geographies**, CAP will be more coordinated, efficient and effective structure for neighborhood planning. Our goal is to **complete Five (5) Planning Geographies in Three (3) phases beginning in fall 2022.**

Key Process Steps of CAP

- Project Initiation + Community Engagement Strategy
- Community Area Vision & Goals
- Detailed Place Type Review & Focus Area Planning
- Infrastructure & Amenities
- Implementation



Community Area Planning Geographies



11

Planning Continues

ACTIVITY

	2022	2023	2023	2024+
2040 Policy Map Adoption		SPRING		
Unified Development Ordinance Adoption		SUMMER		
2040 Comprehensive Plan Annual Report		SUMMER / FALL		
Launch Community Planning Academy		SUMMER / FALL		
Develop Community Area Planning Toolkit		SUMMER / FALL		
Initiate Community Area Planning Process		FALL / WINTER		
Alignment Rezoning (proactive rezonings of Centers; remainder of the City to follow Community Area Planning)			WINTER	



12

4.20.2022
 CEDC Brainstorm
 Summary

1

Themes

- Understand performance and equity metrics
- Updates on program performance
- Peer-city benchmarking
- Understand funding streams
- Support employment opportunities
- Ensure intentional engagement
- Identify areas of influence

PLANS	PROGRAMS
2040 Comprehensive Plan	Corridors of Opportunity
Community Area Plans	Capital Improvement Program
Strategic Mobility Plan	

2

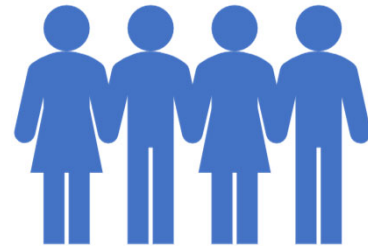
Influence

Plans

- Assess and understand existing conditions
- Provide input that supports equitable growth

Programs

- Develop strategies that support implementation
- Propose equity measures



3

Work Plan

- Determine focus areas
- Identify where more information is needed
- Align efforts with existing programs
- Identify opportunities to collaborate
- Provide input and recommendations



4