

# Shared Mobility Program

**BICYCLE ADVISORY COMMITTEE**

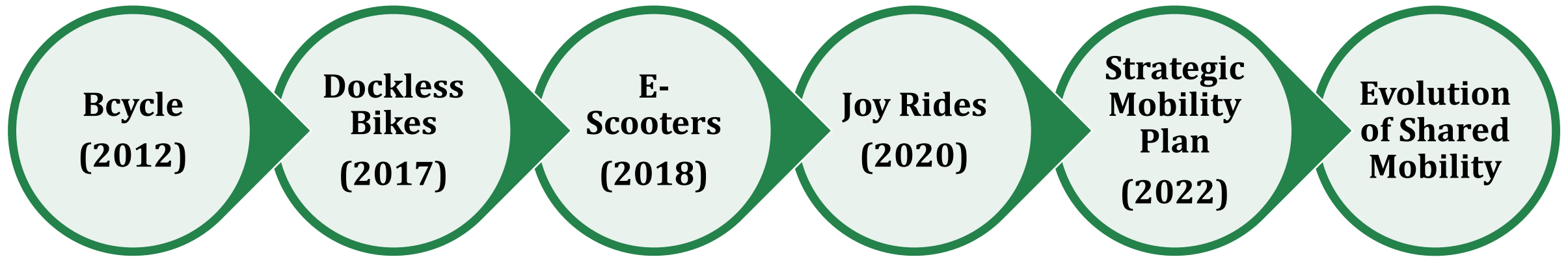
*NOVEMBER 26, 2024*



# Overview

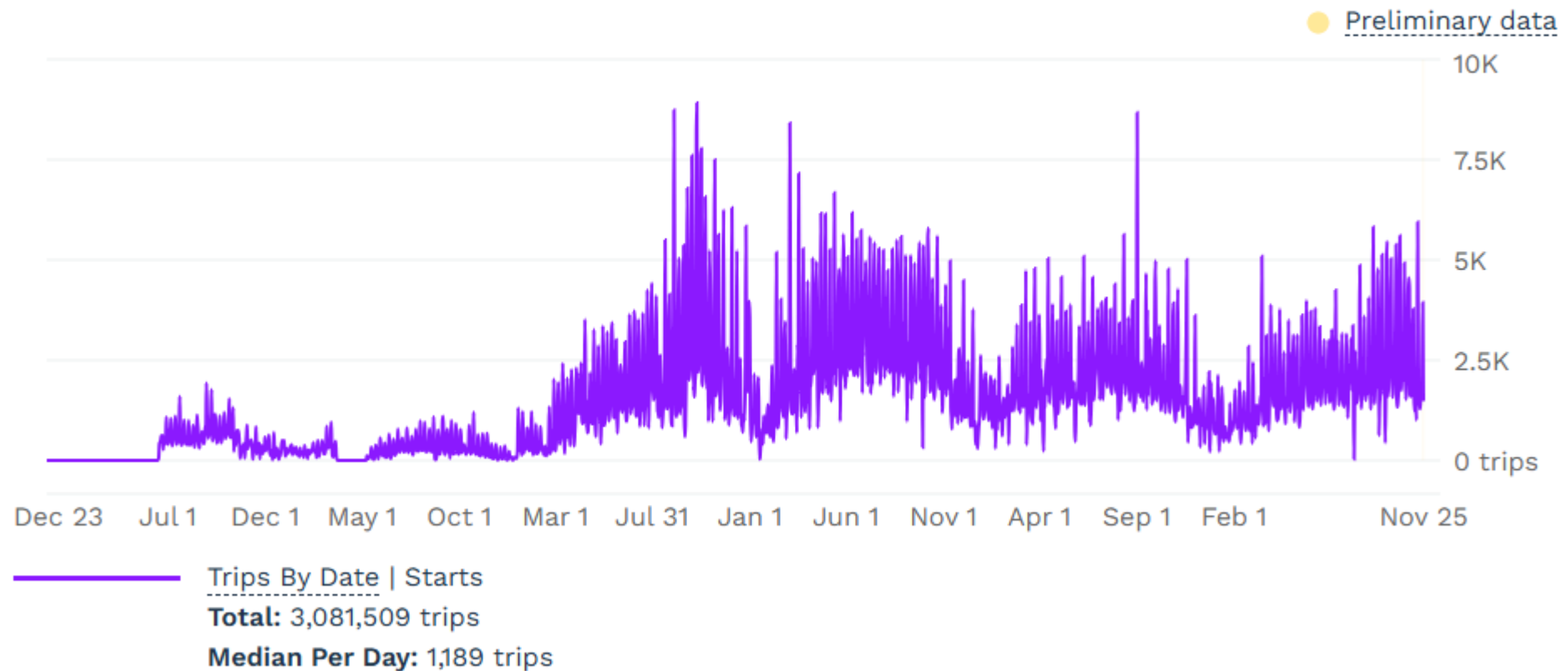
- ◀ **Shared Mobility in Charlotte**
- ◀ **Strategic Mobility Plan**
- ◀ **Evolution of Shared Mobility**
  - System operation
  - Parking
  - Equity
- ◀ **Future Input**

# Shared Mobility in Charlotte



# Over 3 million trips since 2018...

Trips By Date | Starts



# Strategic Mobility Plan

◀ **2040: 50% mode share aspiration**

◀ **Shared mobility**

- Convenient transportation option
- First/last mile connectivity to transit
- Sustainable mode choice

◀ **“...expand bike share in Charlotte”**

# Strategic Mobility Plan Engagement

- ◀ **19.7% of survey respondents either strongly agreed or agreed that they would like to travel more by e-scooter in Charlotte.**
- ◀ **64% of survey respondents either strongly agreed or agreed that they would like to travel more by bike in Charlotte.**

# Dockless Bike Share Strategy

## ◀ Evolution of Shared Mobility

- Privately operated, demand-driven system
- Expand bike share to new areas, reaching a broader population
  - *Equity policies + transit access*

## ◀ Capital + Infrastructure Requirements

- Inexpensive and flexible parking corrals
- Repurposed ROW and curbside management

## ◀ Expanded e-scooter program permit model

# Dockless E-Bikes



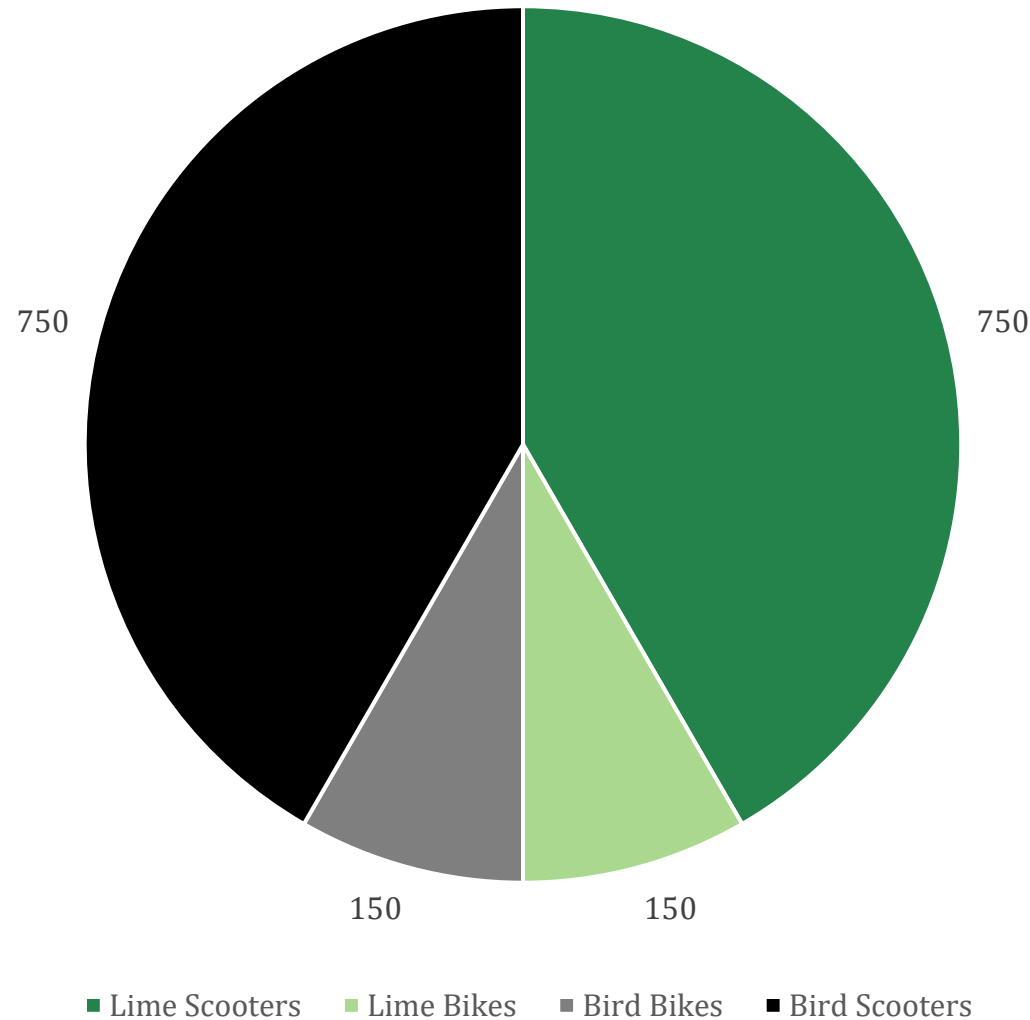
**Phased rollout ramping up January 2025**



# Permitted Devices by Operator

Bird and Lime are each permitted to operate **750 scooters** and **150 e-bikes**

Total Fleet Size: **1,500 scooters** and **300 e-bikes**



# Shared Mobility Parking Corral Goals

## ◀ **Right-of-Way Management**

- Intentional parking locations
- Clear pedestrian paths

## ◀ **Vision Zero**

- People walking, biking, and using shared mobility
- Traffic calming
- Sight distance – daylighting of crosswalks

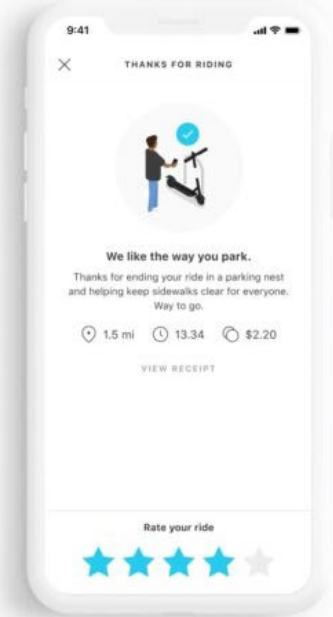
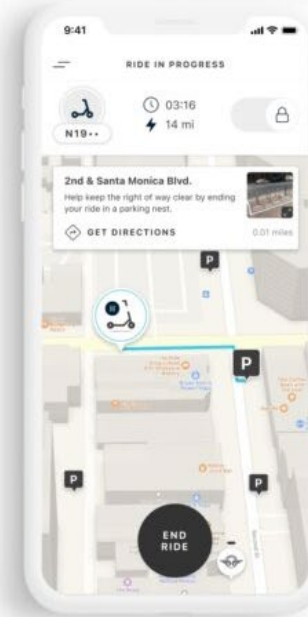
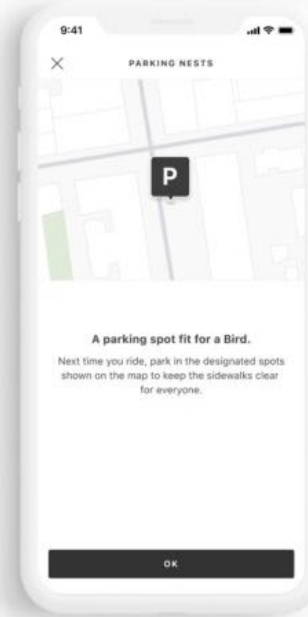
## ◀ **Curbside Management**

- (Motor vehicle) parking restrictions

# Shared Mobility Parking Corrals

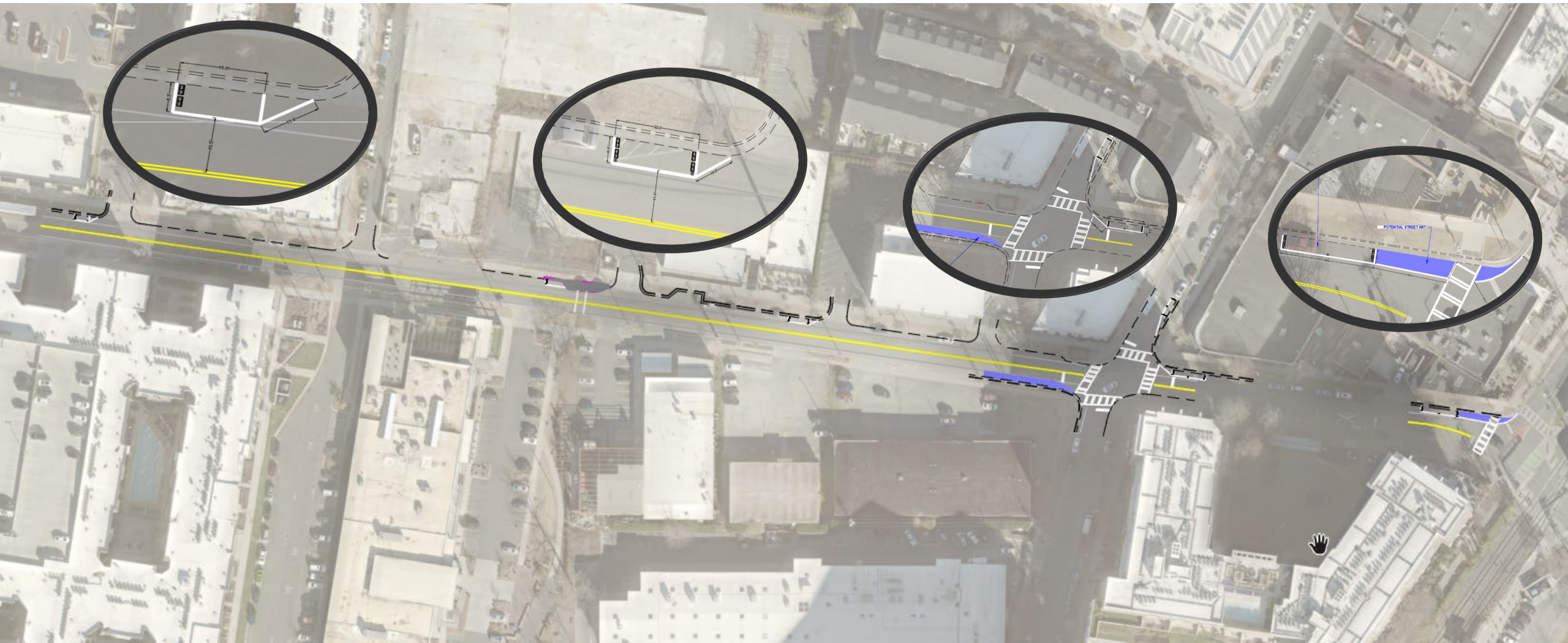








# Tremont Ave (Camden to Tryon)





# Tremont Ave Parking Corrals





# Equity Strategies

## ◀ **Grow the shared mobility program geography**

- Connect new neighborhoods and serve more trip purposes
- Work with operators to broaden deployment of e-bikes (and scooters)

## ◀ **Bird Access and Lime Access**

- Affordability program offering discounted rides for qualified riders

## ◀ **Collaborate with local organizations**

- Neighborhood and advocacy groups

## ◀ **Partner with CATS on mobility hubs and transit integration**

- First/last mile connection

# Extended Hours of Operation

## ◀ From 6:00am – 10:00pm to 5:00am – 1:30am

- More closely aligned with CATS transit service
- Transportation options for shift workers outside previous hours
- Many special events end after 10:00pm
- Similar to peer cities programs



# Future Input Opportunities

## ◀Community Engagement Plan

- Work with Bird and Lime to increase participation at community events
- Education and safety campaigns

## ◀Bicycle Advisory Committee Updates

- As the shared mobility program continues to evolve, updates and feedback opportunities with the BAC will be part of that strategy.

# Questions and Ideas?

