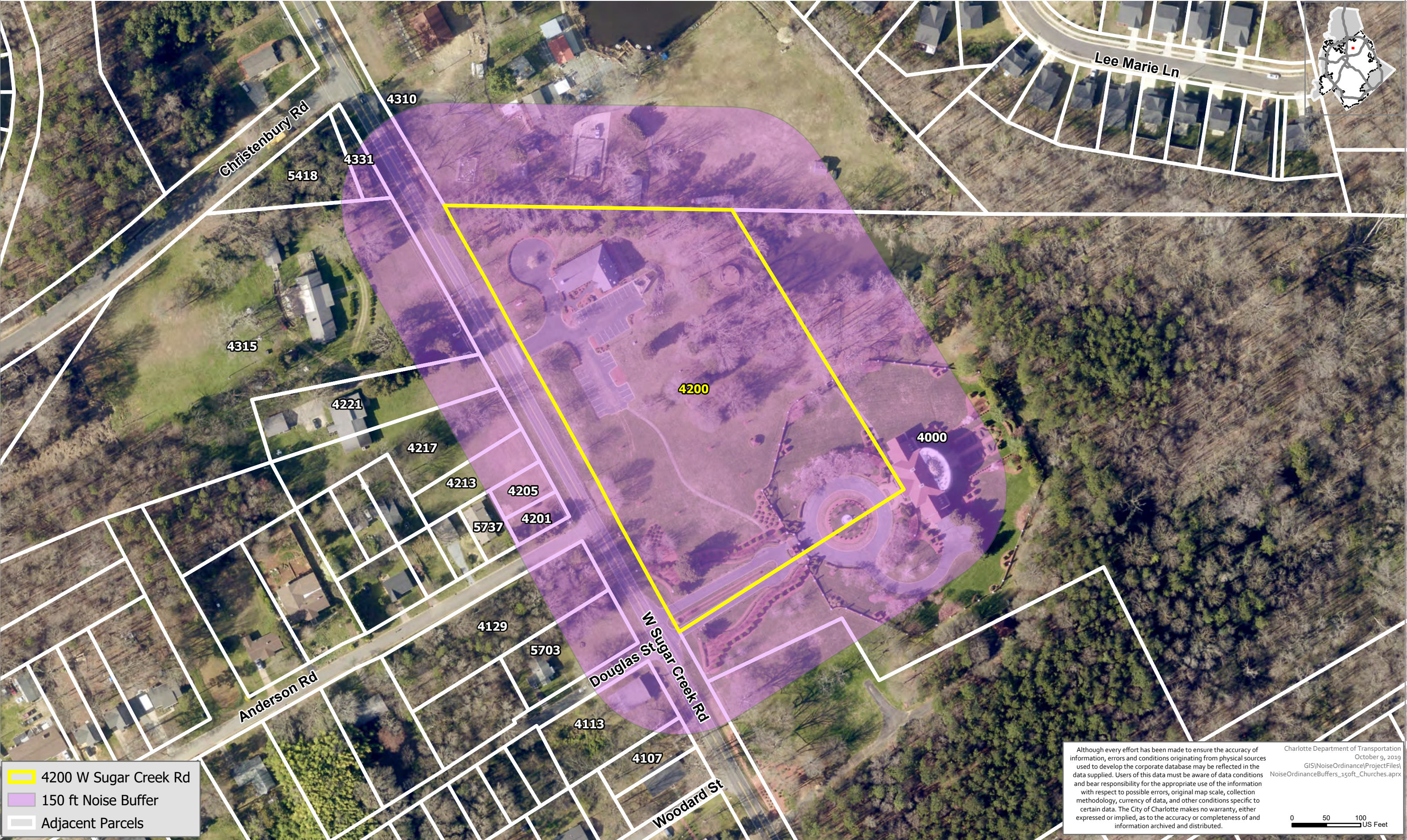
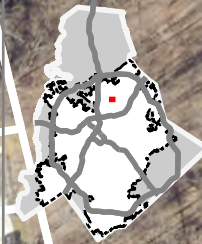




# 150 ft Buffer Around 4200 W Sugar Creek Rd



4200 W Sugar Creek Rd

150 ft Noise Buffer

Adjacent Parcels

Although every effort has been made to ensure the accuracy of information, errors and conditions originating from physical sources used to develop the corporate database may be reflected in the data supplied. Users of this data must be aware of data conditions and bear responsibility for the appropriate use of the information with respect to possible errors, original map scale, collection methodology, currency of data, and other conditions specific to certain data. The City of Charlotte makes no warranty, either expressed or implied, as to the accuracy or completeness of and information archived and distributed.

Charlotte Department of Transportation  
October 9, 2019  
GIS\NoiseOrdinance\ProjectFiles\NoiseOrdinanceBuffers\_150ft\_Churches.aprx

0

50

100

US Feet