

# How to **BIKE SMART** in Charlotte

////////////////////////////////////  
**At every age, whether you cycle for fun or to get where you are going, be sure to cycle safely.**

**Follow these tips inside to help you stay safe.**  
////////////////////////////////////

For more information, please visit us  
at <http://bike.charmeck.org>

or contact us below:

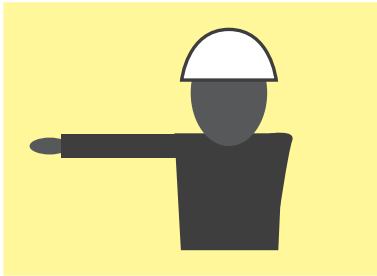


## KNOW THE LAW...

- Ride on the right side of the lane in the same direction as traffic.
- Observe all traffic signs and signals.
- Use hand signals before making a turn or stopping.
- Use lights and reflectors when riding at night or in low light.
- Cyclists under 16 years old are required to wear a helmet.

### How to use hand signals:

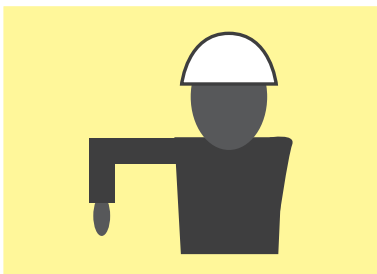
Use your left arm to signal.



Left Turn



Right Turn



Stop

## BE AWARE OF...

### The "Door Zone"



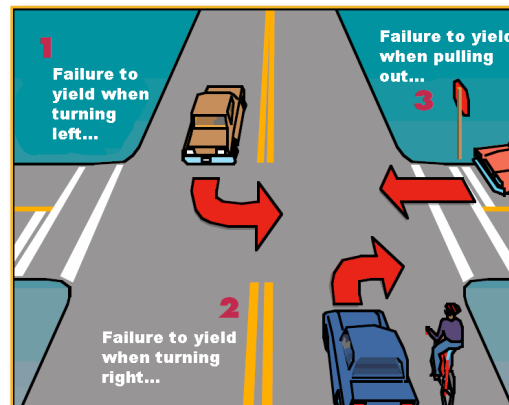
Be sure to leave enough space between you and a parked car.

### Hazards



Hazards include drainage grates, uneven or cracked pavement, broken glass, low hanging branches or other obstacles.

### Turning Vehicles



Watch and listen for vehicles making turns.

## FOR YOUR SAFETY...

- Ride in a straight line. Do not weave between parked vehicles.
- Wear a helmet.
- Lose the headphones. Your hearing keeps you aware of your surroundings and can help you detect overtaking vehicles.
- Keep your bike maintained. Check brakes and tighten any loose bolts, nuts or screws.
- Look for alternate routes using low traffic neighborhood streets.
- Ride defensively and predictably.
- Wear bright colored clothing to increase your visibility.



### Be Courteous

Keep traffic flowing by helping motorists pass safely.