



Honoring History & Culture Charlotte's West Side Neighborhoods

History and Culture - Then and Now

Connecting and Building on the Past

Overview of Neighborhoods along Key Corridors

W. Trade Street - Johnson C. Smith University and Biddleville

Historic Buildings and Community-wide Institutions and Services
Public Art as Integrated in Neighborhood Improvements

Rozzelles Ferry Road - Lakewood

Tuckaseegee Road - Seversville and Enderly Park

Freedom Drive - Camp Greene, Ashley Park and Wesley Heights

Questions for Participants

History and Continuity

1762 Mecklenburg County established

1769 Charlottetown incorporated

1867 Biddle Memorial Institute established

1923 Renamed Johnson C. Smith University

1871 Biddleville Neighborhood established

1884 Biddle Hall dedicated

1975 Placed on National Register of Historic Places

1891 Daniel Sanders Elected first African American President of Biddle Institute

1912 Carnegie Library constructed at Biddle Institute



History and Continuity

- 1885 Dr. George E. Davis – First African American Professor at Biddle Institute
- 2013 Home of Dr. Davis (1890) under restoration in Biddleville
Future Headquarters of Foster Village Network Center, serving JCSU students
- 2015 New STEM Science Center under construction on JCSU campus



History and Continuity

Educational and Cultural Institutions Expand Local Boundaries



2008 Dr. Ronald Carter, new President of JCSU. Leads future vision

2010 JCSU Arts Factory opens on W. Trade St. expanding into community, spurring development

2012 Mosaic Village Opens

\$25 million mixed-use redevelopment project: A Public – Private Partnership



History and Continuity

Educational and Cultural Institutions Expand Local Boundaries



2009 Harvey B. Gantt Center for African American Art + Culture
opens in Center City

History and Continuity

Public Art and Placemaking

2004 - Five Points – Biddleville



“Gather Together,” Tejuola Turner, Artist
Historic West End Garden
First Neighborhood Project in Charlotte



Tejuola Turner painting, above; Romare Bearden,
“The Blues, Mecklenburg,” The Mint Museum of Art

History and Continuity

Transportation Services & Choices



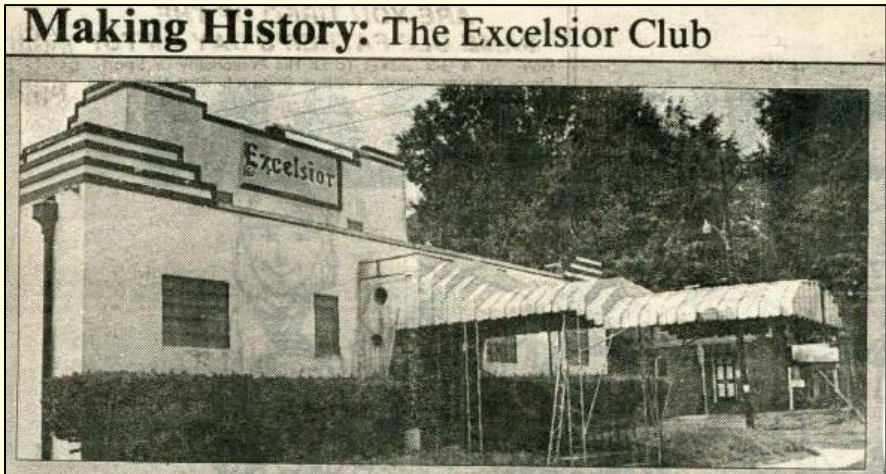
- 1891 First Electric Streetcars in Charlotte
- 1907 Streetcars reach Biddleville, connecting to downtown
- 2015 City considers funding design for new Streetcar line serving West End



History and Continuity

Institutions Serving Broader Community

- 1910 Constructed as a private residence
- 1944 Excelsior Club opened as a music & entertainment venue
- 1950's Renovated & continues as historic meeting place for political, social, fraternal & civic organizations



Owners of Excelsior Club:

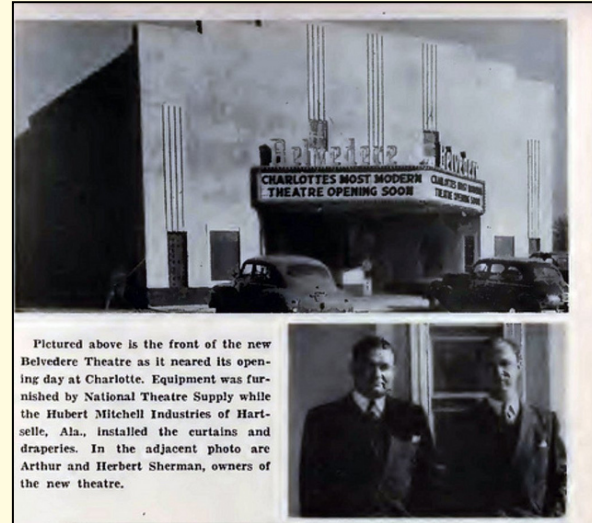
- James Robert McKee (1944-1985)
- Ken Kootz and Paul Hatchett (assumed ownership in 1985)
- Representative William Pete Cunningham (? to 2005)
- Attorney James Ferguson, Jr. (2005 to present)



History and Continuity

Institutions Serving Broader Community

- 1955 Belvedere Theatre built and opened for African Americans
- c.1996 Left vacant and fell into disrepair
- 2011 Full rehabilitation of the theatre building as part of the CMDC's Greenway Business Center Development. Became Belvedere Family Dentistry
- 2012 Wins Charlotte Preservation Award

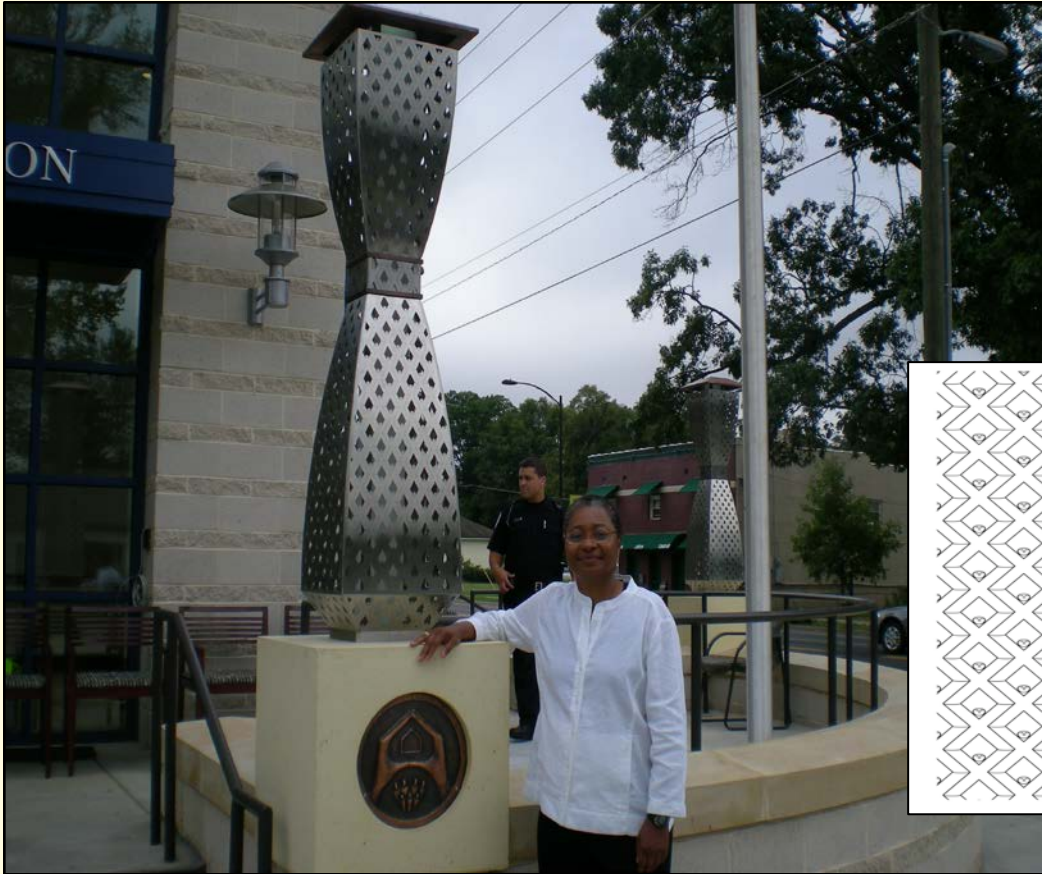


Pictured above is the front of the new Belvedere Theatre as it neared its opening day at Charlotte. Equipment was furnished by National Theatre Supply while the Hubert Mitchell Industries of Hartsville, Ala., installed the curtains and draperies. In the adjacent photo are Arthur and Herbert Sherman, owners of the new theatre.

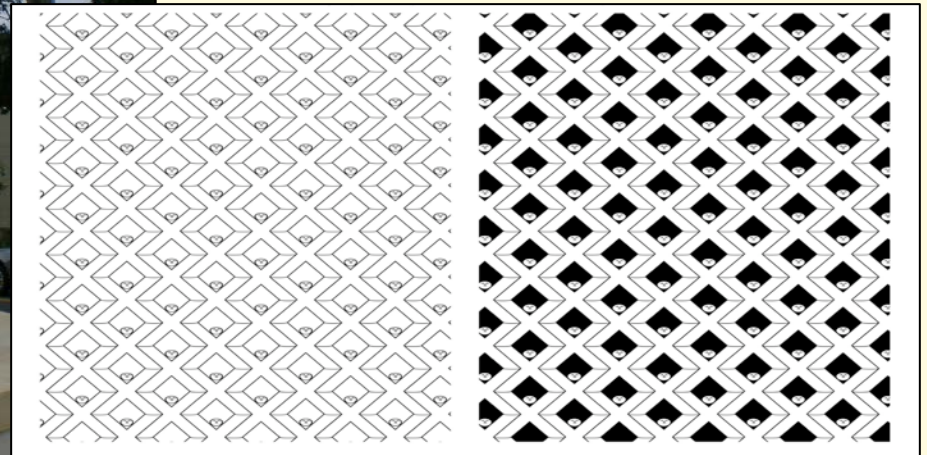


Public Art - Symbols of Community Values Enhancing Public Safety

2010 Beatties Ford Road Police Station
“Protect & Lift Up the People”



LED Station Entry Lanterns
Chandra Cox Studio, Artist



Pattern design by Chandra Cox

History and Continuity Rozzelles Ferry Road

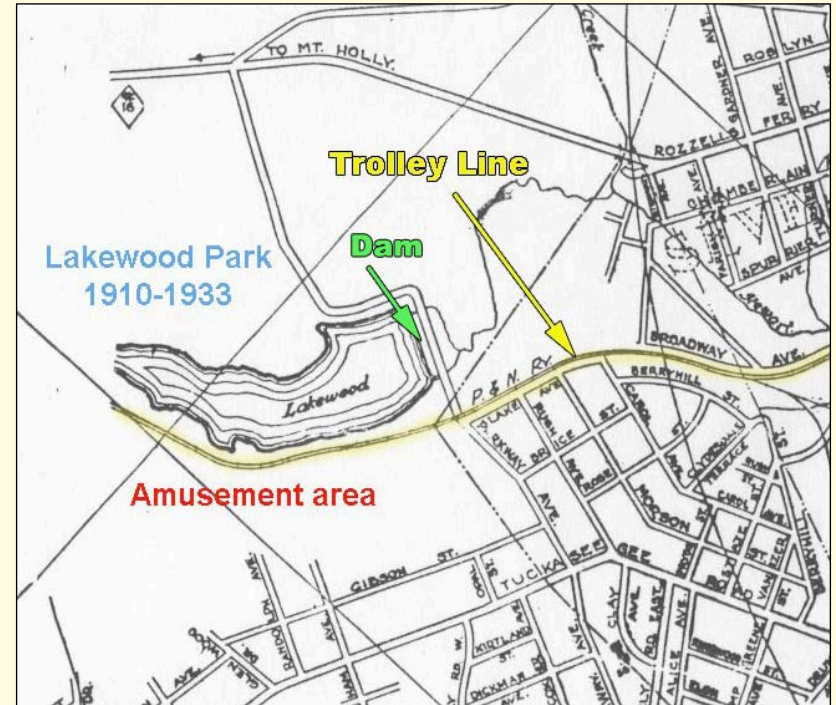
Before 1920's - Ferries used to cross the Catawba River

Rozzelles Ferry Bridge (L) and later bridges (R),
replaced by Highway 16 – Brookshire Freeway

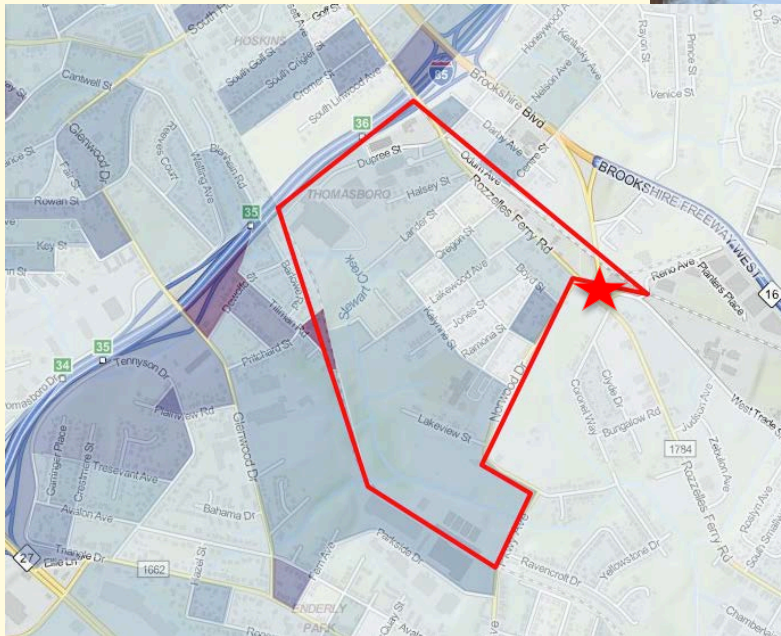


Rozzelles Ferry Road • Lakewood Neighborhood

1910 – 1933 Lakewood Amusement Park
built by Southern Power to cool electric transformers

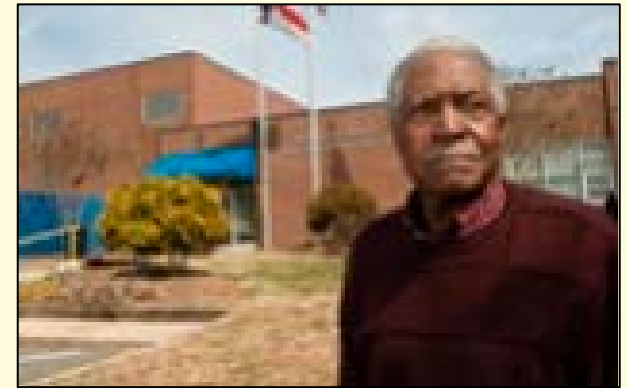


Rozzelles Ferry Road Lakewood Neighborhood 2010 Public Art Entry Sculpture



“Reflections of Community”
Jeff Hackney, Artist
Shadows reflect Neighborhood Streets

Tuckaseegee Road “The Tuck”
word of Cherokee origin, a river in western NC
Enderly Park and Seversville Neighborhoods



Bette Rae Thomas Recreation Center
Opened 2007 - Educational, Social and Recreational Programs

Wallace Pruitt Recreation Center
Dedicated 2009

Tuckaseegee Road “The Tuck”

word of Cherokee origin, a river in western NC

Enderly Park and Seversville Neighborhoods



Founded 2012-13
An Interactive Museum

Arts, Science, Music, Drama
Connecting to African-American
And African History

VISION:

To provide a place where an individual can experience the life and times in Black American history through the museum's exhibits, installations, and interactive educational programs.



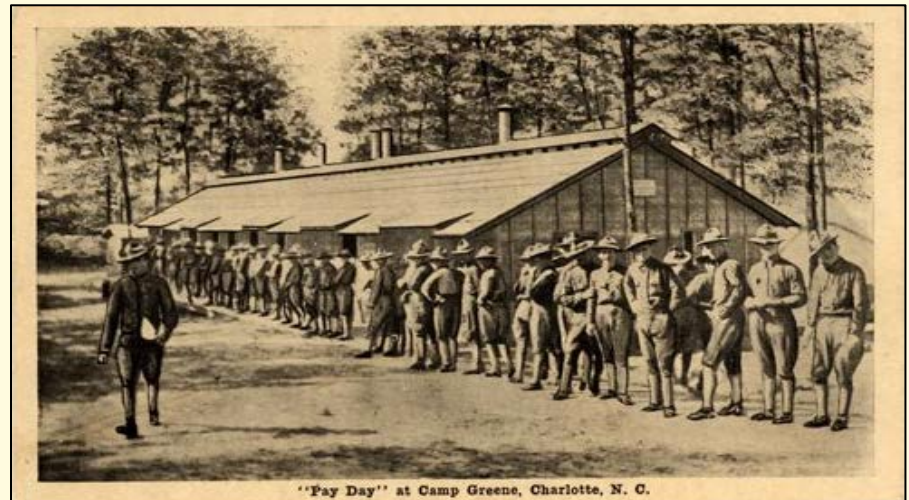
Freedom Drive and Tuckaseegee Road

1917- 1919 Camp Greene established as a WWI Training Camp

- 2,400 acres, extending from Wilkinson Blvd. – Freedom Drive to Tuckaseegee
- 60,000 soldiers at its peak, with Charlotte's population at 30,000
- The Dowd House (1879) served as headquarters (all that remains)
- Transformed the economy of Charlotte (lifted Charlotte out of Great Depression.)
- Camp Greene St, neighborhood, park and schools remain today.



Administration Building – www.cmstory.org



Freedom Drive and Tuckaseegee Road

1920s Charlotte's first airfield, Cannon Field, opened near Freedom Drive and Ashley St.

- Built on the remnants of Camp Greene's airfields
- Served as Charlotte's main airport in 1920s, 1930s, and 1940s
- 3 runways and 4 hangars
- Used on weekends and later for mail service
- Inadequate for airlines due to gravel runways, lack of land for expansion, etc.
- Remained intact, but deteriorated in parts until the construction of Freedom Mall in 1978



1931 - City officials with Amelia Earhart (aviation pioneer) on her visit to Cannon Airport

Freedom Drive - New Places, New Identities, Honoring the Past

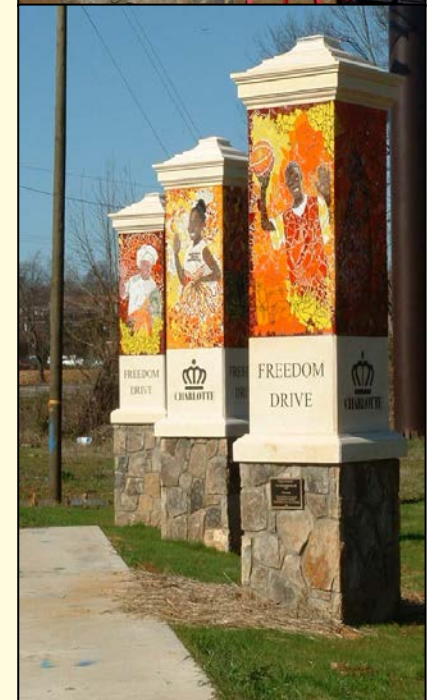
2010 Public Art Garden and Plaza integrated at Freedom Mall



“Tuckaseegee 12” Public Garden and Plaza
Laurel Holtzapple, Artist /Landscape Architect
Freedom Mall – Woodard Social Services Center
Freedom Drive at Ashley St.

Freedom Drive - New Places, New Identities

2007 Wesley Heights Neighborhood



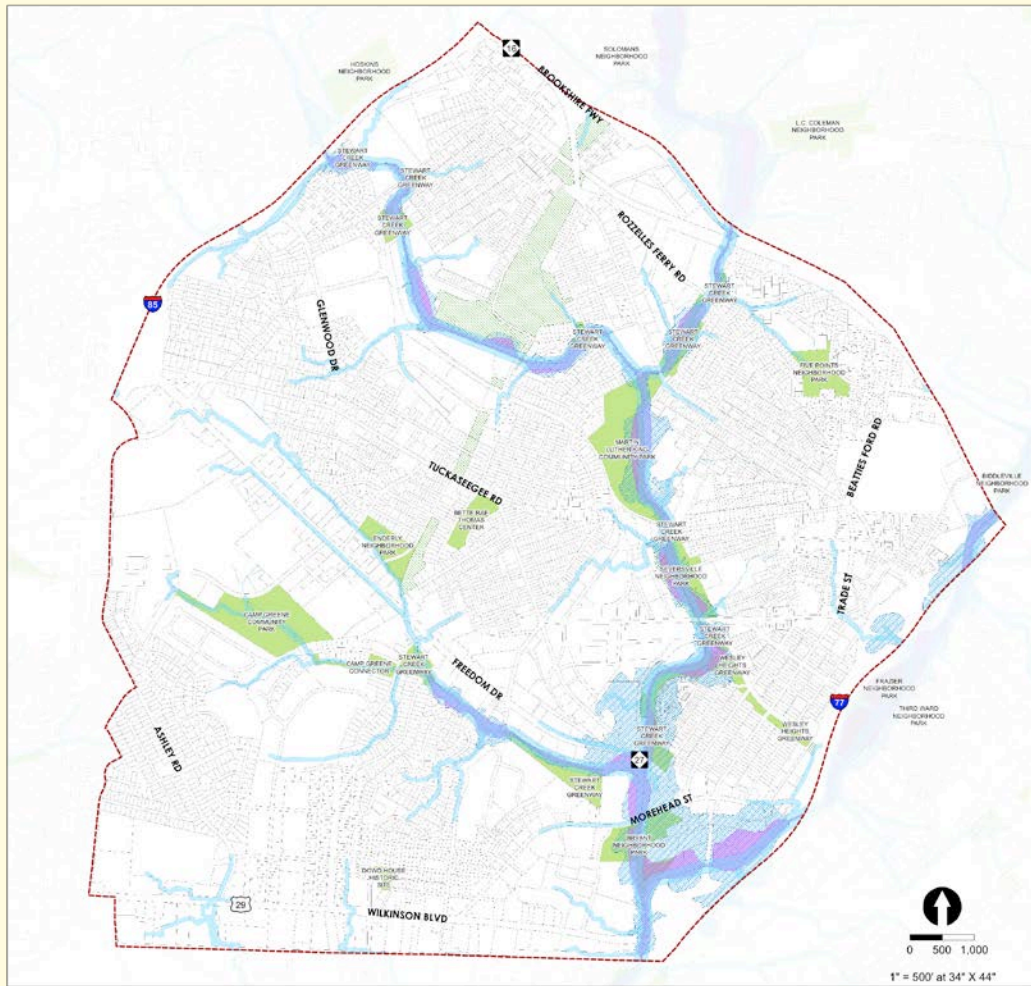
“Faces of Freedom” Portrait Mosaic Columns & Street Markers
Cheryl Foster, Artist. Ashley to Morehead Sts. along Freedom Drive

Questions for Participants

- **Do you know the History of your Street and your Neighborhood ?**
- **What is One Thing that You Believe has Made a Positive Difference to Your Neighborhood ?**
- **Where do you participate in Community Activities?**
- **What are your Symbols of Place and Why ?**

Comprehensive Neighborhood Improvement Program (CNIP)

West Trade/Rozzelles Ferry Road Neighborhood



Environmental Features

- Study Area Boundary
- Streams
- SWIM Buffer
- Floodplain Encroachment Area
- Duke Power Company Easement
- Community Floodplain Area
- Park Property
- Parcels

Natural Features & Connections

- Where is your special place to go that has positive memories, or where do you find rest ?
- Where do you go to recharge ?
- Are these places convenient and safe ?