

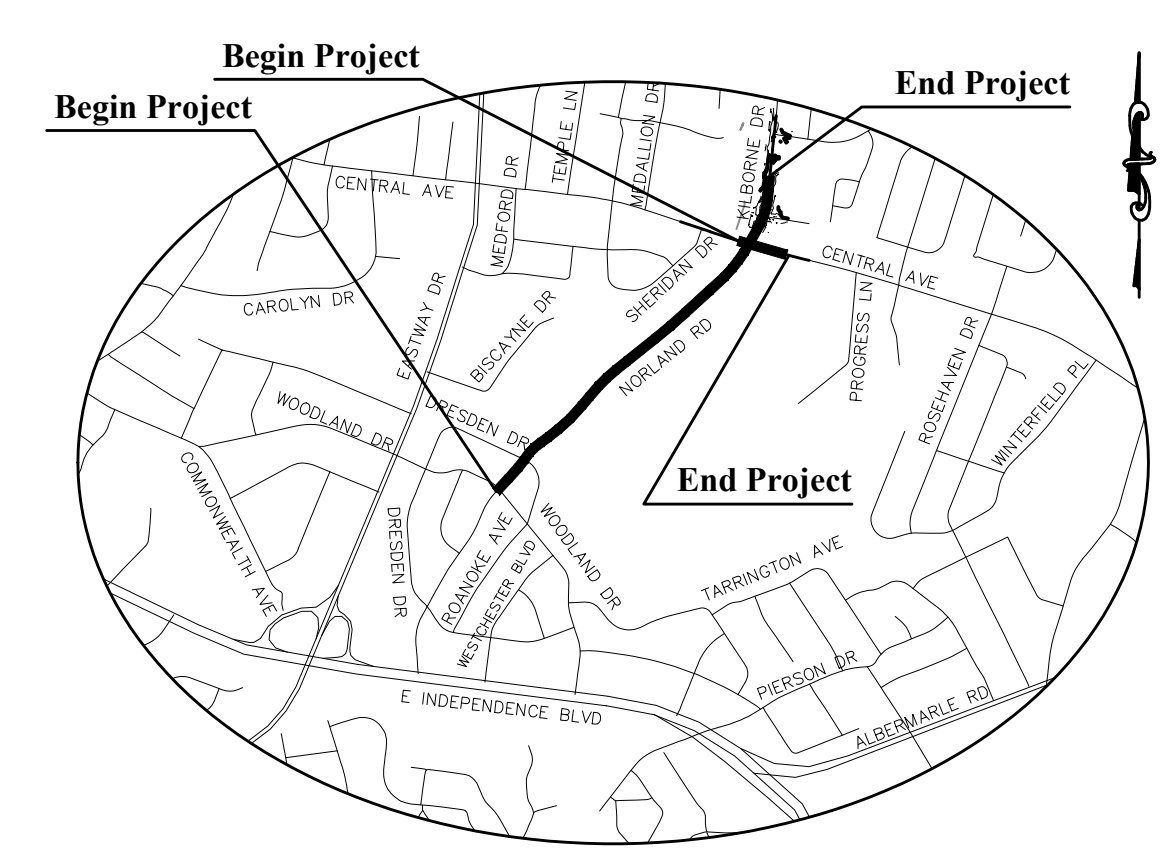
INDEX OF SHEETS	
Title Sheet.....	1
General Notes.....	2A
Typical Sections.....	2B-2D
Plan.....	4-12
Cross-Sections.....	XS1
TOTAL SHEETS <b>15</b>	

**PRELIMINARY PLANS**  
DO NOT USE FOR CONSTRUCTION

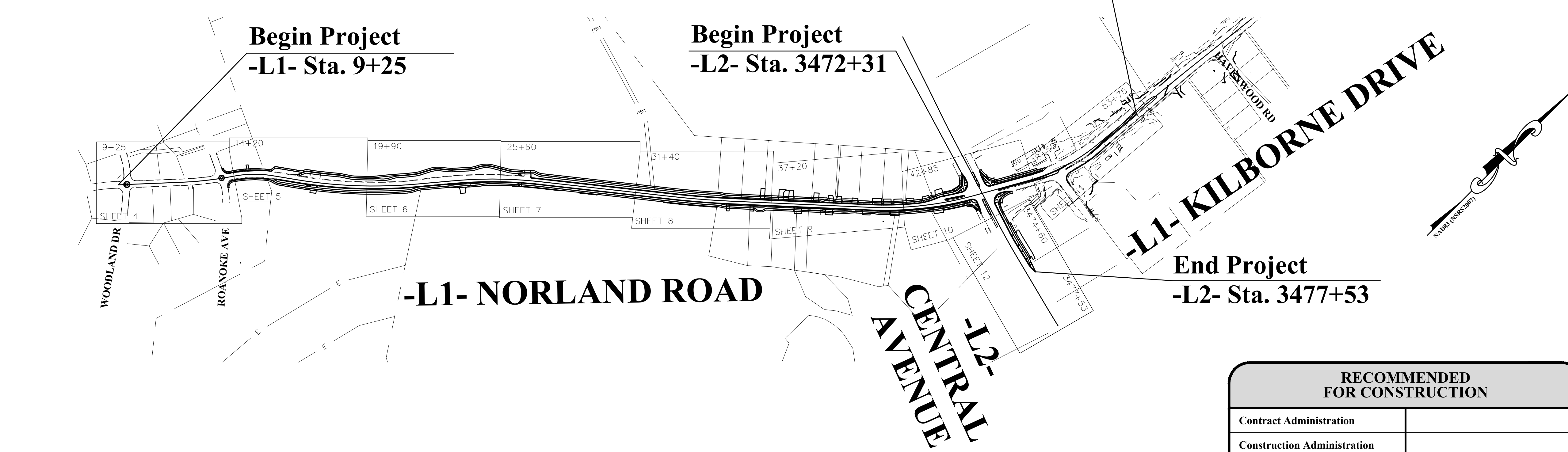


**Construction Plans of Proposed**  
**Central / Kilborne / Norland Pedestrian Improvements**  
**Project No. 2017000162**

- Project Features:**
- Sidewalks / Ramps
  - Bicycle Paths
  - Bicycle Lanes
  - Curb and Gutter
  - Pavement Markings and Signage
  - Grading, Storm Drainage



**VICINITY MAP**  
NTS



**LOCATION MAP**  
NTS

**PROJECT LENGTH = 0.9 MILES**

2018 STANDARD SPECIFICATIONS

PE SEAL

Record Drawings

CONVENTIONAL SIGNS	
Proposed Property Line .....	— ROW — — — —
Existing Property Line .....	— — — — —
Maintained as R/W Line .....	— R/W — — — —
Existing Structures .....	— — — — —
Railroad Tracks .....	— — — — —
Proposed Edge of Pavement .....	— — — — —
Fence .....	— — — — —
Slope Stake Line .....	— C — F —
Temporary Construction Easement .....	— e — e —
Sidewalk/Utility Easement .....	— SUE — SUE —
Storm Drainage Easement .....	— SDE — SDE —
Existing Gas Line .....	— G — G —
Existing Water Line .....	— W — W —
Existing Sanitary Sewer .....	— SS — SS —
Existing Underground Telecommunications .....	— UT — UT —
Existing Underground Electric .....	— UE — UE —
Existing Storm Drainage .....	— — — — —
Proposed Storm Drainage .....	— — — — —
Existing Tree .....	⊙
Existing Water Meter .....	⊙
Existing Water Valve .....	⊙
Existing Gas Valve .....	⊙
Existing Sanitary Sewer Manhole .....	⊙
Proposed Sanitary Sewer Manhole .....	⊙
Existing Storm Drain Manhole .....	⊙
Proposed Storm Drain Manhole .....	⊙
Existing Telephone Manhole .....	⊙
Proposed Telephone Manhole .....	⊙
Existing Electric Manhole .....	⊙
Proposed Electric Manhole .....	⊙
Existing Catch Basin .....	⊙
Proposed Catch Basin .....	⊙
Existing Light Pole .....	⊙
Proposed Light Pole .....	⊙
Existing Utility Pole .....	⊙
Guy Wire .....	⊙
Proposed Utility Pole .....	⊙
Iron Pin .....	⊙
Existing Fire Hydrant .....	⊙
Proposed Fire Hydrant .....	⊙
Existing Drop Inlet.....	⊙
Proposed Drop Inlet.....	⊙
Accessible Ramp .....	⊙
Tree Protection .....	⊙
Proposed Guardrail .....	⊙
Silt Fence .....	⊙
Proposed Curb & Gutter, Conc. Drive, Sidewalk .....	⊙
Proposed Asphalt Pavement .....	⊙
Proposed Rip Rap Ditch .....	⊙
Proposed Gravel .....	⊙
Proposed Pavement Removal .....	⊙
Proposed Sidewalk Bridging Tree Roots .....	⊙
Asphalt Milling .....	⊙

RECOMMENDED FOR CONSTRUCTION	
Contract Administration	
Construction Administration	
Landscape Management	
Engineering Services	
Utility Coordinator	
CDOT - Design	
CDOT - Implementation	
CLTWater	
Planning	
Storm Water Services	

**PLANS PREPARED BY:**

111 EAST CHAPEL HILL ST.  
SUITE 100  
DURHAM, NC 27701  
P: 919-484-8448  
WWW.ALTAPlanning.COM  
NC LICENSE #P-1301

**FOR CHARLOTTE**  
CITY OF CHARLOTTE  
ENGINEERING & PROPERTY MANAGEMENT  
PLANNING & DESIGN GROUP

**Bid Set No.** \_\_\_\_\_

**APPROVED** \_\_\_\_\_  
CITY ENGINEER      DATE

Project Name: Project Number: 2017000162



**GENERAL NOTES**

**PROPOSED CURB ELEVATIONS:**

THE CONTRACTOR SHALL SET AND ADJUST PROPOSED CURB ELEVATIONS AS NECESSARY TO ENSURE PROPER LONGITUDINAL GRADE FOR DRAINAGE. THE CONTRACTOR SHALL RETAIN EXISTING PAVEMENT, UNLESS OTHERWISE NOTED.

**DRIVEWAYS AND SIDEWALKS:**

PROPOSED DRIVEWAY ENTRANCE DIMENSIONS ARE FROM EXPANSION JOINT TO EXPANSION JOINT. MATCH REPLACEMENT MATERIALS TO THE EXISTING SURFACE ACCORDINGLY:

- CONCRETE – SIX INCH PORTLAND CEMENT CONCRETE (3600 PSI).
- ASPHALT – (COMMERCIAL) TWO INCH SF9.5B COURSE AND FOUR INCH I19.0B INTERMEDIATE COURSE.
- ASPHALT – (RESIDENTIAL) TWO INCH SF9.5B COURSE AND FOUR INCH AGGREGATE BASE (ABC) COURSE.
- GRAVEL – SIX INCH INCIDENTAL STONE

SIDEWALK SHALL BE FOUR INCHES THICK, AND SIX INCHES THICK AT DRIVEWAY CROSSINGS, PER CITY STD. NO. 10.22.

**DRAINAGE STRUCTURES:**

GRADES, ELEVATIONS AND LOCATIONS SHOWN ARE APPROXIMATE. AS DIRECTED BY THE ENGINEER, THEY MAY BE ADJUSTED TO ACCOMMODATE UNFORESEEN CONDITIONS. STATIONS, OFFSETS AND ELEVATIONS REFER TO THE CENTER OF DROP INLETS, MANHOLES AND JUNCTION BOXES, AND THE MIDPOINT OF THE LIP FOR CATCH BASINS. ALL PIPES SHALL BE RCP CLASS III UNLESS OTHERWISE NOTED.

WEEPHOLES ARE TO BE CONSTRUCTED IN ALL DRAINAGE STRUCTURES, A MINIMUM OF 1 WEEPHOLE PER STRUCTURE. WEEPHOLES ARE TO BE CONSTRUCTED IN THE BOTTOM 1/3 OF STRUCTURE AND COVERED ON THE OUTSIDE OF THE STRUCTURE BY A BAG MADE OF FILTER FABRIC AND FILLED W/#78 STONE. THERE WILL BE NO SEPARATE PAYMENT FOR THIS WORK.

**UTILITIES:**

UTILITIES ARE ILLUSTRATED FOR INFORMATION PURPOSES ONLY. THE CITY WILL NOT BE HELD RESPONSIBLE FOR THE ACCURACY OF UTILITY LOCATIONS, SIZES, DEPTHS, OR FOR COMPLETENESS OF UTILITY INFORMATION.

PRIOR TO CONSTRUCTION AND VIA THE CITY UTILITY COORDINATOR AND CITY INSPECTOR, THE CONTRACTOR SHALL NOTIFY AND MEET WITH ALL UTILITIES AFFECTED TO DETERMINE UTILITY LOCATIONS. THE CONTRACTOR SHALL PROTECT ALL UTILITIES FROM DAMAGE CAUSED BY HIS OPERATIONS OR THOSE OF HIS AGENTS. THE CONTRACTOR SHALL HOLD THE CITY HARMLESS FOR ANY THIRD-PARTY INCONVENIENCE CREATED BY WORK OF HIS OWN FORCES OR THAT OF HIS AGENTS. ANY DAMAGES INCURRED SHALL BE THE CONTRACTORS FINANCIAL RESPONSIBILITY.

AS NEEDED, THE CONTRACTOR SHALL ADJUST/RELOCATE THE SANITARY SEWER AND WATER LINES ONLY. ALL OTHER ADJUSTMENTS/RELOCATIONS WILL BE PERFORMED BY THE VARIOUS UTILITY OWNERS. VIA THE CITY UTILITY COORDINATOR AND CITY INSPECTOR, THE CONTRACTOR SHALL COORDINATE WORK WITH UTILITY OWNERS SO AS NOT TO ADVERSELY AFFECT THE PROJECT SCHEDULE. THE CITY WILL NOT BE HELD RESPONSIBLE FOR ANY DELAYS OR DISRUPTIONS TO THE WORK SCHEDULE OF OTHER UTILITY OWNERS. THE CONTRACTOR SHALL STAY A MINIMUM OF 5 FEET AWAY FROM ALL UTILITY POLES.

- FOR UTILITY LOCATES CALL NORTH CAROLINA ONE--CALL @ 1-800-632-4949.
- WARNING: OVERHEAD UTILITIES. UNLESS OTHERWISE NOTED FOR RELOCATION, THE CONTRACTOR IS TO WORK UNDER ALL EXISTING OVERHEAD UTILITIES.

THE CONTRACTOR SHALL ADJUST ALL WATER VALVES, WATER METER BOXES AND WATER VAULTS TO FINISHED GRADE. WATER METERS LOCATED IN SIDEWALKS OR CONCRETE DRIVEWAYS SHALL BE INSTALLED WITHIN CONCRETE BOXES.

GAS LINES WILL BE ADJUSTED/RELOCATED AS NEEDED BY PIEDMONT NATURAL GAS. VIA THE CITY UTILITY COORDINATOR AND CITY INSPECTOR, THE CONTRACTOR SHALL CONTACT PIEDMONT NATURAL GAS AT LEAST TWO WEEKS PRIOR TO CONSTRUCTION.

**EXISTING SANITARY SEWER AND WATER LINE:**

THE CONTRACTOR SHALL USE CARE WHEN WORKING AROUND SANITARY SEWERS AND WATER LINES. SHOULD THE CONTRACTOR DAMAGE EXISTING SEWER OR WATER LINES, HE SHALL IMMEDIATELY REPLACE THE LINE AT HIS EXPENSE WITH DUCTILE IRON PIPE. THE CONTRACTOR SHALL REPLACE SANITARY SEWER AND/OR WATER LINE, WITH A MINIMUM TEN FOOT SECTION OF DUCTILE IRON PIPE WHEN DRAINAGE PIPE COMES WITHIN TWO FEET OF SAID LINES, VERTICALLY OR HORIZONTALLY.

**SUBSURFACE PLANS:**

NO SUBSURFACE PLANS ARE AVAILABLE ON THIS PROJECT. THE CONTRACTOR MAY MAKE HIS OWN INVESTIGATION TO DETERMINE SUBSURFACE CONDITIONS.

**MAIL BOXES:**

THE CONTRACTOR SHALL RELOCATE ALL MAIL BOXES AS REQUIRED BY SECTION 107-11 OF THE NCDOT STANDARD SPECIFICATIONS FOR ROADS AND STRUCTURES. COORDINATE THIS WORK WITH THE U.S. POSTAL SERVICE.

**FENCES:**

THE CONTRACTOR SHALL REMOVE AND RESET FENCES AS NOTED ON THE PLANS AND/OR AS DIRECTED BY THE ENGINEER.

**TREES, SHRUBS, AND HEDGES:**

THE CONTRACTOR IS REQUIRED TO REMOVE TREES, SHRUBS, AND HEDGES WITHIN THE EASEMENT LINES UNLESS SHOWN ON THE PLANS TO BE PROTECTED. WHEN ROOT PRUNING IS NECESSARY, CUT ROOTS CLEANLY USING A DISC TRENCHER IN ACCORDANCE WITH SECTION 01000 OF THE CITY OF CHARLOTTE LANDSCAPE CONSTRUCTION STANDARDS. PRUNING SHALL BE PER THE LATEST STANDARD OF THE LANDSCAPE CONSTRUCTION STANDARDS MANUAL (TYP.) USE PLYWOOD FORMS WHEN TREE ROOTS ARE ADJACENT TO PROPOSED CURB & GUTTER OR SIDEWALK. USE CLD STD. 40.11 FOR BRIDGING TREE ROOTS. TREES SPECIFIED BY THE PLANS TO HAVE ASPHALT CURBING MUST USE CLD STD. 40.13. TREE PROTECTION SHALL BE IN ACCORDANCE WITH CLD STD. 40.02. WHEN THE TREE IS CLOSE TO THE WORK AREA TREE PROTECTION CLD STD. 40.12 SHALL BE USED.

**SIDE SLOPES:**

LIMITS OF PROPOSED SLOPES ARE INDICATED IN THE PLANS, DETAILS AND STANDARD DRAWINGS. THE MAXIMUM SLOPE SHALL NOT EXCEED A 3:1 (HORIZONTAL TO VERTICAL) UNLESS DESIGNATED BY THE ENGINEER. A CUT SLOPE OF 2:1 MAXIMUM WILL BE USED ONLY AS DIRECTED BY THE ENGINEER.

**GENERAL NOTES**

**EROSION CONTROL:**

THE CONTRACTOR SHALL MAINTAIN EROSION CONTROL DEVICES IN ACCORDANCE WITH THE APPROPRIATE CITY AND STATE EROSION AND SEDIMENT CONTROL ORDINANCES. THE CONTRACTOR SHALL PREVENT STANDING WATER DUE TO CONSTRUCTION. DISTURBED AREAS SHALL BE SEEDED AND MULCHED AT THE DIRECTION OF THE ENGINEER. THE CONTRACTOR SHALL FOLLOW THE EROSION CONTROL MEASURES SHOWN ON SHEETS.....

**ACCESSIBLE RAMPS AND DEPRESSED CURB:**

THE CONTRACTOR SHALL CONSTRUCT 6-INCH THICK CONCRETE ACCESSIBLE CURB RAMPS AT INTERSECTIONS IN ACCORDANCE WITH THE LATEST REVISIONS FOR ACCESSIBLE CURB RAMPS DETAILS, "PROPOSED ACCESSIBILITY GUIDELINES FOR PEDESTRIAN FACILITIES IN THE PUBLIC RIGHT-OF-WAY" (PROWAG), CONSTRUCTION PLANS & NCDOT STANDARD DRAWINGS.

**SAWCUTS:**

THE CONTRACTOR SHALL SAWCUT EXISTING ASPHALT AND/OR CONCRETE SURFACES PRIOR TO REMOVAL UNLESS OTHERWISE DIRECTED BY THE ENGINEER. SAW CUT WIDTH SHALL BE 1 FOOT MINIMUM FROM THE EXISTING EDGE OF PAVEMENT. SAW CUT PAVEMENT SHALL BE REPLACED AS WELL AS ADDITIONAL PAVEMENT REQUIRED TO TIE-IN TO FACE OF PROPOSED CURB AND GUTTER.

**PAVEMENT DEGRADATION FEE:**

CDOT HAS DETERMINED THAT NO PAVEMENT DEGRADATION FEE IS TO BE ASSESSED. CDOT AND E&PM HAVE AGREED ON THE STREET CUTS FOR WHICH A PAVEMENT DEGRADATION FEE IS REQUIRED. THE DEGRADATION FEE ASSESSMENT SHALL BE PAID VIA INTERNAL CITY MECHANISMS (DTI) PRIOR TO CONSTRUCTION.

**TRAFFIC CONTROL:**

TRAFFIC CONTROL SHALL BE IN ACCORDANCE WITH THE MOST CURRENT EDITION OF THE "WORK AREA TRAFFIC CONTROL HANDBOOK" (WATCH) AND THE TRAFFIC CONTROL PLANS ON SHEETS....

**STANDARDS**

THE FOLLOWING STANDARDS AND THE LATEST REVISION THERETO ARE APPLICABLE TO THIS PROJECT AND BY REFERENCE ARE CONSIDERED A PART OF THESE PLANS. NCDOT STANDARDS SHALL BE USED. CHARLOTTE LAND DEVELOPMENT STANDARDS MAY BE USED IF THERE IS NOT AN APPLICABLE NCDOT STANDARD.

**NCDOT:**

STD. NO.:	TITLE:
852.01.....	CONCRETE ISLANDS
1205.08.....	PAVEMENT MARKINGS SYMBOLS AND WORD MESSAGES

**CHARLOTTE:**

STD. NO.:	TITLE:
10.17A.....	STANDARD CURB AND GUTTER
10.17B.....	CURB AND GUTTER
10.18.....	18" VERTICAL CURB
10.19.....	CURB TRANSITION
10.22.....	CONCRETE SIDEWALKS
10.24A.....	COMMERCIAL TYPE II AND RESIDENTIAL TYPE I DROP CURB DRIVEWAY WITH SIDEWALK ABUTTING CURB (2'-6" CURB AND GUTTER)
10.25A.....	RESIDENTIAL DROP CURB TYPE I DRIVEWAY WITH PLANTING STRIP (2'-6" CURB AND GUTTER)
10.25B.....	COMMERCIAL DROP CURB TYPE II DRIVEWAY WITH PLANTING STRIP (2'-6" CURB AND GUTTER)
10.25E.....	TYPE II--MODIFIED DRIVEWAY DETAIL WITH WIDE PLANTING STRIP AND STANDARD CURB
10.27A.....	RESIDENTIAL DRIVEWAY (TYPE I) FOR 2'-0" VALLEY GUTTER
10.27B.....	COMMERCIAL TYPE II DRIVEWAY FOR 2'-0" VALLEY GUTTER
10.31A.....	PERPENDICULAR CURB RAMP WITH 2'-6" CURB AND GUTTER
10.31B.....	PERPENDICULAR CURB RAMP WITH 2'-6" CURB AND GUTTER
10.40A.....	DIRECTIONAL CURB RAMP WITH SMALL/MEDIUM CURB RADII

**ABBREVIATIONS**

ABAND.....	ABANDONED	NTS.....	NOT TO SCALE
A.D.....	ALGEBRAIC DIFFERENCE	O/H.....	OVER HEAD
ASPH.....	ASPHALT	OC.....	ON CENTER
APPROX.....	APPROXIMATELY	PAVT.....	PAVEMENT
B/C.....	BACK OF CURB	PC.....	POINT OF CURVATURE
BIT.....	BITUMINOUS	PERM.....	PERMANENT
BM.....	BENCH MARK	PG.....	PAGE
BRG.....	BEARING	PI.....	POINT OF INT
CB.....	CATCH BASIN	PK.....	PK NAIL SET
C&G.....	CURB AND GUTTER	PP.....	POWER POLE
CL.....	CLEARANCE	PROP.....	PROPOSED
C/L FENCE.....	CHAIN LINK FENCE	PSE.....	PERM SW ESMT
CMP.....	CORRUGATED MTL PIPE	PT.....	POINT OF TANGENCY
CONC.....	CONCRETE	PVI.....	POINT OF VERT INT
CONST.....	CONSTRUCTION	PUE.....	PERM UTILITY ESMT
DB.....	DEED BOOK	R.....	RADIUS
DCB.....	DOUBLE CB	RT.....	RIGHT
DI.....	DROP INLET	RCP.....	REINFORCED CONC PIPE
DIA.....	DIAMETER	RELOC.....	RELOCATE
DW.....	DRIVEWAY	R/W.....	RIGHT OF WAY
DIM.....	DIMENSION	S.....	SOUTH
E.....	EAST/EASTING	SD.....	STORM DRAIN
EA.....	EACH	SF.....	SQUARE FOOT
ELEV.....	ELEVATION	S/R FENCE.....	SPLIT RAIL FENCE
EOP.....	EDGE OF PAVEMENT	SS.....	SANITARY SEWER
ESTA.....	EASEMENT	STA.....	STATION
EXIST.....	EXISTING	STD.....	STANDARD
F/C.....	FACE OF CURB	SW.....	SIDEWALK
FES.....	FLARED END SECTION	TAN.....	TANGENT
FH.....	FIRE HYDRANT	TCE.....	TEMP CONST ESMT
FOC.....	FIBER OPTIC CABLE	TEMP.....	TEMPORARY
GV.....	GAS VALVE	TP.....	TRAVERSE POINT
HORIZ.....	HORIZONTAL	T/W.....	TEST WIRE
INT.....	INTERSECTION	TYP.....	TYPICAL
INV.....	INVERT	U/G.....	UNDER GROUND
IP.....	IRON PIN SET	VC.....	VERTICAL CURVE
L.....	LENGTH	VERT.....	VERTICAL
LF.....	LINEAR FOOTAGE	W.....	WEST
LT.....	LEFT	W/.....	WITH
Lb.....	POUND	WM.....	WATER METER
LP.....	LIGHT POLE	W VAULT.....	WATER VAULT
MAX.....	MAXIMUM	WV.....	WATER VALVE
MIN.....	MINIMUM	60p.....	SIXTY PENNY NAIL SET
MONO.....	MONOLITHIC	'.....	FOOT
mph.....	MILES PER HOUR	".....	INCH
MTL.....	METAL	N.....	NORTH/NORTHING



Plans Prepared By:

111 EAST CHAPEL HILL ST.  
SUITE 100  
DURHAM, NC 27701  
WWW.ALTAPLANING.COM  
NC LICENSE #P-5301

**alta** PLANNING + DESIGN  
FOR CHARLOTTE  
CITY OF CHARLOTTE  
UTILITY ASSETS MANAGEMENT  
PLANNING & DESIGN GROUP

NO.	DATE	BY	DESCRIPTION

**PRELIMINARY**  
Do Not Use For Construction

H:1"= 20'	V:1"= 4'	SCALE
2016-350	JOB NO.	CJA
MT	CHECKED BY	11/1/2017
DATE	APPROVED BY	---

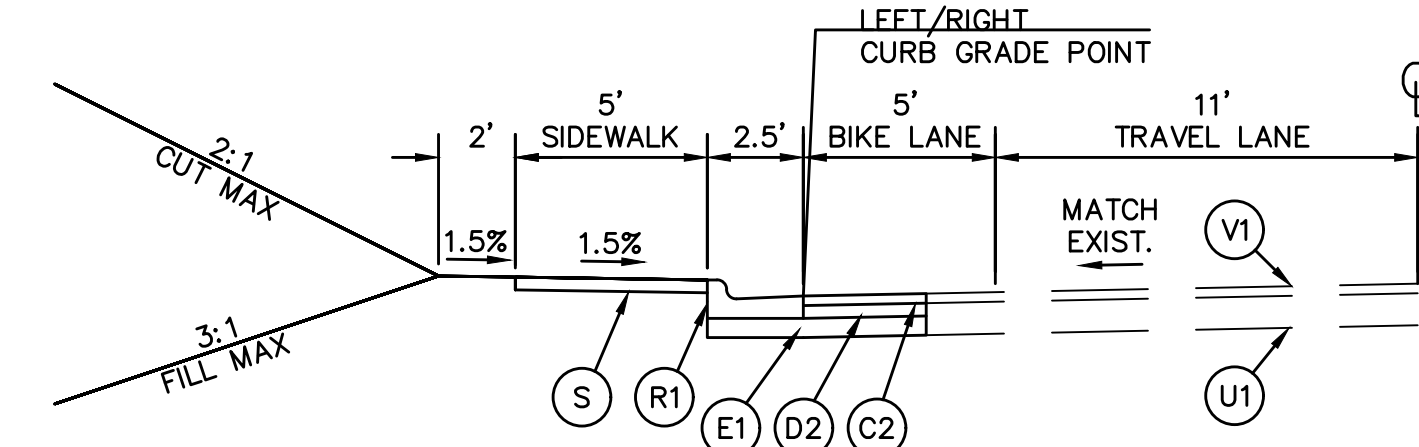
CENTRAL/KILBORNE/NORLAND  
PEDESTRIAN IMPROVEMENTS

**GENERAL NOTES**



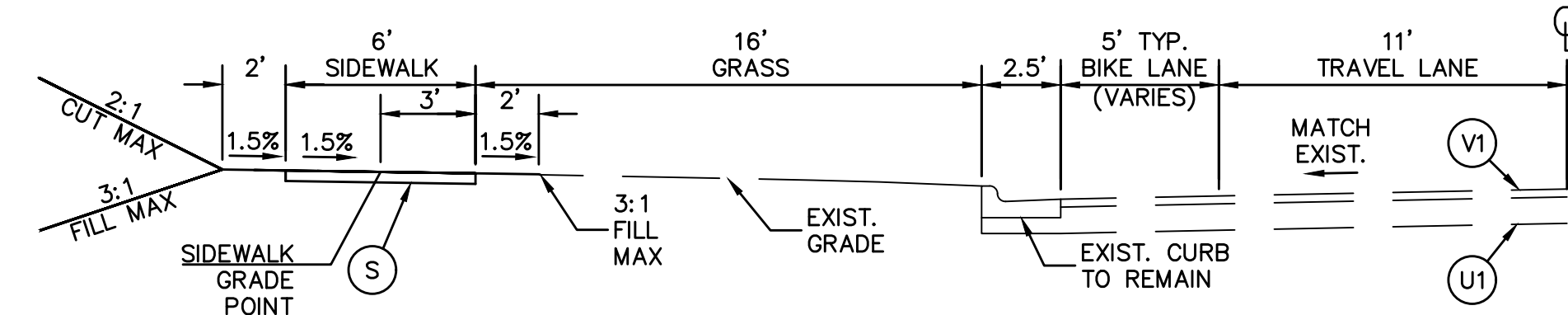
PAVEMENT SCHEDULE		
CODE	DESCRIPTION	DETAIL REFERENCE
(C1)	PROP. 2" ASPHALT CONCRETE SURFACE COURSE, TYPE SF 9.5A, AT AN AVERAGE RATE OF 110 LB LBS. PER SQ. YD. PER INCH	
(C2)	PROP. 3" ASPHALT CONCRETE SURFACE COURSE, TYPE S9.5B, AT AN AVERAGE RATE OF 112 LB LBS. PER SQ. YD. PER INCH IN TWO 1.5" LIFTS	CLDSM 11.09
(D1)	PROP. 6" AGGREGATE BASE COURSE	
(D2)	PROP. 4" ASPHALT CONCRETE INTERMEDIATE COURSE, TYPE I19.0B, AT AN AVERAGE RATE OF 114 LB LBS. PER SQ. YD. PER INCH, IN ONE LIFT	CLDSM 11.09
(E1)	PROP. 6" ASPHALT CONCRETE BASE COURSE, TYPE B25.0B, AT AN AVERAGE RATE OF 114 LB LBS. PER SQ. YD. PER INCH, IN TWO 3" LIFTS	CLDSM 11.09
(R1)	PROP. STANDARD 2'-6" CURB AND GUTTER	CLDSM 10.17A
(R2)	PROP. 2'-0" VALLEY GUTTER	CLDSM 10.17B
(R3)	PROP. 3" PEDAL SAFE CURB	DETAIL 1 SHEET 5
(R4)	PROP. 5" MONOLITHIC CONCRETE ISLAND	NCDOT 852.01
(R5)	PROP. 18" VERTICAL CURB	CLDSM 10.18
(R6)	PROP. 1'-6" MEDIAN CURB AND GUTTER	CLDSM 10.17B
(S)	PROP. 4" CONCRETE SIDEWALK	CLDSM 10.22
(T)	EARTH MATERIAL	
(U1)	EXIST. PAVEMENT	
(V1)	1 1/2" MILLING AND OVERLAY (FUTURE BY OTHERS)	
(V2)	1 1/2" MILLING AND OVERLAY (UNDER THIS CONTRACT)	

TYPICAL SECTION SCHEDULE			
CENTERLINE NAME	SIDE OF CENTERLINE	STATIONN RANGE	TYPICAL SECTION
-L1- NORLAND ROAD	LEFT	-L1- STA. 14+00 TO 15+76	TYPICAL SECTION NO. 1
		-L1- STA. 15+76 TO 15+94	TRANSITION
		-L1- STA. 15+94 TO 16+69	TYPICAL SECTION NO. 2
		-L1- STA. 16+69 TO 17+31	TRANSITION
		-L1- STA. 17+31 TO 26+75	TYPICAL SECTION NO. 3
		-L1- STA. 26+75 TO 39+49	TYPICAL SECTION NO. 4
		-L1- STA. 39+49 TO 39+59	TRANSITION
		-L1- STA. 39+59 TO 43+45	TYPICAL SECTION NO. 5
		-L1- STA. 15+76 TO 16+09	TRANSITION
		-L1- STA. 16+09 TO 22+11	TYPICAL SECTION NO. 4
	-L1- STA. 22+11 TO 22+21	TRANSITION	
	-L1- STA. 22+21 TO 23+38	TYPICAL SECTION NO. 5	
	-L1- STA. 23+38 TO 23+48	TRANSITION	
	-L1- STA. 23+48 TO 24+98	TYPICAL SECTION NO. 4	
	-L1- STA. 24+98 TO 25+14	TRANSITION	
	-L1- STA. 25+14 TO 34+93	TYPICAL SECTION NO. 5	
	-L1- STA. 34+93 TO 35+03	TRANSITION	
	-L1- STA. 35+03 TO 40+70	TYPICAL SECTION NO. 4	
	-L1- STA. 40+70 TO 40+80	TRANSITION	
	-L1- STA. 40+80 TO 41+54	TYPICAL SECTION NO. 5	
-L1- STA. 41+54 TO 41+64	TRANSITION		
-L1- STA. 41+64 TO 43+45	TYPICAL SECTION NO. 4		
-L1- STA. 43+45 TO 44+64	TRANSITION		
-L1- STA. 44+64 TO 45+03	TYPICAL SECTION NO. 6		
-L1- STA. 45+03 TO 47+50	INTERSECTION - SEE PLAN		
-L1- STA. 47+50 TO 48+73	TYPICAL SECTION NO. 7		
-L1- STA. 48+73 TO 50+21	TRANSITION		
-L1- STA. 50+21 TO 51+17	TYPICAL SECTION NO. 8		
-L1- STA. 51+17 TO 51+43	TRANSITION		
-L1- STA. 51+43 TO 51+82	TYPICAL SECTION NO. 9		
-L1- STA. 51+82 TO 52+29	TRANSITION		
-L1- STA. 52+29 TO 53+60	TYPICAL SECTION NO. 10		
-L1- STA. 53+60 TO 53+70	TRANSITION		
-L1- STA. 53+70 TO 53+75	TYPICAL SECTION NO. 11		
-L2- STA. 3472+31 TO 3474+76	INTERSECTION - SEE PLAN		
-L2- STA. 3474+76 TO 3475+15	TYPICAL SECTION NO. 12		
-L2- STA. 3475+15 TO 3475+37	TRANSITION		
-L2- STA. 3475+37 TO 3476+74	TYPICAL SECTION NO. 13		
-L2- STA. 3476+74 TO 3477+53	TRANSITION TO EXISTING		



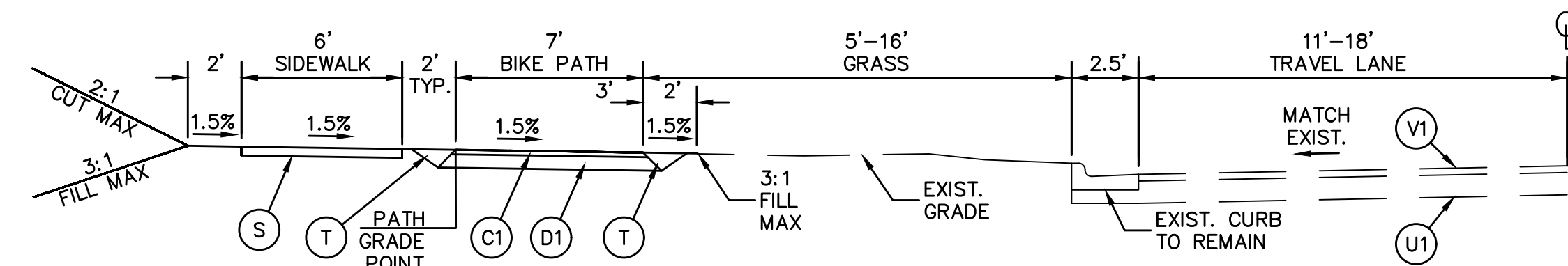
TYPICAL SECTION NO. 1

SEE TYPICAL SECTION SCHEDULE ON SHEET 3 FOR STATION RANGES. MIRROR SECTION WHERE NOTED AS "RIGHT."



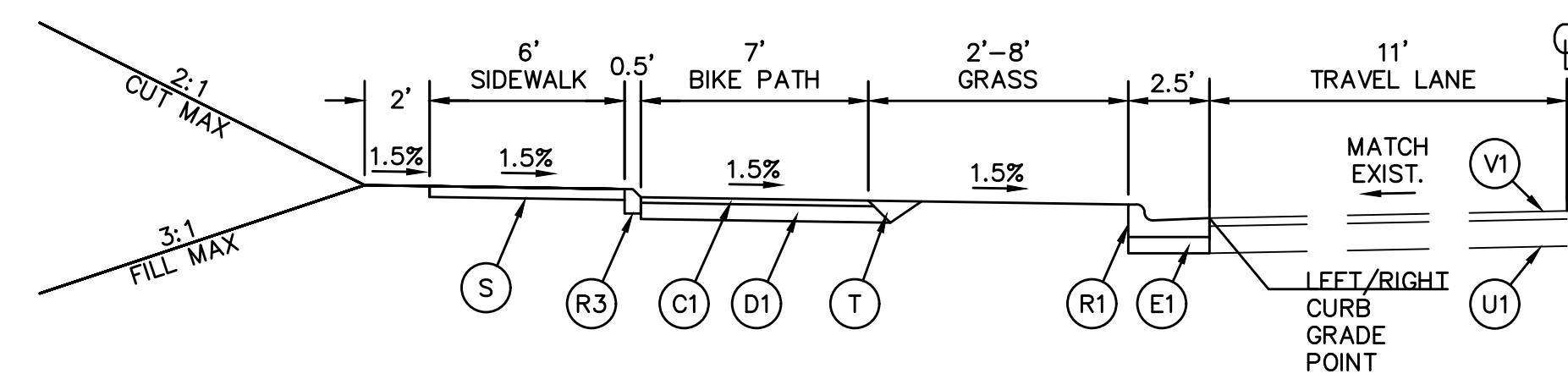
TYPICAL SECTION NO. 2

SEE TYPICAL SECTION SCHEDULE ON SHEET 3 FOR STATION RANGES. MIRROR SECTION WHERE NOTED AS "RIGHT."



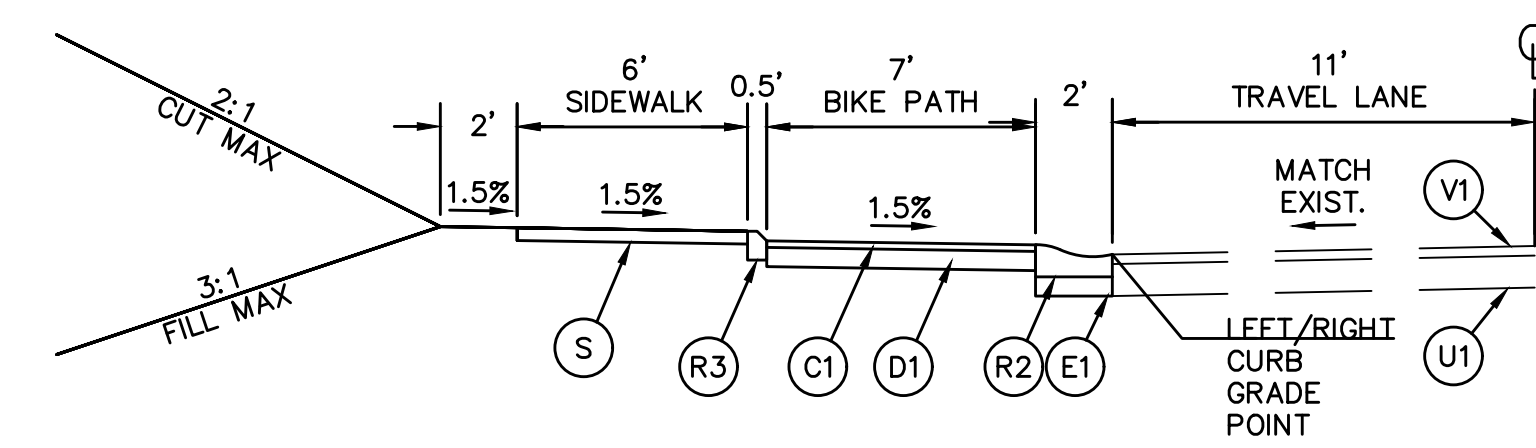
TYPICAL SECTION NO. 3

SEE TYPICAL SECTION SCHEDULE ON SHEET 3 FOR STATION RANGES. MIRROR SECTION WHERE NOTED AS "RIGHT."



TYPICAL SECTION NO. 4

SEE TYPICAL SECTION SCHEDULE ON SHEET 3 FOR STATION RANGES. MIRROR SECTION WHERE NOTED AS "RIGHT."



TYPICAL SECTION NO. 5

SEE TYPICAL SECTION SCHEDULE ON SHEET 3 FOR STATION RANGES. MIRROR SECTION WHERE NOTED AS "RIGHT."



Plans Prepared By:  
111 EAST CHAPEL HILL ST.  
SUITE 100  
DURHAM, NC 27701  
WWW.ALTA-PLANNING.COM  
NC LICENSE #P-5301



NO.	DATE	BY	DESCRIPTION

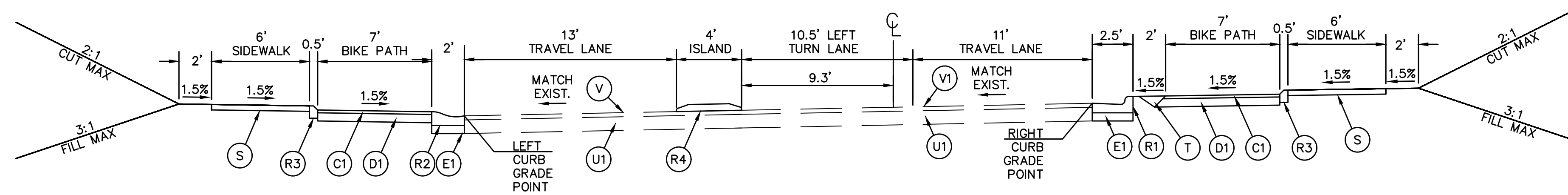
**PRELIMINARY**  
Do Not Use For Construction

H:1" = 20' V:1" = 4'  
SCALE  
MT  
CHECKED BY  
12/8/2017  
DATE

2016-350  
JOB NO.  
CJA  
PREPARED BY  
APPROVED BY

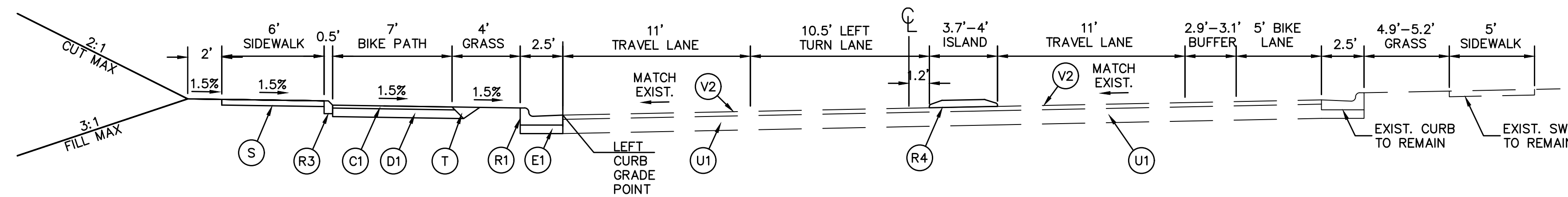
CENTRAL/KILBORNE/NORLAND  
PEDESTRIAN IMPROVEMENTS  
TYPICAL SECTIONS

SHEET  
**2B**  
OF  
**14**



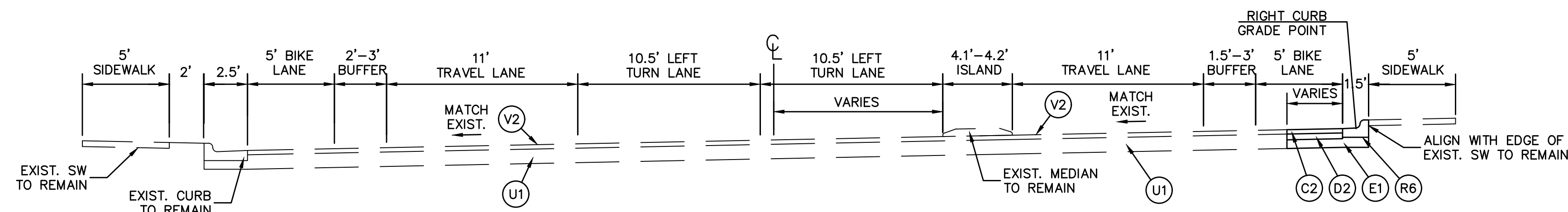
TYPICAL SECTION NO. 6

SEE TYPICAL SECTION SCHEDULE ON SHEET 3 FOR STATION RANGES.



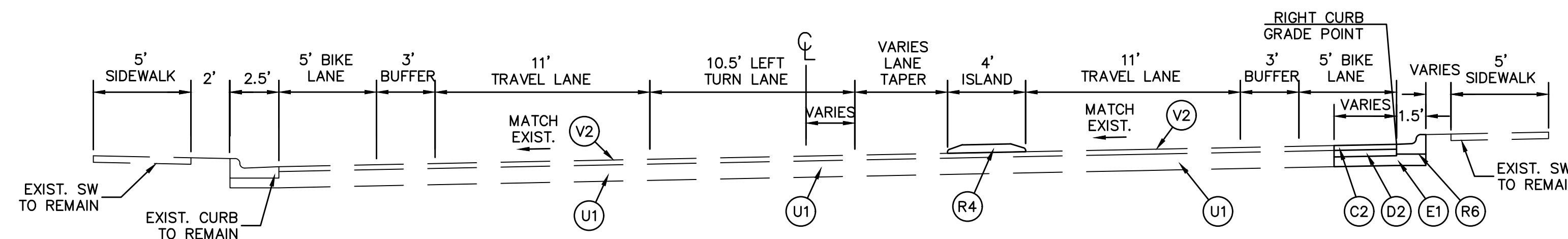
TYPICAL SECTION NO. 7

SEE TYPICAL SECTION SCHEDULE ON SHEET 3 FOR STATION RANGES.



TYPICAL SECTION NO. 8

SEE TYPICAL SECTION SCHEDULE ON SHEET 3 FOR STATION RANGES.



TYPICAL SECTION NO. 9

SEE TYPICAL SECTION SCHEDULE ON SHEET 3 FOR STATION RANGES.



Plans Prepared By:  
 111 EAST CHAPEL HILL ST.  
 SUITE 100  
 DURHAM, NC 27701  
 WWW.ALTA-PLANNING.COM  
 NC LICENSE #P-5301  
**alta**  
 PLANNING + DESIGN  
 FOR CHARLOTTE  
 CITY OF CHARLOTTE  
 PEDESTRIAN IMPROVEMENTS  
 PLANNING & DESIGN GROUP

NO.	DATE	BY	DESCRIPTION

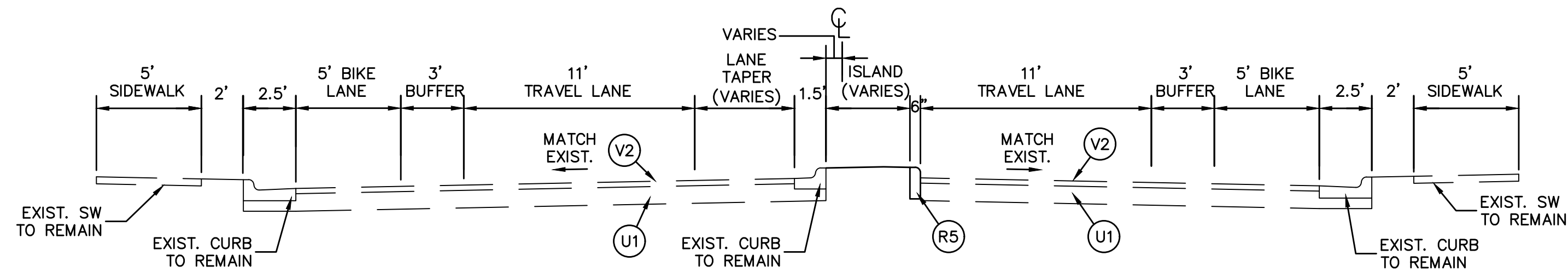
**PRELIMINARY**  
 Do Not Use For Construction

H:1"= 20'	V:1"= 4'	SCALE
2016-350	CJA	JOB NO.
MT	---	CHECKED BY
12/8/2017	---	DATE
---	---	PREPARED BY
---	---	APPROVED BY

CENTRAL/KILBORNE/NORLAND  
 PEDESTRIAN IMPROVEMENTS  
**TYPICAL SECTIONS**

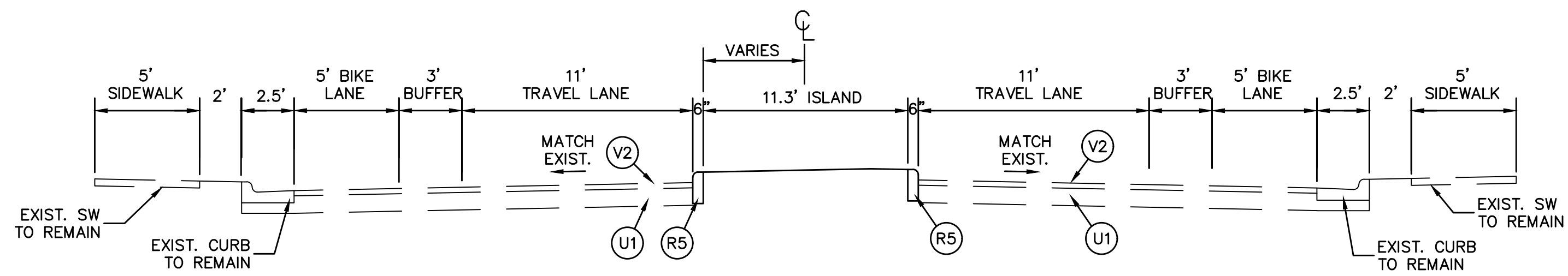
SHEET  
**2C**  
 OF  
**14**





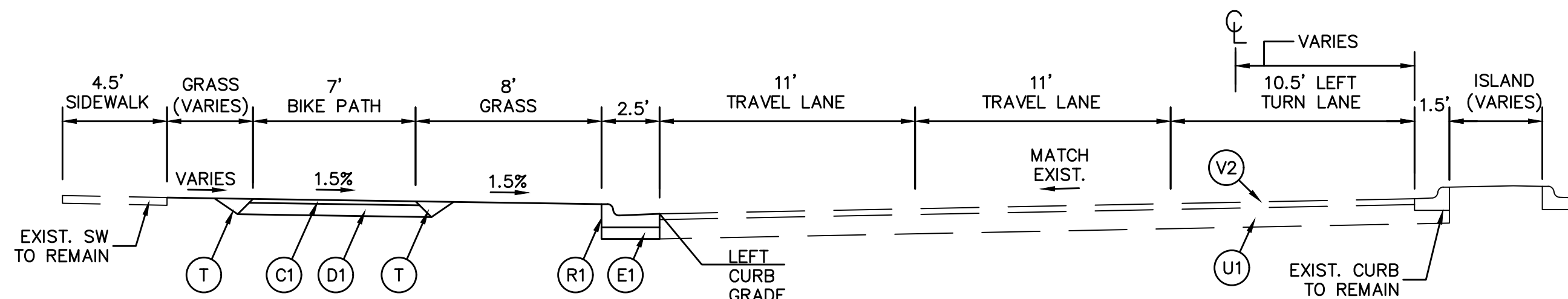
TYPICAL SECTION NO. 10

SEE TYPICAL SECTION SCHEDULE ON SHEET 3 FOR STATION RANGES.



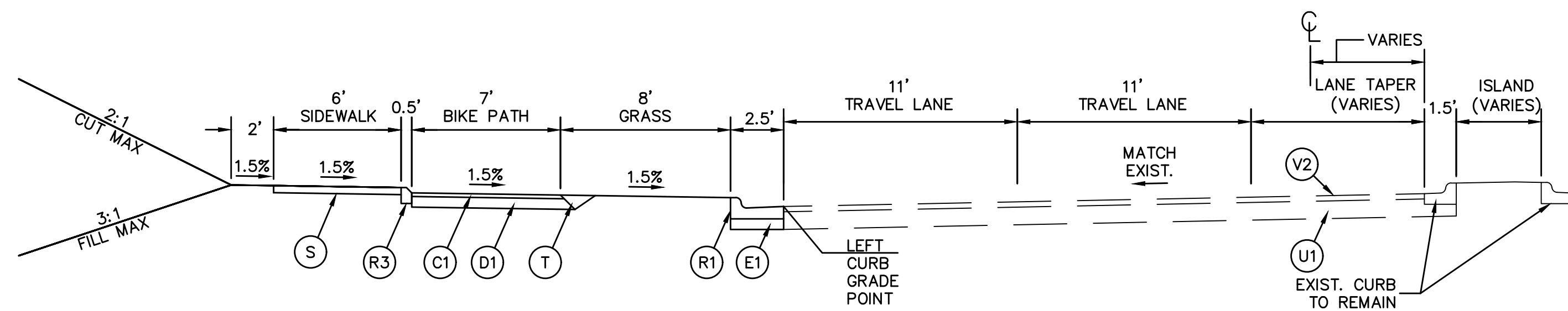
TYPICAL SECTION NO. 11

SEE TYPICAL SECTION SCHEDULE ON SHEET 3 FOR STATION RANGES.



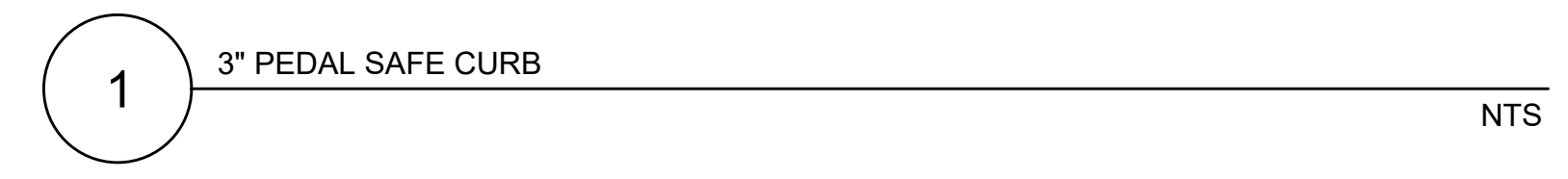
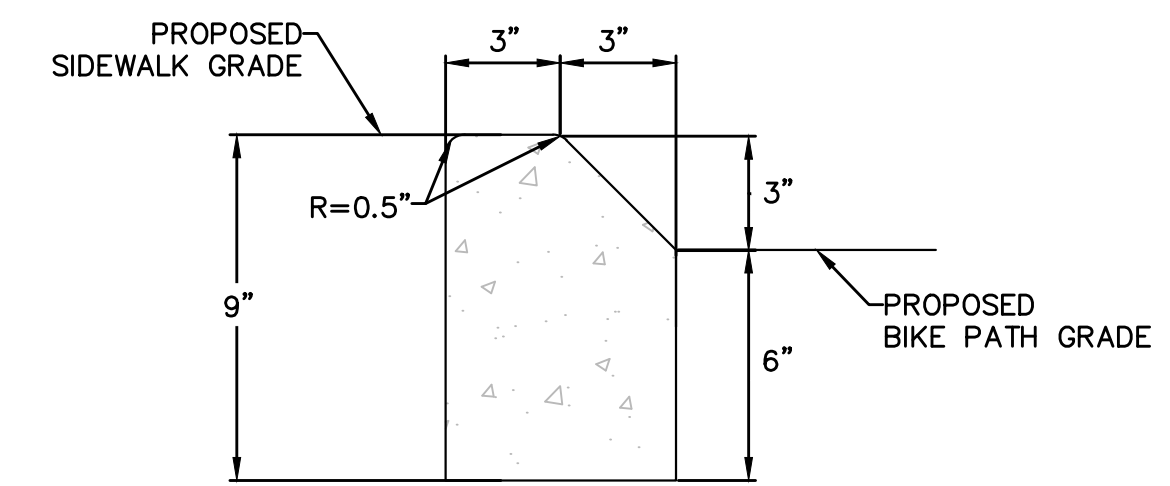
TYPICAL SECTION NO. 12

SEE TYPICAL SECTION SCHEDULE ON SHEET 3 FOR STATION RANGES.



TYPICAL SECTION NO. 13

SEE TYPICAL SECTION SCHEDULE ON SHEET 3 FOR STATION RANGES.



Plans Prepared By:  
 111 EAST CHAPEL HILL ST.  
 SUITE 100  
 DURHAM, NC 27701  
 WWW.ALTA-PLANNING.COM  
 NC LICENSE #P-5301

**alta**  
 PLANNING + DESIGN  
 FOR CHARLOTTE  
 CITY OF CHARLOTTE STREET MANAGEMENT  
 PLANNING & DESIGN GROUP

NO.	DATE	BY	DESCRIPTION

**PRELIMINARY**  
 Do Not Use For Construction

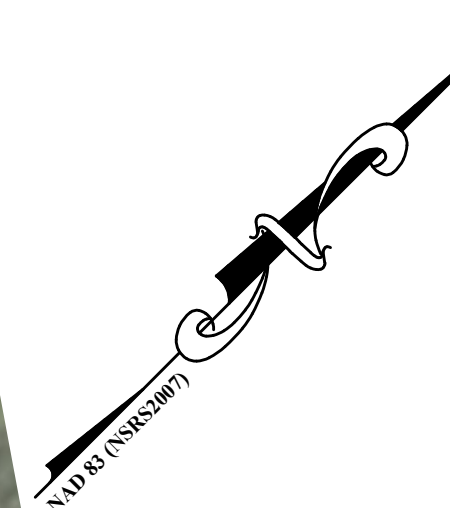
H:1"= 20'	V:1"= 4'	SCALE
2016-350	CJA	JOB NO.
MT	---	CHECKED BY
12/8/2017	---	DATE
---	---	APPROVED BY

CENTRAL/KILBORNE/NORLAND  
 PEDESTRIAN IMPROVEMENTS

**TYPICAL SECTIONS**

SHEET **2D** OF **14**





MATCH LINE STA 14+20 - SEE SHEET 5



Plans Prepared By:  
 111 EAST CHAPEL HILL ST.  
 SUITE 100  
 DURHAM, NC 27701  
 WWW.A3PLANNING.COM  
 NC LICENSE #P-5301

**alta**  
 PLANNING + DESIGN  
 FOR CHARLOTTE  
 CITY OF CHARLOTTE  
 PLANNING & DESIGN GROUP

NO.	DATE	BY	DESCRIPTION

**PRELIMINARY**  
 Do Not Use For Construction

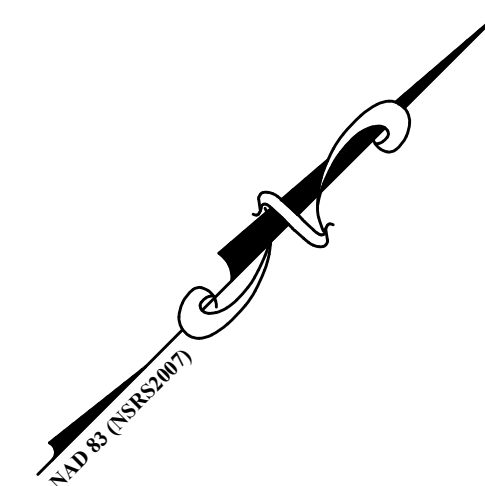
2016-350	SCALE	MT	12/8/2017
JCA	CHECKED BY		DATE
	PREPARED BY		
	APPROVED BY		

**CENTRAL/KILBORNE/NORLAND  
 PEDESTRIAN IMPROVEMENTS**

**PLAN**

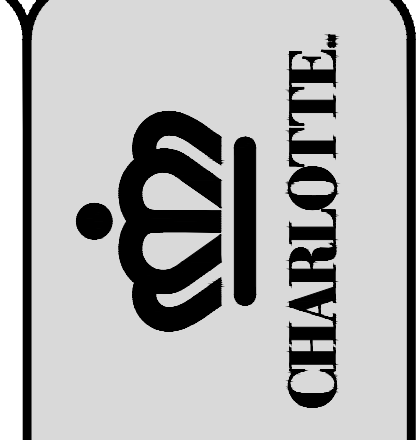
SHEET **4** OF **14**





MATCH LINE STA. 14+20 - SEE SHEET 4

MATCH LINE STA. 19+90 - SEE SHEET 6



**Plans Prepared By:**  
 111 EAST CHAPEL HILL ST.  
 SUITE 100  
 DURHAM, NC 27701  
 WWW.A3PLANNING.COM  
 NC LICENSE #P-5301

**alta**  
 PLANNING + DESIGN  
 FOR CHARLOTTE  
 CITY OF CHARLOTTE  
 PLANNING & DESIGN GROUP

NO.	DATE	BY	DESCRIPTION

**PRELIMINARY**  
 Do Not Use For Construction

2016-350	SCALE	H:1"= 20'	V:1"= 4'
CJA	PREPARED BY	MT	CHECKED BY
---	APPROVED BY	---	DATE
		12/8/2017	

**CENTRAL/KILBORNE/NORLAND  
 PEDESTRIAN IMPROVEMENTS**

**PLAN**

SHEET **5** OF **14**

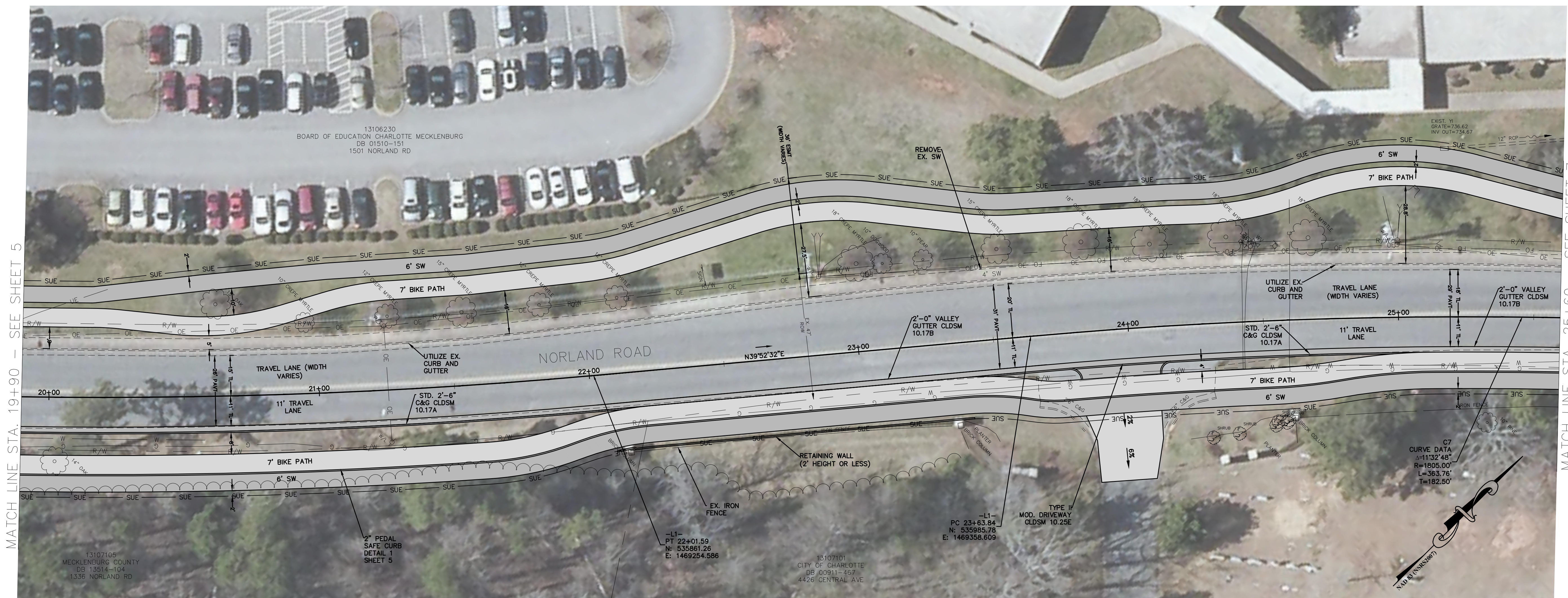


NO.	DATE	BY	DESCRIPTION

**PRELIMINARY**  
Do Not Use For Construction

2016-350 JOB NO.	H:1"= 20' V:1"= 4' SCALE
CJA PREPARED BY	MT CHECKED BY
---	12/8/2017 DATE
---	---
---	---
---	---

CENTRAL/KILBORNE/NORLAND PEDESTRIAN IMPROVEMENTS	
SHEET <b>6</b>	OF <b>14</b>
<b>PLAN</b>	



MATCH LINE STA. 19+90 - SEE SHEET 5

MATCH LINE STA. 25+60 - SEE SHEET 7

13107105  
MECKLENBURG COUNTY  
DB 13514-104  
1338 NORLAND RD

2" PEDAL  
SAFE CURB  
DETAIL  
SHEET 5

-L1-  
PT 22+01.59  
N: 535861.26  
E: 1469254.586

-L1-  
PC 23+63.84  
N: 535985.78  
E: 1469358.609

13107101  
CITY OF CHARLOTTE  
DB 00911-467  
4426 CENTRAL AVE





MATCH LINE STA. 25+60 - SEE SHEET 6



MATCH LINE STA. 31+40 - SEE SHEET 8



**Plans Prepared By:**  
 111 EAST CHAPEL HILL ST.  
 SUITE 100  
 DURHAM, NC 27701  
 WWW.A13PLANNING.COM  
 NC LICENSE #P-5301

**alta**  
 PLANNING + DESIGN  
 FOR CHARLOTTE  
 CITY OF CHARLOTTE  
 PLANNING & DESIGN GROUP

NO.	DATE	BY	DESCRIPTION

**PRELIMINARY**  
 Do Not Use For Construction

2016-350	2016-350	H:1"=20'	V:1"=4'
JOB NO.	SCALE	MT	CHECKED BY
CJA	PREPARED BY	MT	DATE
---	APPROVED BY	12/8/2017	DATE

**CENTRAL/KILBORNE/NORLAND  
 PEDESTRIAN IMPROVEMENTS**

**PLAN**

SHEET **7** OF **14**





MATCH LINE STA. 31+40 - SEE SHEET 7

MATCH LINE STA. 37+20 - SEE SHEET 9



**alta**  
PLANNING + DESIGN  
FOR CHARLOTTE  
CITY OF CHARLOTTE  
PLANNING & DESIGN GROUP

Plans Prepared By:  
111 EAST CHAPEL HILL ST.  
SUITE 100  
DURHAM, NC 27701  
WWW.ALTADESIGN.COM  
NC LICENSE #P-5301

NO.	DATE	BY	DESCRIPTION

**PRELIMINARY**  
Do Not Use For Construction

2016-350	2016-350	MT	12/8/2017
JOB NO.	SCALE H:1"=20' V:1"=4'	CHECKED BY	DATE
---	CJA	---	---
---	PREPARED BY	---	---
---	APPROVED BY	---	---

**CENTRAL/KILBORNE/NORLAND  
PEDESTRIAN IMPROVEMENTS**

**PLAN**

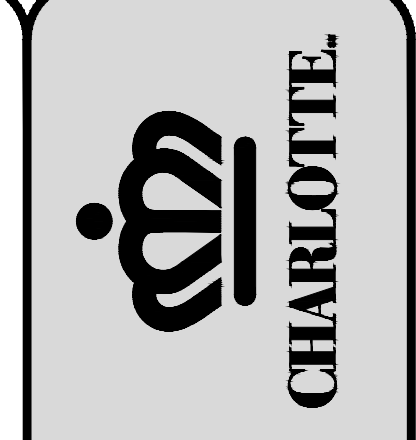
SHEET **8** OF **14**





MATCH LINE STA. 37+20 - SEE SHEET 8

MATCH LINE STA. 42+85 - SEE SHEET 10



Plans Prepared By:  
 111 EAST CHAPEL HILL ST.  
 SUITE 100  
 DURHAM, NC 27701  
 WWW.ALTADESIGN.COM  
 NC LICENSE #P-3301

**alta**  
 PLANNING + DESIGN  
 FOR CHARLOTTE  
 CITY OF CHARLOTTE  
 PLANNING & DESIGN GROUP

NO.	DATE	BY	DESCRIPTION

**PRELIMINARY**  
 Do Not Use For Construction

2016-350	SCALE	H:1"= 20'	V:1"= 4'
CJA	PREPARED BY	MT	CHECKED BY
---	APPROVED BY	---	DATE
			12/8/2017

**CENTRAL/KILBORNE/NORLAND  
 PEDESTRIAN IMPROVEMENTS**

**PLAN**

SHEET **9** OF **14**



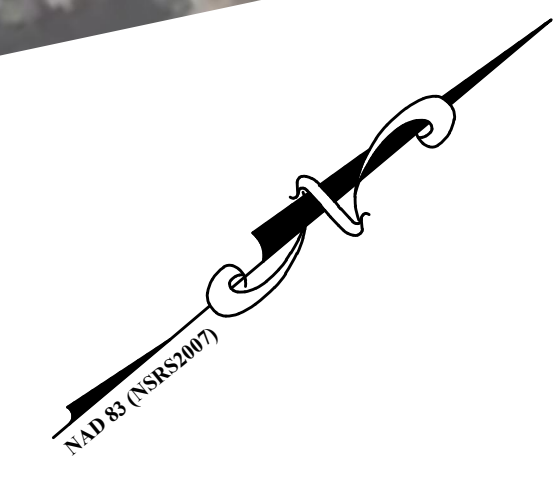
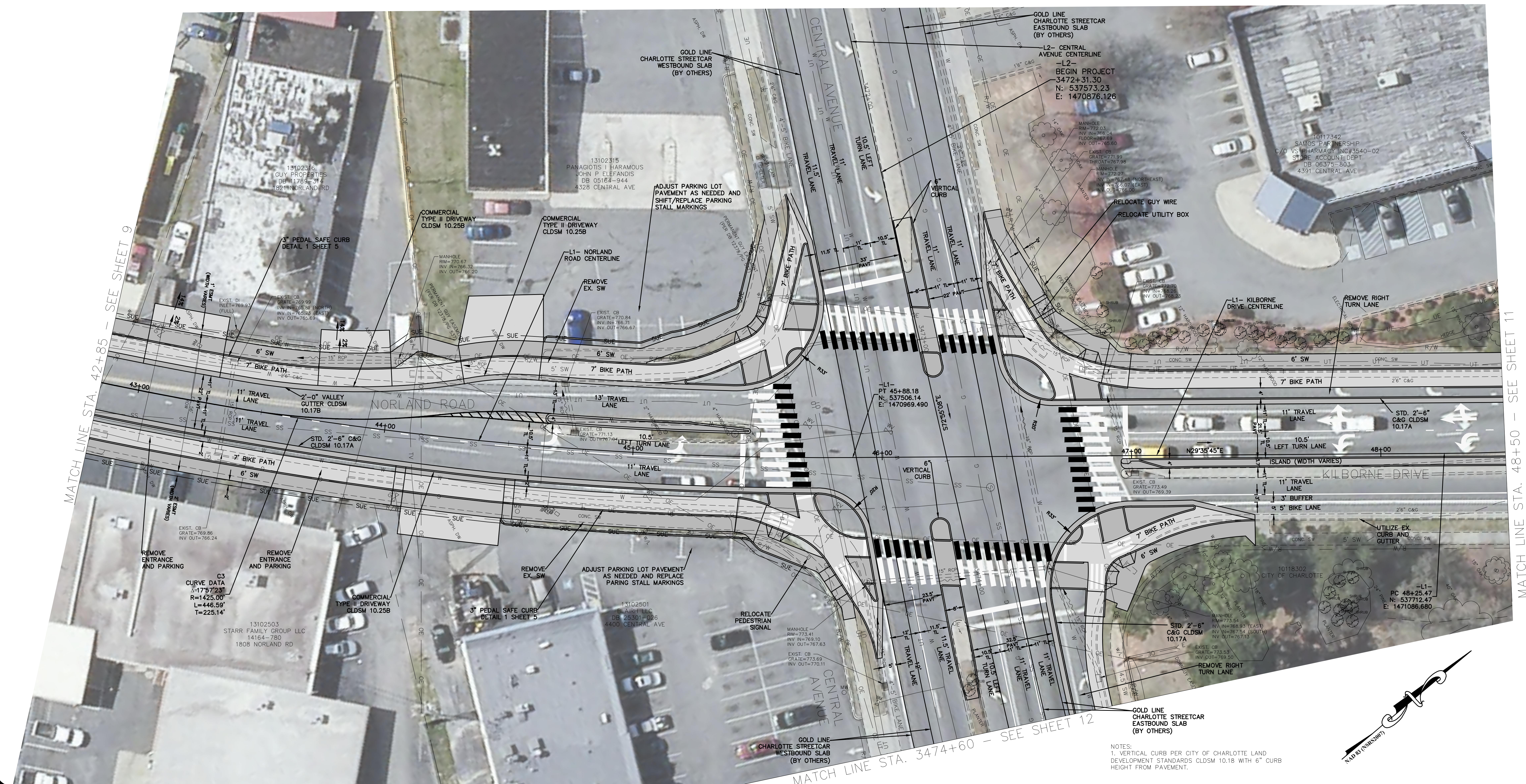
NO.	DATE	BY	DESCRIPTION

**PRELIMINARY**  
 Do Not Use For Construction

2016-350	JOB NO.	CJA	PREPARED BY	MT	CHECKED BY	12/8/2017	DATE
H:1"= 20'	SCALE	V:1"= 4'					

**CENTRAL/KILBORNE/NORLAND  
 PEDESTRIAN IMPROVEMENTS  
 PLAN**

SHEET **10** OF **14**

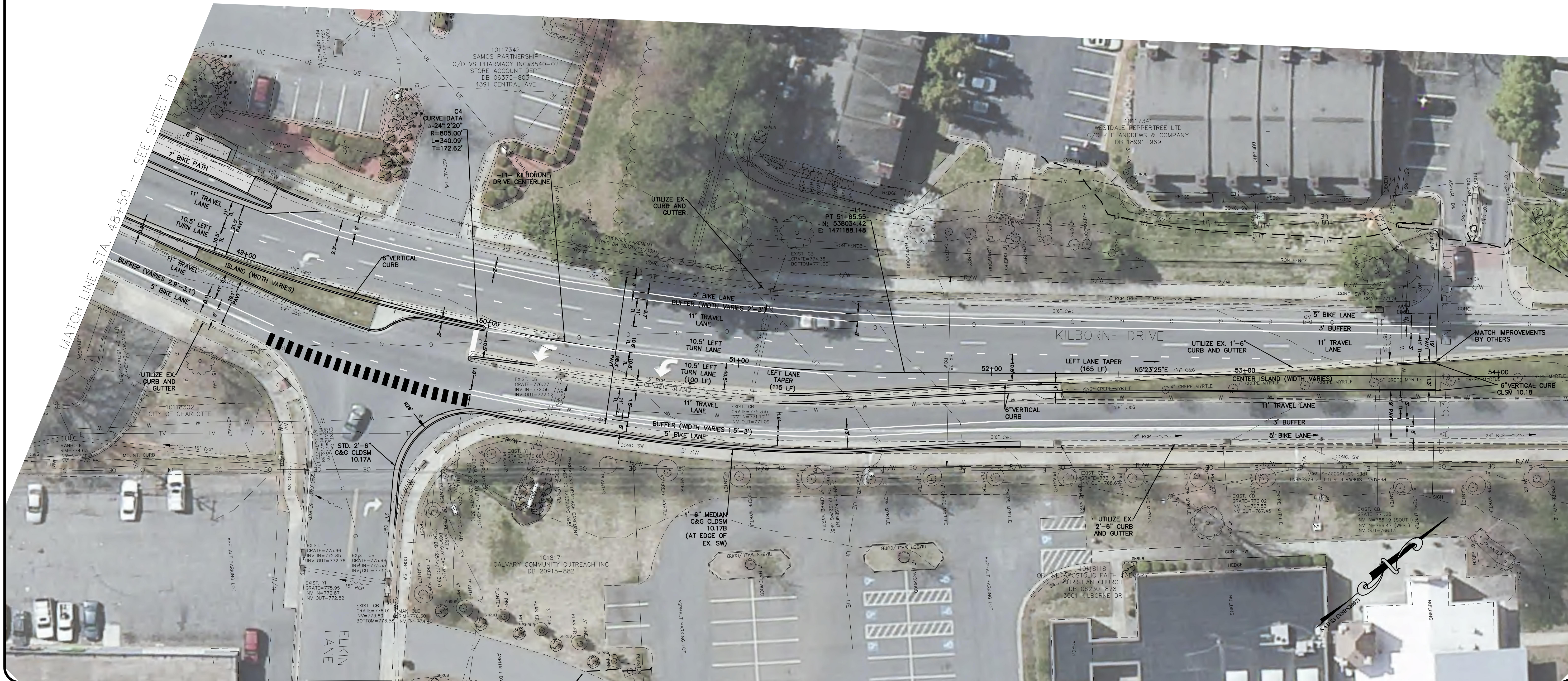


MATCH LINE STA. 42+85 - SEE SHEET 9

MATCH LINE STA. 3474+60 - SEE SHEET 12

MATCH LINE STA. 48+50 - SEE SHEET 11





Plans Prepared By:  
 111 EAST CHAPEL HILL ST.  
 SUITE 100  
 DURHAM, NC 27701  
 WWW.A3PLANNING.COM  
 NC LICENSE #P-3301

**alta**  
 PLANNING + DESIGN  
 FOR CHARLOTTE  
 CITY OF CHARLOTTE  
 PLANNING & DESIGN GROUP

NO.	DATE	BY	DESCRIPTION

**PRELIMINARY**  
 Do Not Use For Construction

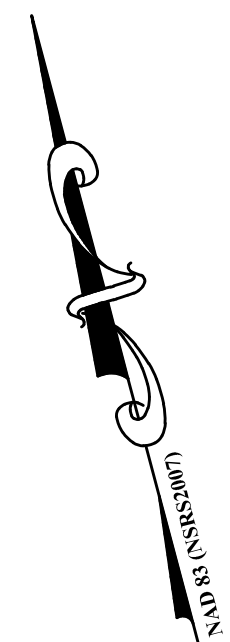
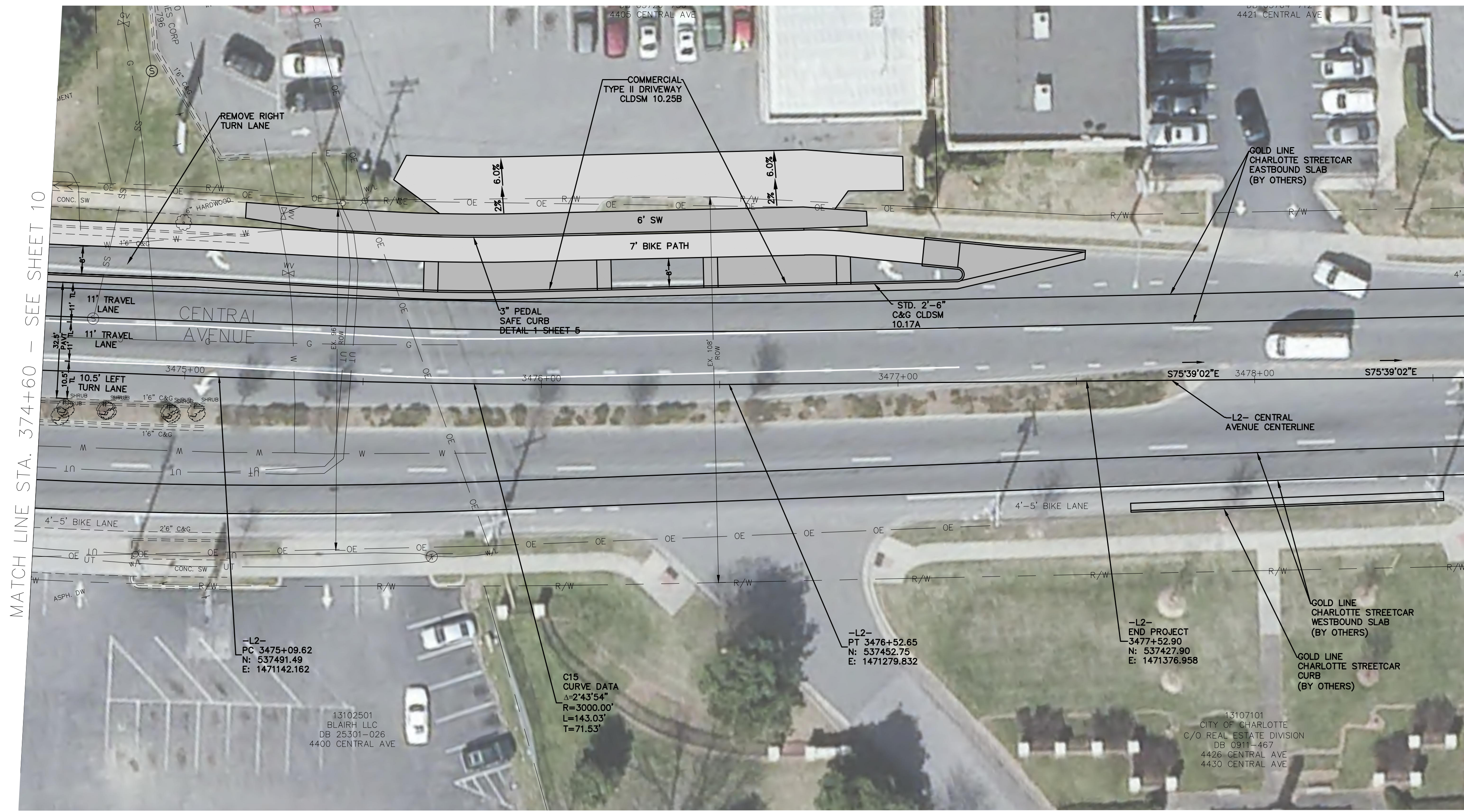
2016-350	2016-350	2016-350	2016-350
JOB NO.	CJA	PREPARED BY	APPROVED BY
SCALE	MT	CHECKED BY	DATE
H:1" = 20'	V:1" = 4'		12/8/2017

**CENTRAL/KILBORNE/NORLAND**  
**PEDESTRIAN IMPROVEMENTS**

**PLAN**

SHEET **11** OF **14**





Plans Prepared By:  
**alta**  
 PLANNING + DESIGN  
 FOR CHARLOTTE  
 CITY OF CHARLOTTE  
 PLANNING & DESIGN GROUP

111 EAST CHAPEL HILL ST.  
 SUITE 100  
 DURHAM, NC 27701  
 WWW.ALTADESIGN.COM  
 NC LICENSE #P-5301

NO.	DATE	BY	DESCRIPTION

**PRELIMINARY**  
 Do Not Use For Construction

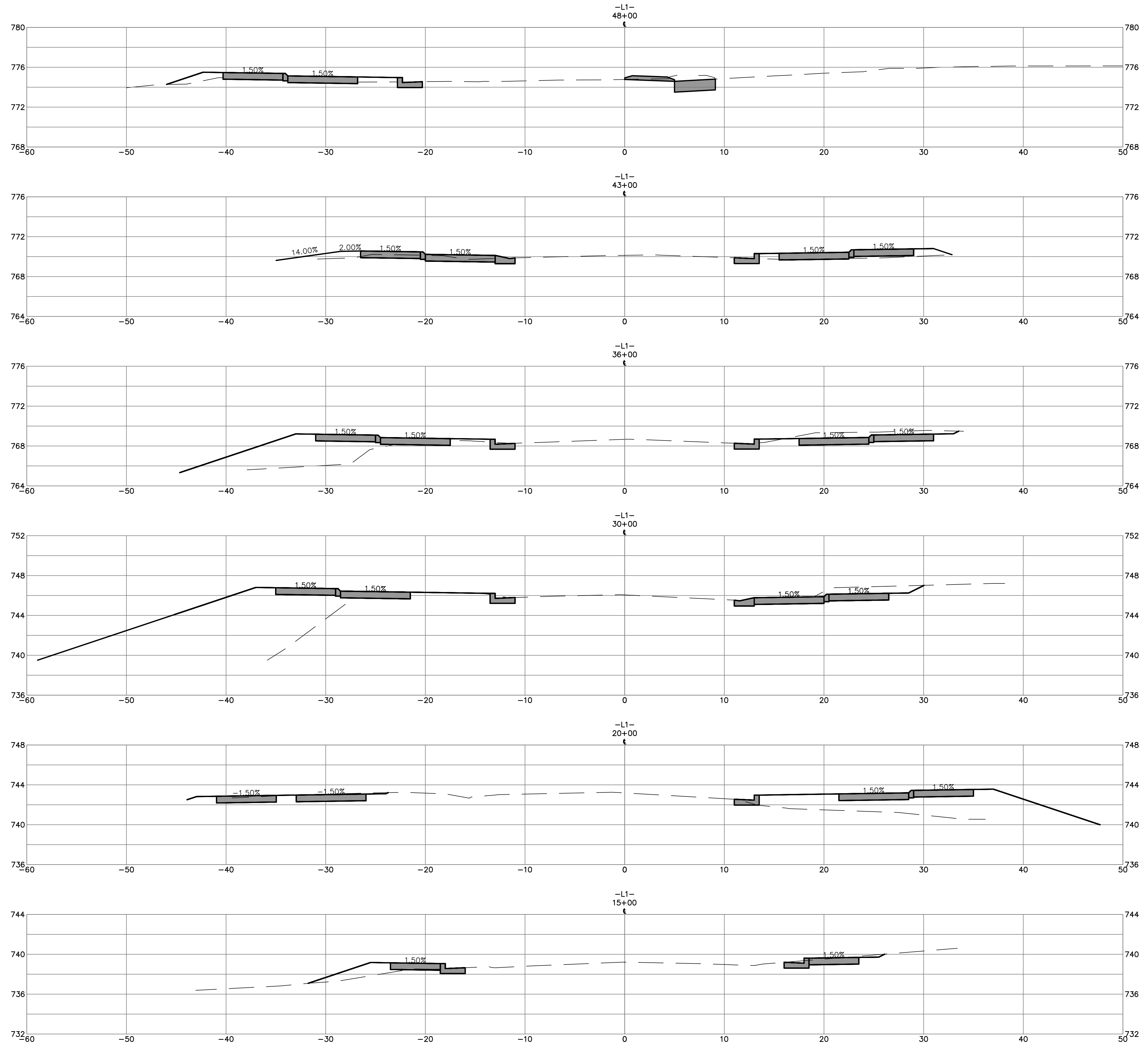
2018-350 JOB NO.	H:1"= 20' V:1"= 4'	SCALE
CJA PREPARED BY	MT CHECKED BY	DATE
---	---	12/8/2017
---	---	APPROVED BY

**CENTRAL/KILBORNE/NORLAND  
 PEDESTRIAN IMPROVEMENTS**

**PLAN**

SHEET **12** OF **14**





Plans Prepared By:  
 111 EAST CHAPEL HILL ST.  
 SUITE 100  
 DURHAM, NC 27701  
 WWW.ALTA-PLANNING.COM  
 NC LICENSE #P-5301

**alta**  
 PLANNING + DESIGN  
 FOR CHARLOTTE  
 CITY OF CHARLOTTE  
 PEDESTRIAN SAFETY MANAGEMENT  
 PLANNING & DESIGN GROUP

NO.	DATE	BY	DESCRIPTION

**PRELIMINARY**  
 Do Not Use For Construction

H:1" = 5' V:1" = 5'	SCALE	MT	CHECKED BY	12/8/2017	DATE
2016-350	JOB NO.	CJA	PREPARED BY	---	APPROVED BY

CENTRAL/KILBORNE/NORLAND  
 PEDESTRIAN IMPROVEMENTS

**CROSS-SECTIONS**

SHEET  
**XS-1**  
 OF  
**14**