

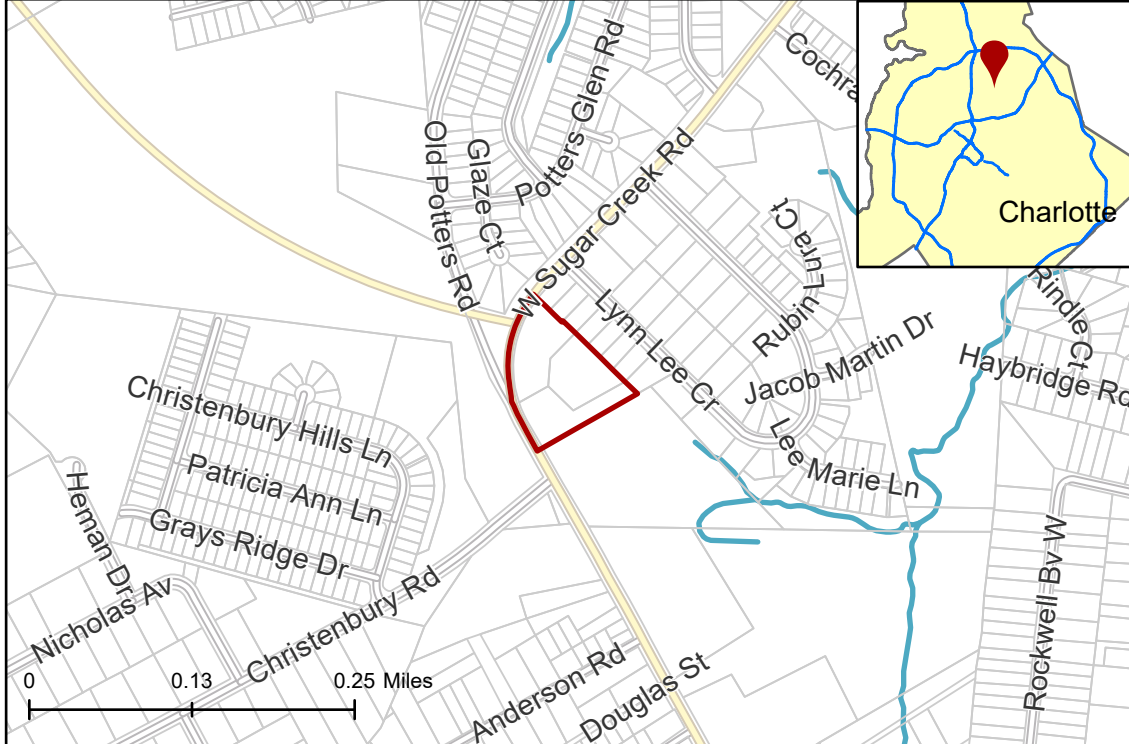
## 2022-195: South Oak Partners, LLC

**Current Zoning** R-3 (Single Family Residential)

**Requested Zoning** R-6 (Single Family Residential)

Approximately 3.75 acres

### Location of Requested Rezoning



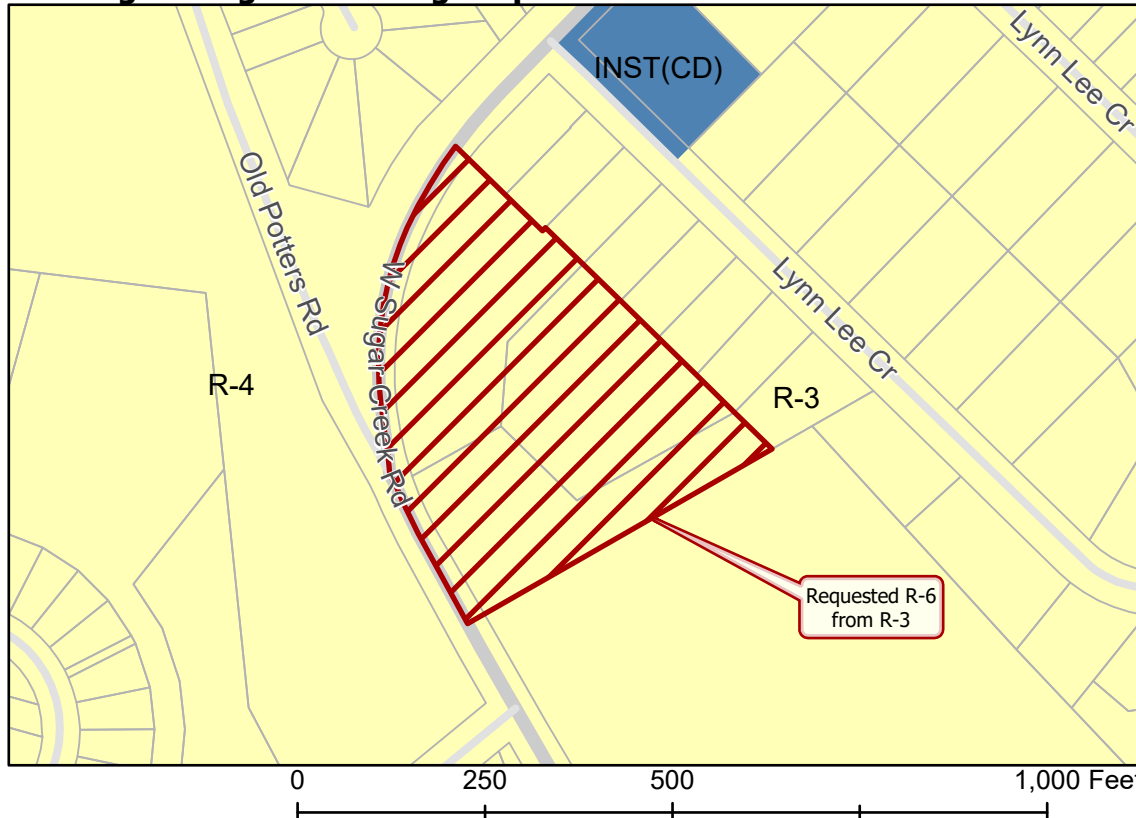
## Rezoning Map



- 2022-195
- Inside City Limits
- Parcel
- Streams
- City Council District
- 2-Malcolm Graham



### Existing Zoning & Rezoning Request



- Requested R-6 from R-3
- Zoning Classification
- Single Family
- Institutional



Map Created 3/10/2023