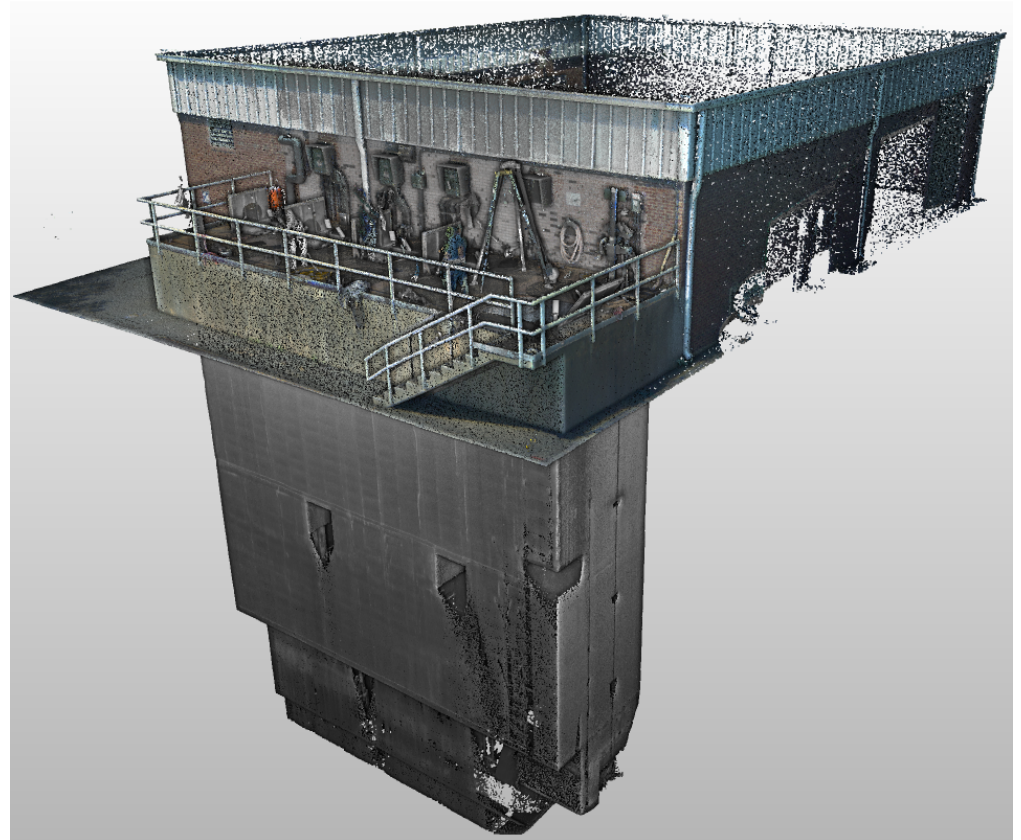


Beaverdam Creek Pump Station Expansion– Prebid Meeting

April 26, 2023



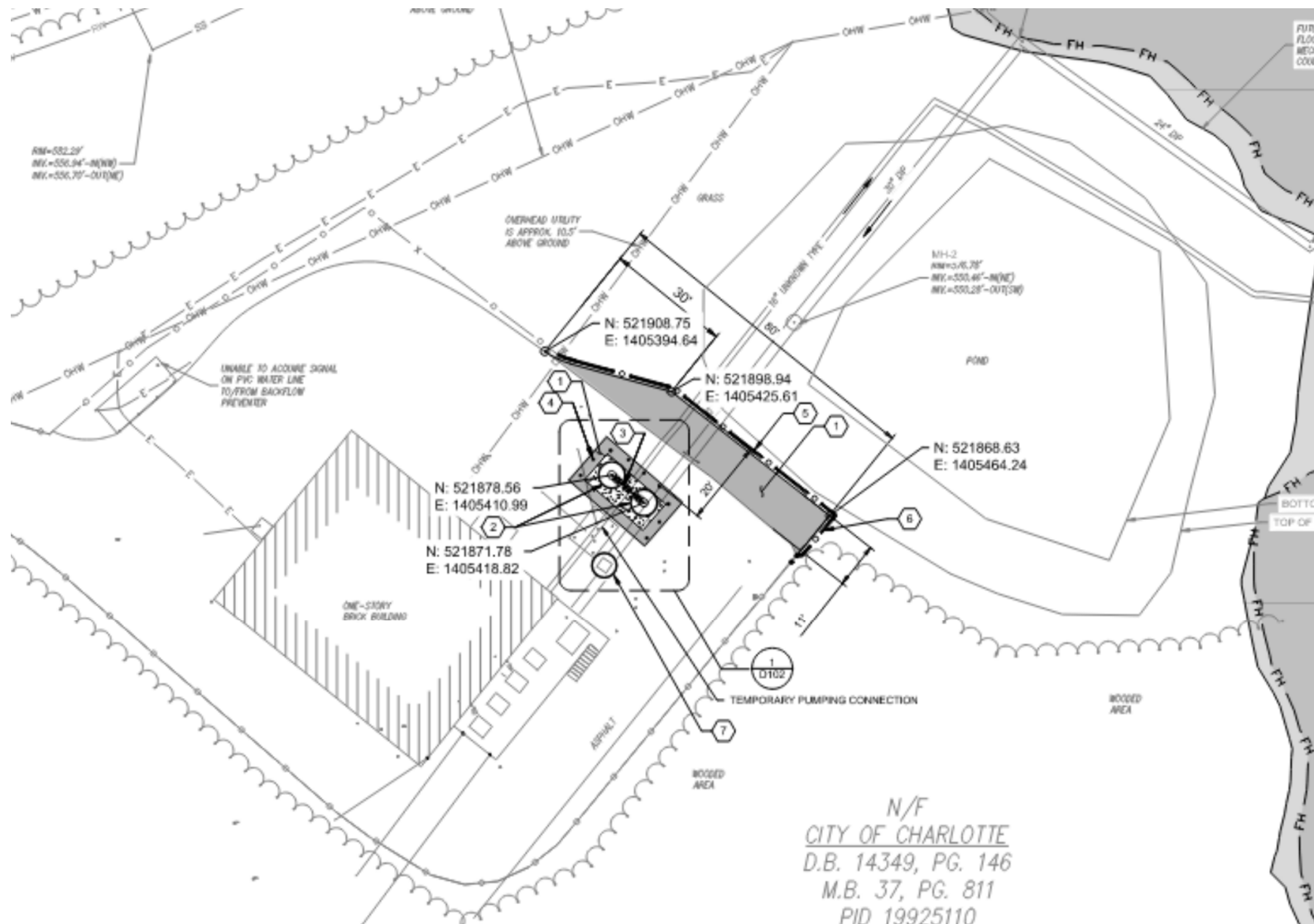
Overview

- Increase firm capacity of pump station to 5.5 MGD.
- Replace 2 existing sets of two-stage 75-hp pumps with 4 sets of two-stage 100-hp pumps.
- Replace flywheels with surge tanks
 - Extend asphalt to maintain emergency services access.
- Wet well modifications
 - Liner repair (T-Loc), including receiving manhole
 - Baffle wall, ramps, cones as noted in S-102 and S-301.
- Equipment to be reused:
 - Existing guide rails, discharge lines and elbows for submersible pumps
 - Equipment (i.e. pumps) selected by Owner for salvage shall be transported to a location selected by the Owner.

General Sequence of Work

- Maintain conveyance of wastewater
- Bypass pumping tested & commissioned before replacing existing pumps.
- Surge tanks installed, tested, and commissioned prior to testing of new pumps.
- Prior to removal of bypass pumping system:
 - Wet well modifications inspected
 - All four pump sets installed, tested and commissioned.
- Commissioning and testing can be operated using wastewater.

Overview of Site



Items of Note

- Section 43 23 92 (Pumping System) – 1st and 2nd stage pumps must have identical capacity curves
- CITI – Systems Integrator
- Schedule – 335 days to substantial completion; 365 days to final payment
- Permits (applications complete):
 - Fast Track Sewer Extension
 - City of Charlotte Land Development Permit
 - Mecklenburg County Building Code Enforcement
- Maintaining accessibility of the site

Questions

- Submit questions to Lreid@brwnncald.com.