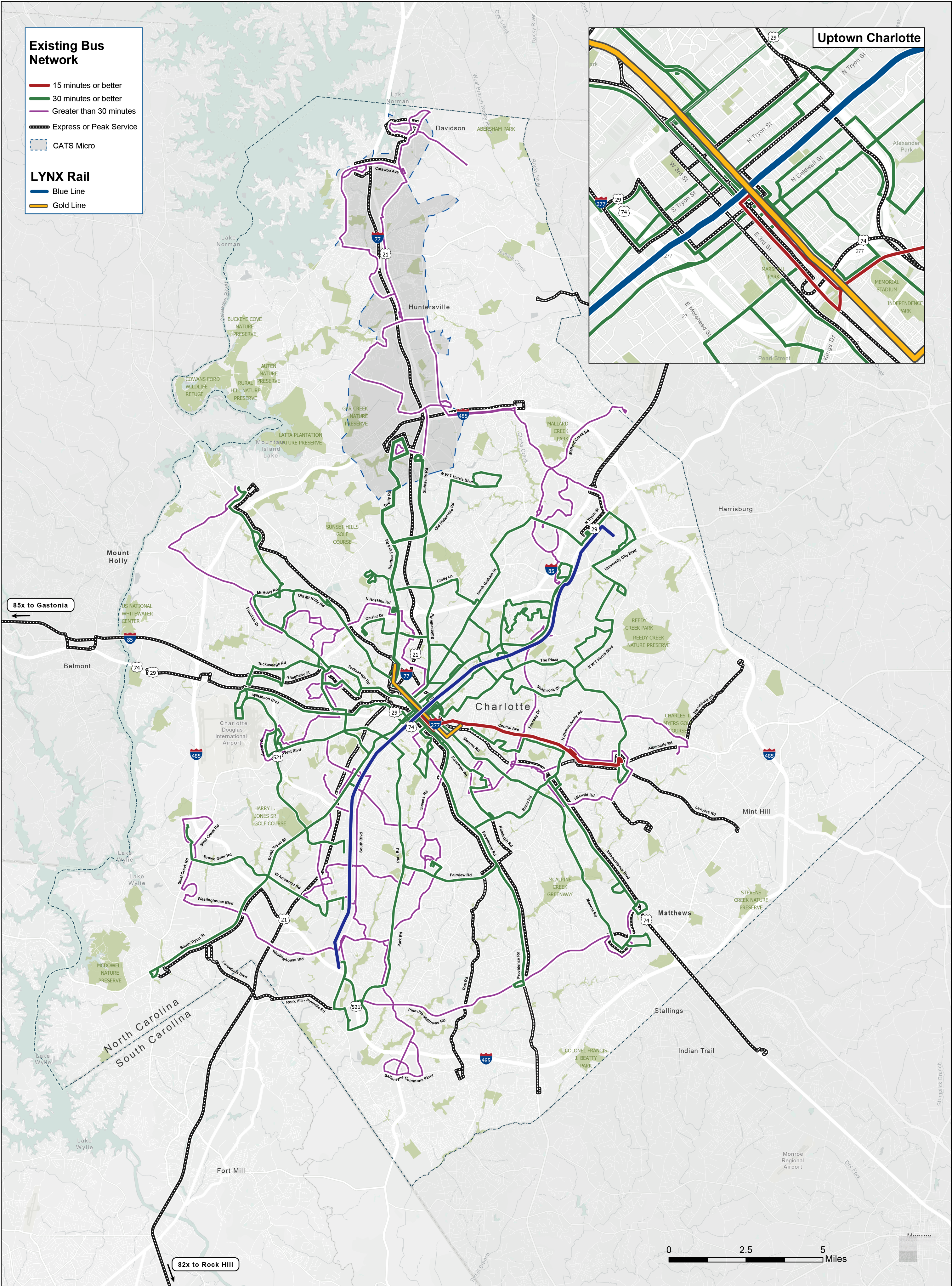




Existing CATS System



By fully implementing the Better Bus plan, **450,000** more people will be within ½ mile of high frequency transit service

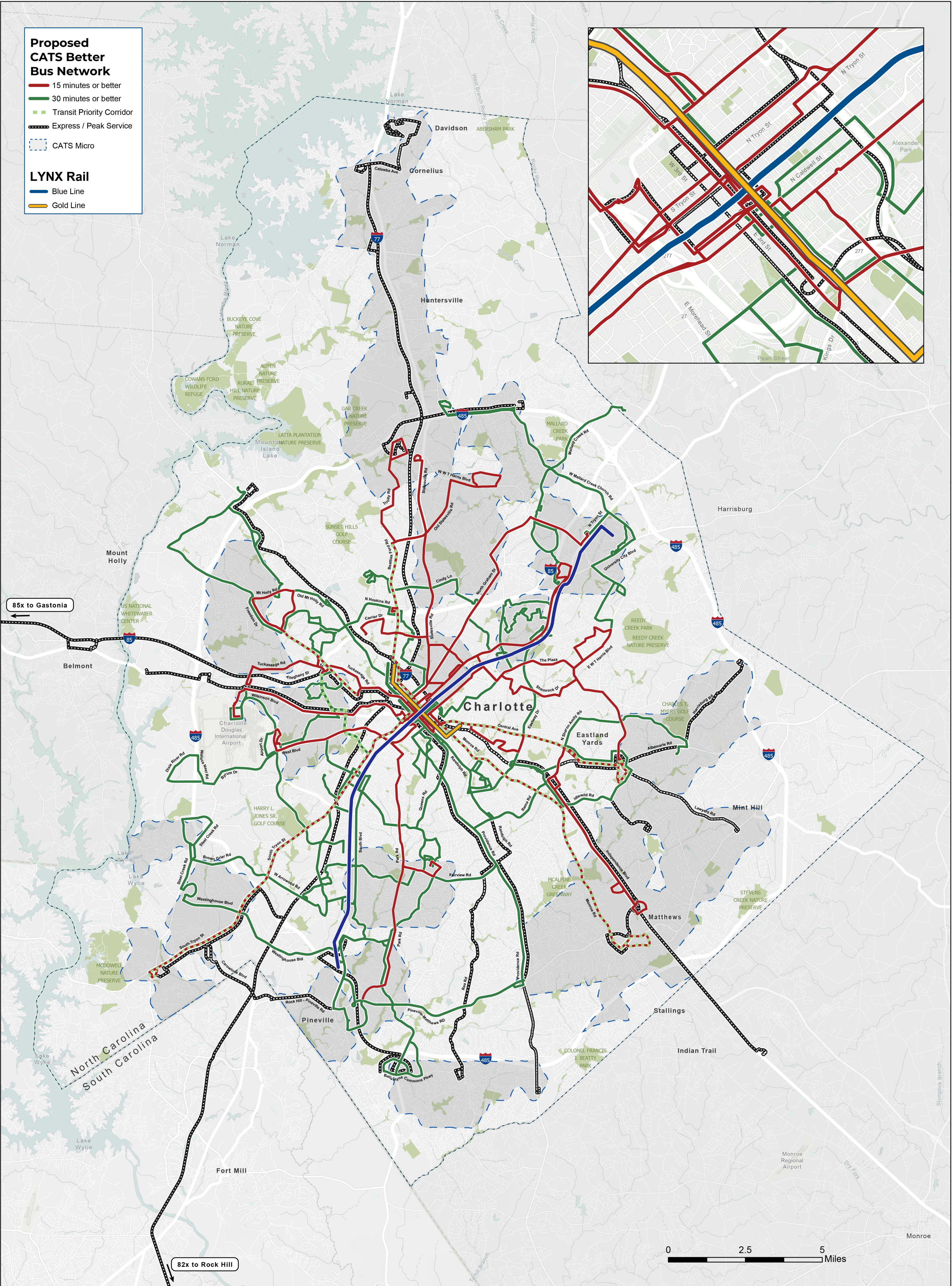
In the Better Bus network, **over 90%** of Mecklenburg County will have access to at least 30-minute service

With the implementation of the Better Bus plan, **61%** of jobs in Mecklenburg County will be accessible by high frequency transit service, an increase from **17%** today

In the Better Bus network, CATS would cover **over 100 sq. miles** more of Mecklenburg County

With the Better Bus plan, **111k low-income people** and **295k people of color** have access to high-frequency service, increase from **19k** and **41k** today

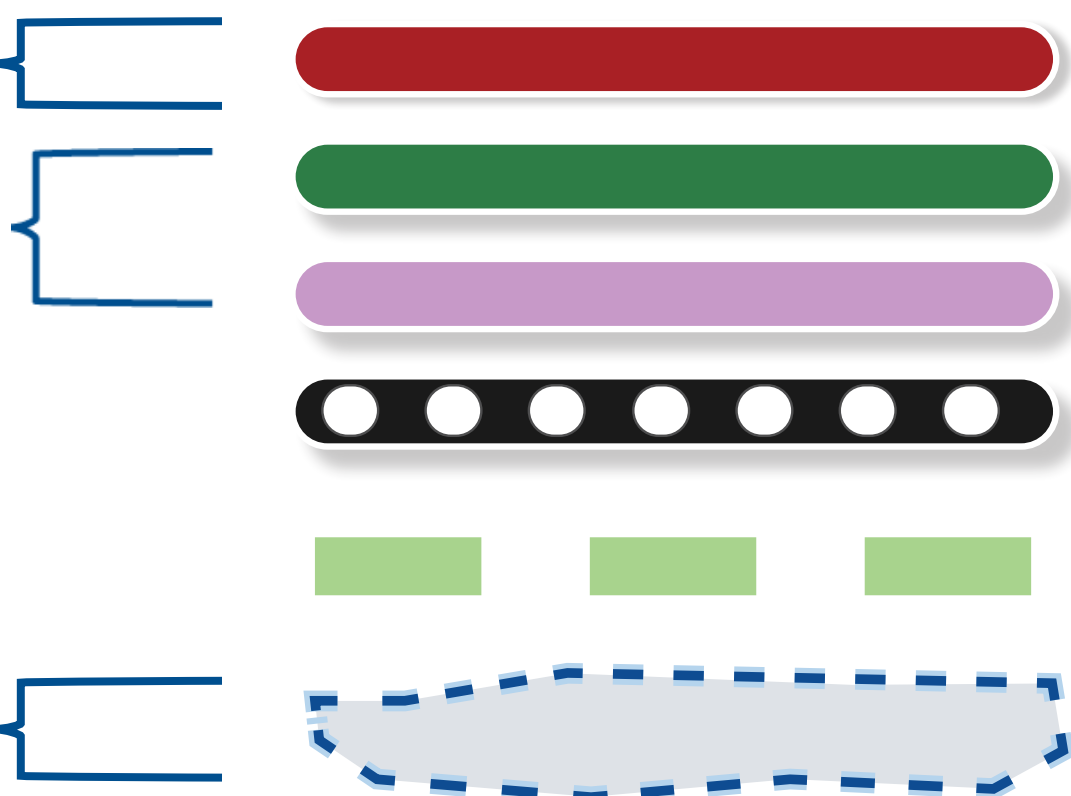
Better Bus System



Currently only Route 9 operates at high frequency (15 minutes)

Most routes are at 30 minute or greater service frequency

Only one CATS Micro zone is operational as of Feb 20th, 2025



Fifteen routes would run at high frequency, 15 minutes or better, all day

Increased all day service system-wide to 30 minutes or better

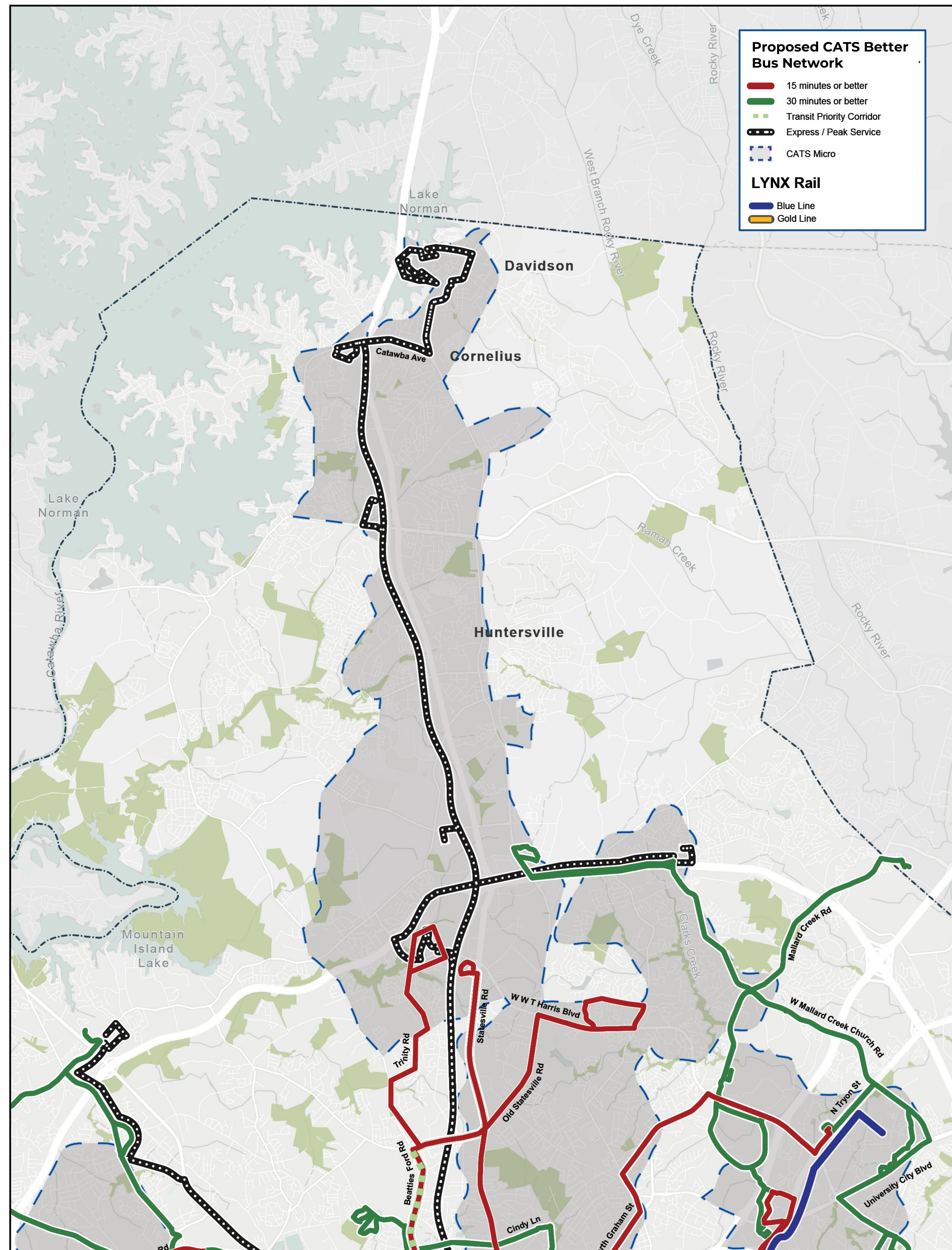
Expanded hours and increased service on express and peak service

Significant investment in service reliability through transit signal priority with a focus on Central Ave, Beatties Ford Rd, Monroe Rd, Freedom Dr, and South Tryon St

Fully implement CATS Micro program, increasing CATS service area by over 100 square miles



North Mecklenburg



North Charlotte

- **Priority bus corridors with signal priority and enhanced stops**
 - Beatties Ford Rd corridor
- **Five routes improved to 15-minute or better frequency**
 - LaSalle St / Norris Ave (3)
 - Beatties Ford Rd (7)
 - N Tryon St (11)
 - Statesville Rd (21)
 - Graham St (22)
- **Improved express frequency with midday service**
 - Northlake / Prosperity Village (53X)
- **CATS Micro zones serving:**
 - Derita / Nevin
 - Hidden Valley
 - Prosperity Village
 - University Area
- **CATS Micro zone currently serving:**
 - Northlake

Davidson, Cornelius, and Huntersville

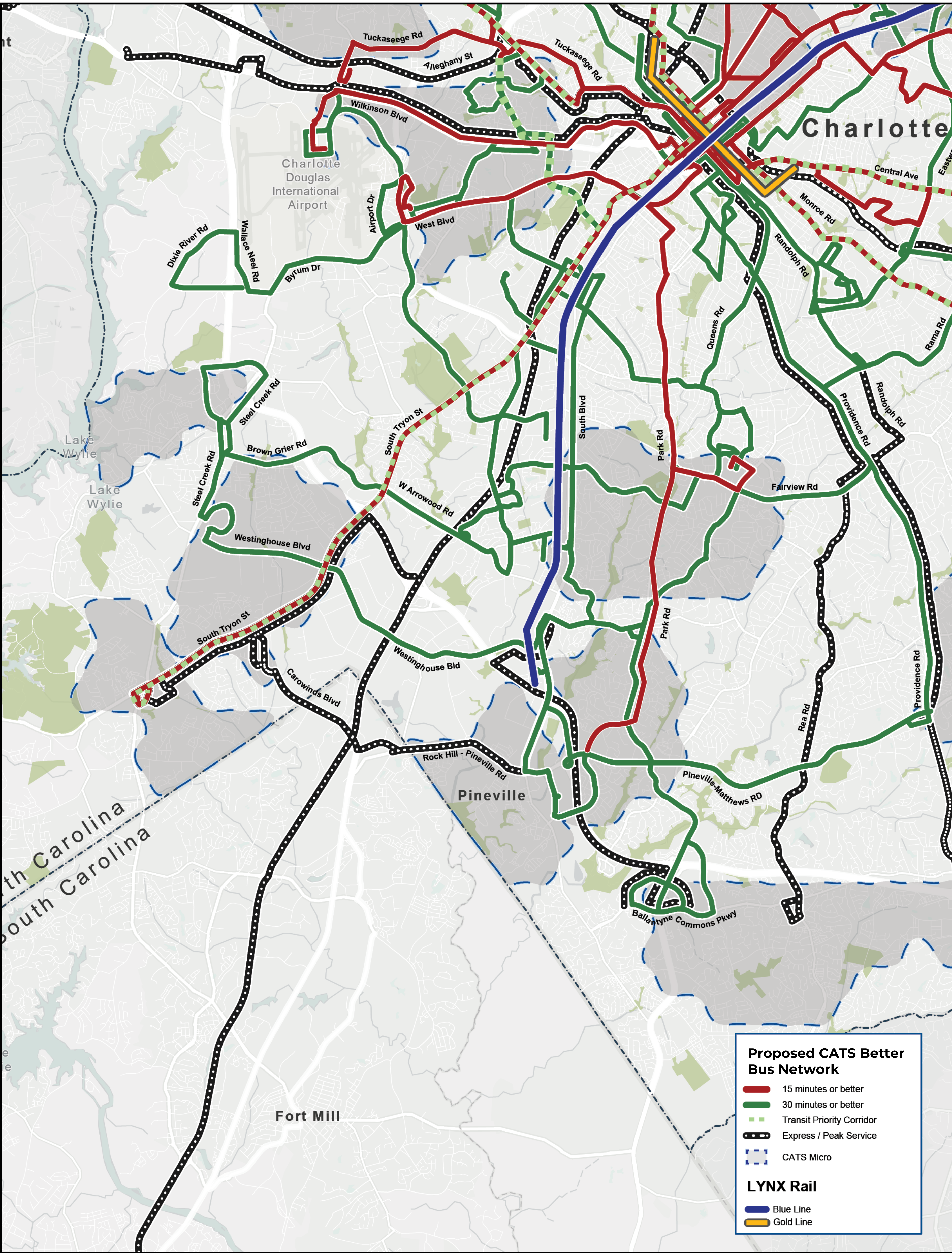
- **Improved express frequency with midday service**
 - Huntersville (48X, 63X)
 - Cornelius / Davidson (77X)
 - New Hambright Park and Ride
- **CATS Micro zone currently serving:**
 - All Downtowns, Davidson College, Circles 30, Catawba Ave, Birkdale Village, Northcross, Bryton Town Center, CATS Park and Rides

North Mecklenburg

- **All routes improved to 30-minute or better frequency**
- **Major expansion of bus stop amenities**



South Mecklenburg



South Charlotte

- **Priority bus corridors with signal priority and enhanced stops**
 - S Tryon St
- **Two routes improved to 15-minute or better frequency**
 - S Tryon St (16)
 - Park Rd (19)
- **Improved express frequency with midday service**
 - Steele Creek (41X)
 - Providence Rd (61X)
 - Rea Rd (62X)
 - New Ballantyne Express
- **CATS Micro zones serving:**
 - Ballantyne
 - Park Crossing
 - Starmount / Quail Hollow
 - Steele Creek

Pineville

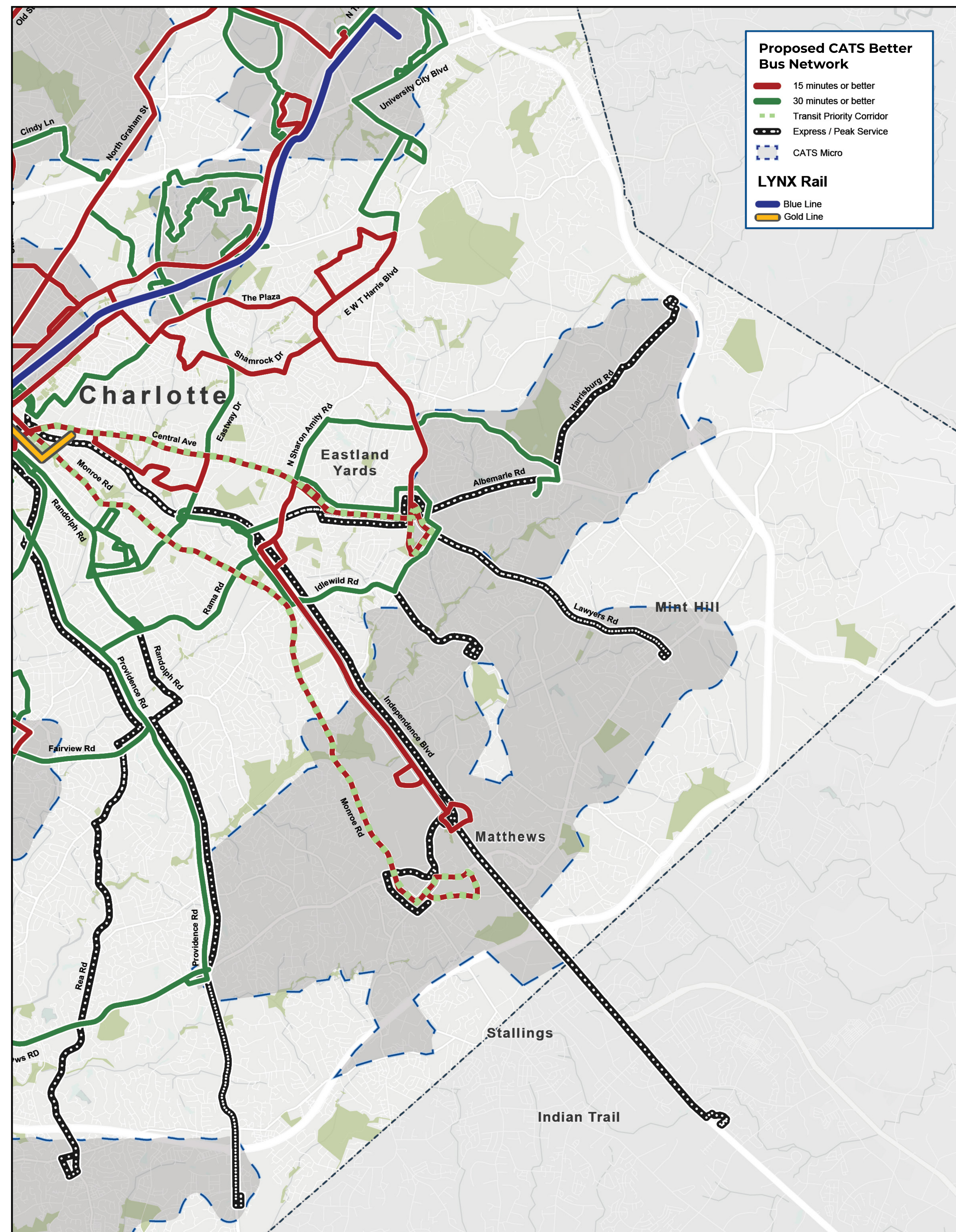
- **One route improved to 15-minute or better frequency**
 - Park Rd (19)
- **CATS Micro zone serving:**
 - Downtown Pineville, Carolina Place Mall, Highway 51, Park Rd

South Mecklenburg

- **All routes improved to 30-minute or better frequency**
- **Major expansion of bus stop amenities**



East Mecklenburg



East Charlotte

- **Priority bus corridors with signal priority and enhanced stops**
 - Central Ave
 - Monroe Rd
- **Five routes improved to 15-minute or better frequency**
 - The Plaza / WT Harris (3)
 - Central Ave (9)
 - Commonwealth / Independence (17)
 - Shamrock (23)
 - Monroe Rd (27)
- **Improved express frequency with midday service**
 - Lawyers Rd (40X)
 - Harrisburg Rd (46X)
 - Idlewild Rd (52X)
- **CATS Micro zones serving:**
 - Albemarle Rd, Harrisburg Rd, Independence Blvd, Lawyers Rd

Matthews

- **Priority bus corridor with signal priority and enhanced stops**
 - Monroe Rd / John St
- **Two routes improved to 15-minute or better frequency**
 - Independence Blvd (17), Monroe Rd / John St (27)
- **Improved express frequency with midday service**
 - Matthews (64X)
- **CATS Micro zones serving:**
 - CPCC Levine, Brace YMCA, Downtown Matthews, Windsor Square

Mint Hill

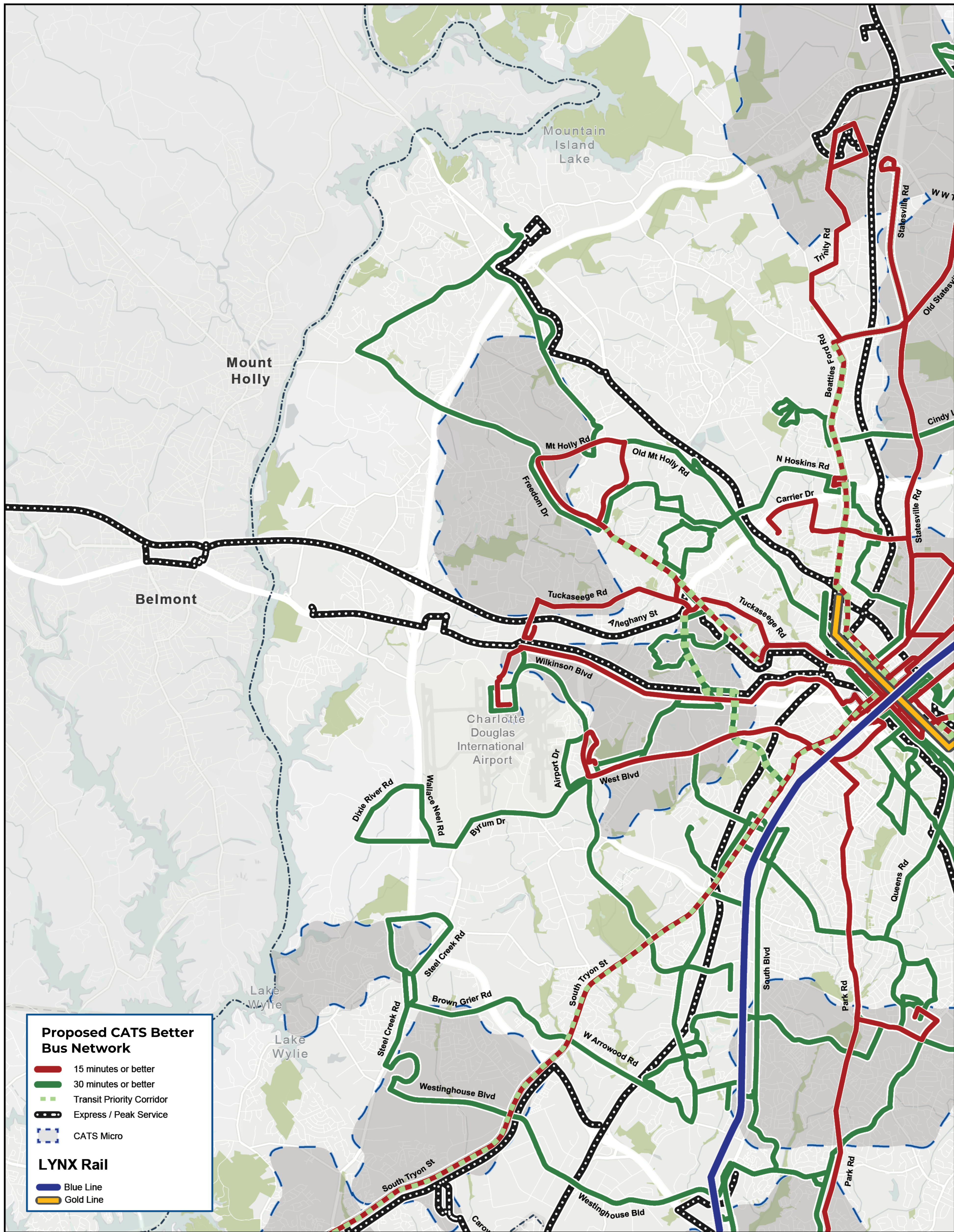
- **Improved express frequency with midday service**
 - Lawyers Road (40X)
- **CATS Micro zones serving:**
 - Matthews-Mint Hill Rd, Lawyers Rd

East Mecklenburg

- **All routes improved to 30-minute or better frequency**
- **Major expansion of bus stop amenities**



West Mecklenburg



West Charlotte

- Major expansion of bus stop amenities as well as development of a mobility hub at Freedom Dr and Ashley Rd
- **Priority bus corridors with signal priority and enhanced stops**
 - Ashley Rd
 - Beatties Ford Rd
 - Freedom Dr
 - Remount Rd
 - S Tryon St
- **Six routes improved to 15-minute or better frequency**
 - Wilkinson Blvd / Morehead St (Sprinter Airport)
 - Beatties Ford Rd (7)
 - Tuckaseegee Rd (8)
 - West Blvd (10)
 - S Tryon St (16)
 - Freedom Dr (34)
- **Improved express frequency with midday service**
 - Steele Creek (41X)
 - Mountain Island (88X)
- **CATS Micro zones serving:**
 - Ashley Park
 - Coulwood
 - Paw Creek
 - Steele Creek
 - West Blvd
- **All routes improved to 30-minute or better frequency**
- **Major expansion of bus stop amenities**
 - Extension of service to the River District



Improvements to Travel Experience

On-demand: Fully implement CATS Micro program across the county, unconstrained by fixed routes or schedules.

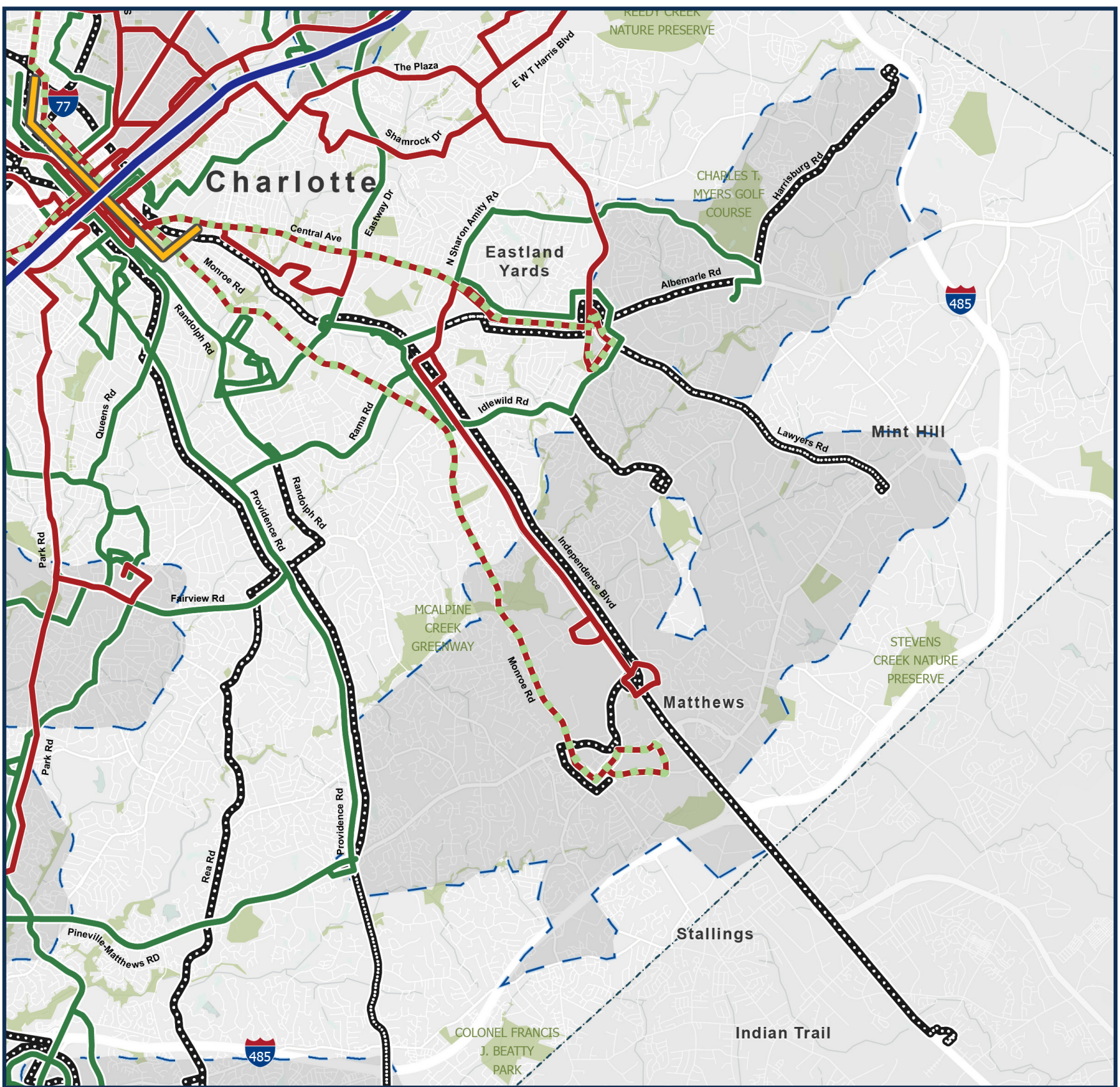


Up to 50 miles of transit priority:

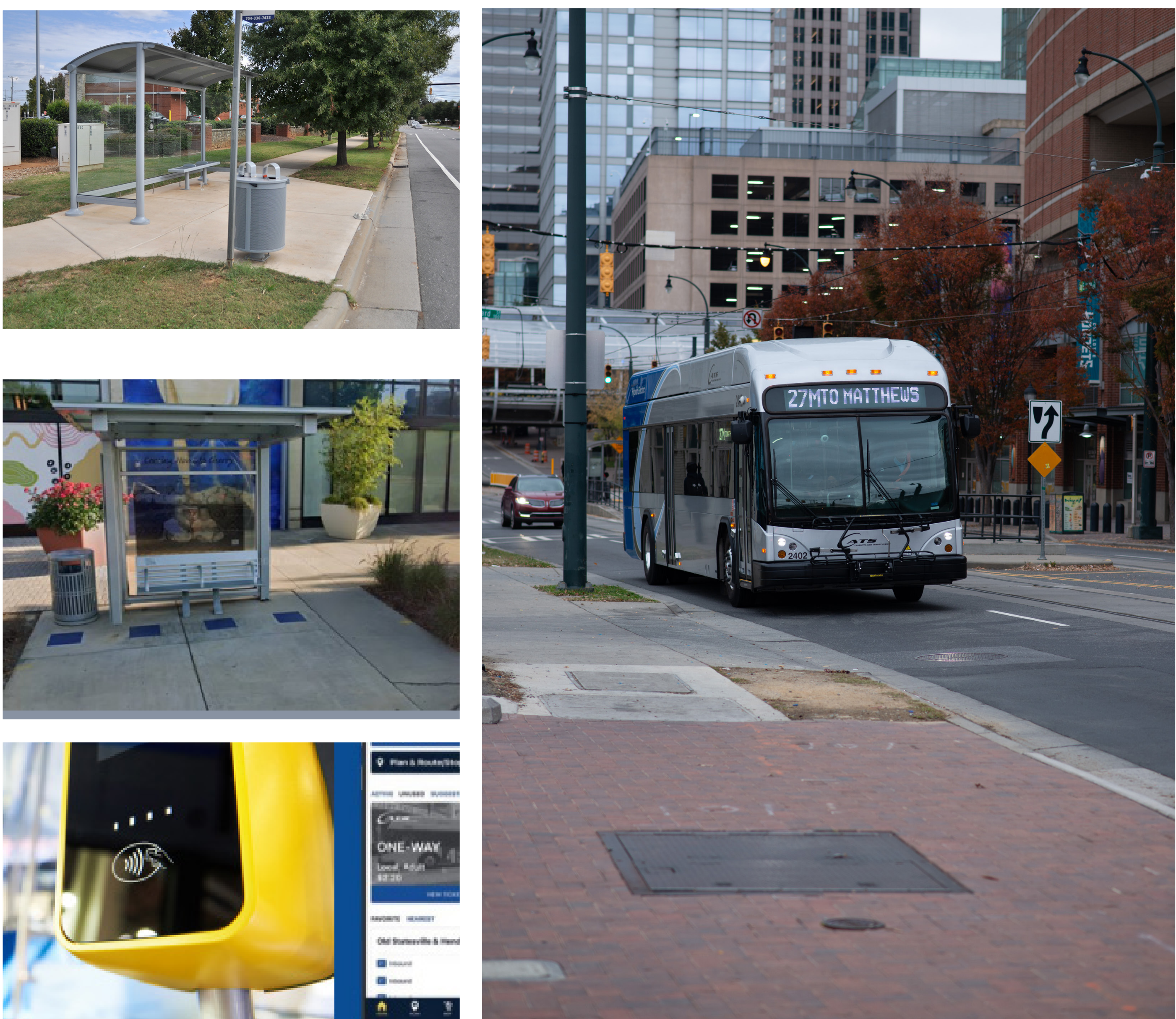
- Service will be optimized on our most popular bus routes by concentrating on passenger amenities and bus stop locations
- Significant investment in service reliability through transit signal priority with a focus on Central Ave, Beatties Ford Rd, Monroe Rd, Freedom Dr, and South Tryon St.



Leverage express lanes to deliver increased **express service** to Ballantyne, as well as communities along Albemarle Rd and Independence Blvd.



From stop to seat: Improvements at bus stops will include 2,000 additional shelters, benches, and waiting pads across the system in 10 years



One trip connected in more ways: The proposed network will use mobility hubs to connect people between trip choices and trip types.



Comfort and reliability: Comprehensive bus fleet expansion and replacement, including 89 new buses.

