

Over 4 miles of visible walls include relief designs inspired by a combination of textile patterns and indigenous Carolina insectivores and orchids, resulting in 17 different hand rendered designs. For the 4 project bridges, Braaksma added her bright green Leaf Rollings, and Pitcher Plant support two project bridges.

COVER: Northeast Corridor/Walls and Bridges  
Carolyn Braaksma, Various Titles

Charlotte Area Transit System's LYNX Blue Line provides quality light rail service to the Charlotte region. By committing one percent of the design and construction budget to its Art in Transit program, CATS builds visual public spaces that enhance the public's experience. Twenty-seven artists, commissioned to incorporate art along the LYNX Blue Line, interacted with communities, neighbors, planners, architects, engineers, and numerous project contributors to create a light rail system unique to Charlotte. Using this self-guided brochure, CATS invites you to discover, contemplate and connect with the LYNX Blue Line public art at the 26 stations along the line. This guide highlights each transit station and the contributions of each artist.



**UNC Charlotte Main**  
Mikyong Kim, *The Nexus Project*

Kim's art is in the spirit of university learning and flux. Her 100' of undulating, perforated stainless steel sculptural seating is surrounded by motion activated colored lighting, altering the landscaped plaza where people await the trains. Her art glass and metal columns on the platform expand her time concept within the station environment.



**Carolyn Braaksma, Carolina Chintz, Calico Kudzu, Zebra Plantain, Drosera Gingham** - Retaining walls



**JW Clay Blvd./UNC Charlotte**  
Susan Brenner, *Red Tree*

Brenner's art is fused into the glass of the stair towers leading to the JW Clay Blvd. and University City Blvd. station platforms. Her art evokes cellular and tree forms tied to the circulatory nature of light rail moving people.



**Jackie Chang, (T)HERE**, windscreen glass, column cladding, platform inlays

**Carolyn Braaksma, Charlotte Challis** - Tunnel wall, *Sarracenia Gingham, Zebra Plantain, Leaf Rolling, Pitcher Plant* bridge piers - WT Harris Blvd. bridge



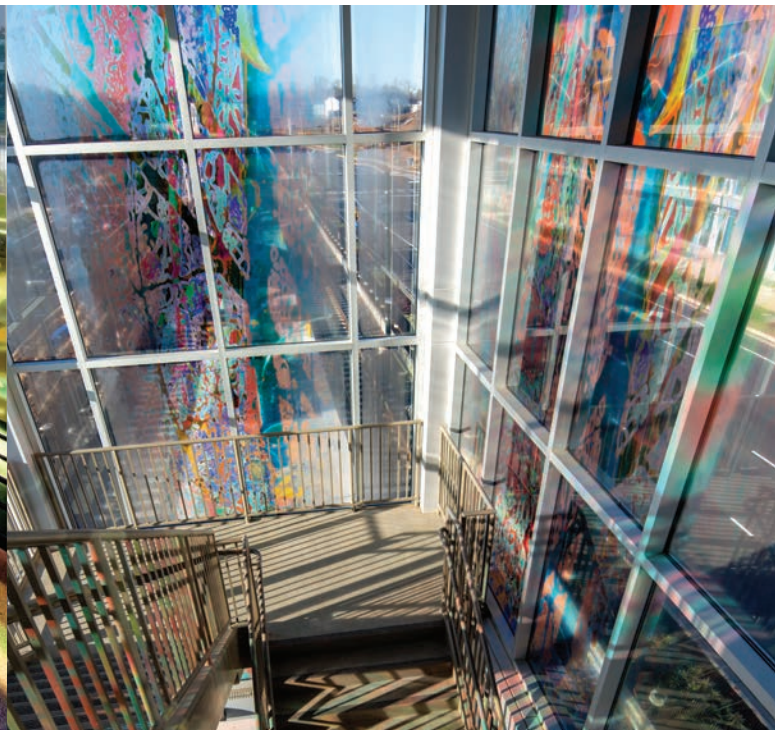
**McCullough**  
Shaun Cassidy, *Ebb and Flow*

Cassidy expands upon his leaf motif found in the southern corridor art with natural elements. Etched windscreens, canopy columns, two *Leaf Shadow Benches* and flowing stainless steel art fencing were designed by the artist. Cassidy also designed bus shelter windscreen glass.



**University City Blvd.**  
Jackie Chang, *(W)HERE*

The conceptual art of Jackie Chang is at two stations, with subtle differences between them played out in words: *WHERE, THERE, HERE*. In the shelters, below the feet of passengers awaiting trains, are the artist's stylized topographical maps designating *HERE*. Each orients a person with a compass rose set in the map. Chang's glass art at UCB focuses on foliage and birds, while at JW Clay she is more literal, highlighting the NC coast, the Piedmont, and the mountains.



**Susan Brenner, Waterfall**, stair tower glass

**Carolyn Braaksma, Drosera Gingham, Zebra Plantain, Leaf Rolling** - University City Blvd. bridge



**Tom Hunter**  
Tom Stanley, *A Place Called Home*

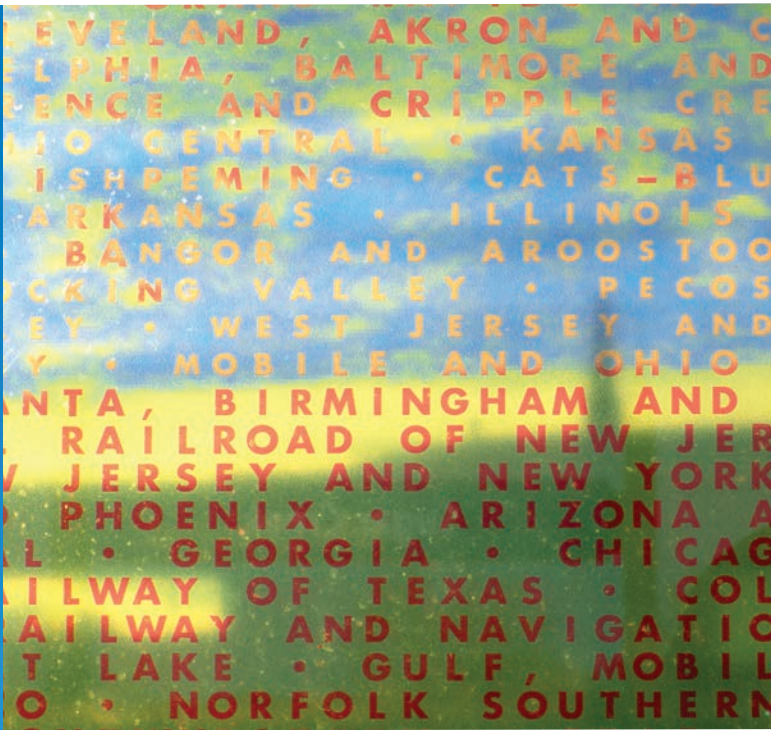
Stanley's art is a result of his interaction with Martin Luther King Jr. Middle School and Hidden Valley Elementary students and their concepts of "home." The artist utilized the students' drawings and words in his windscreen glass and canopy columns. His art fencing and two art benches reference pyramidal house tops.



**Old Concord Road**  
Chandra Cox, *Nature's Sanctuary*

The woodland bird habitat neighboring the station at Eastway Park influenced Cox's station art, including a 250' *Birds & Cattail Fence* set in a berm of ornamental grasses and flowers. Native critters become large in the etched windscreen glass and canopy columns.

**Carolyn Braaksma, Drosera Gingham, Zebra Plantain, Leaf Rolling, Pitcher Plant bridge piers - Old Concord Rd. bridge**



**Sugar Creek**  
Chandra Cox, *Locomotion*

Influenced by freight train activity parallel to the light rail station, Cox references heavy rail through her kinetic finials atop the canopies and locomotive imagery in her windscreen glass. In the canopy metal column cladding she uses the historic spellings of Sugar Creek. Her 18' high *Orb Lantern* sculpture is inspired by a train switch and sited between the station platform and parking garage.



# Art in Transit

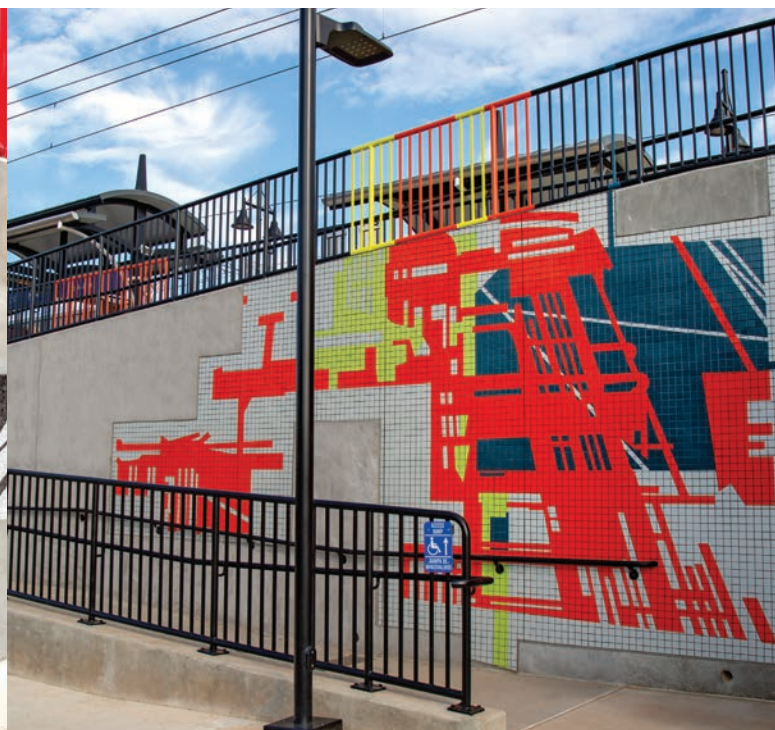
Charlotte Area Transit System



**36th Street**  
Ruth Ava Lyons & Paul Sires, *Welcome to Nodaland*

Red is the artists chosen signature color for the station's metal work, including the canopy steel, light poles, and fencing to signify the eclectic NoDA neighborhood. Their art recognizes the area's growth with industrial and organic imagery in the canopy windscreen glass, metal column cladding, and small glass mosaics set in the wall approaching the platform. Sires' carved granite bench is sited at street level.

**Paul Sires, Abide** - Granite bus bench  
**Carolyn Braaksma, Charlotte Challis** - Curved retaining wall



**25th Street**  
Sharon Dowell, *A City of Optimists*

Dowell's painting style is utilized in the canopy windscreen glass art and column cladding art. Ten mosaics and color added to standard benches and railing captures her color palette. Her art content includes Charlotte residents, and she strives to incorporate the "City's energy." Beyond the station, underpasses at 11th St and I-277 along with Signal House #11 include Dowell's color rich murals.

**Carolyn Braaksma, Calico Kudzu** - Retaining wall



**Parkwood**  
Maria Artemis, *Tectonic Suite*

Artemis' art explores the geological events that shaped Charlotte. Her windscreen glass and canopy columns include maps of the Carolinas, and the platform is stamped with fossil shaped arcs and colored glass aggregate.

The artist chose 30 boulders for the adjacent landscape and replaced 4 standard benches with hand carved granite seating.



**9th Street**  
Anna Valentina Murch & Douglas Hollis, *UMBRA*

Charlotte's textile past influenced the artists' modern design of the 10 tensile fabric canopies at the signature station. The curved blue glass windscreens, platform of blue glass aggregate, and curved benches were all chosen by the artists to orchestrate an airy, uplifting experience for riders.

**Sharon Dowell, Halcyon Idyll I & II** - 11th St and I-277 underpass murals, *Coexist* - Signal house wrap



**Bike Parking**  
Darren Goins, *The Geometric Abstract Bicycle (on the horizon) Rack*  
*The Sun Guided the Road Bike Shelter*

Nine stations in the Northeast Corridor have signature bike parking retrofitted with art by Goins along with bike racks designed by him that mimic the form of a bike. The art at each end of the bike canopies gives an illusion of a road approaching the distant horizon.

- UNC CHARLOTTE MAIN
- JW CLAY BLVD
- MCCULLOUGH
- UNIVERSITY CITY BLVD
- TOM HUNTER
- OLD CONCORD ROAD
- SUGAR CREEK
- 36TH STREET
- 25TH STREET
- PARKWOOD
- 9TH STREET
- 7TH STREET
- CHARLOTTE TRANSPORTATION CENTER
- 3RD STREET
- BROOKLYN VILLAGE
- CARSON
- BLAND STREET
- EAST/WEST BOULEVARD
- NEW BERN
- SCALEYBARK
- WOODLAWN
- TYVOLA
- ARCHDALE
- ARROWOOD
- SHARON ROAD WEST
- I-485/SOUTH BOULEVARD



**7th Street**  
Shaun Cassidy, *Ginkgo*

Ginkgo leaves interrupt the fencing between the train tracks, appear on the windscreens and in mosaic on canopy columns. The veins of the fence leaves are neighborhood street maps; the dot indicates the station location.

Alice Adams, *Ginkgo* - 2 low wall reliefs  
Nancy Blum, *Dogwood* - 2 drinking fountain basins  
Hoss Haley, *River Rock* - Bench



**Charlotte Transportation Center/Arena**  
Andrew Leicester, *Bobbins*

Six brick-clad bridge columns mimic the Arena bobbins and continue the artist's focus on Carolina's past textile industry. By switching colors, the *Zig Zag Reversed Twill Weave* paving pattern connects the outdoor platform and interior Transportation Center.

Alice Adams, *Ginkgo* - 2 low wall reliefs  
Nancy Blum, *Dogwood* - 2 drinking fountain basins  
Hoss Haley, *River Rock* - Bench



**3rd Street**  
Jody Pinto, *Light Station*

Translucent green and berry fiberglass canopies and benches add color to the station platform and contrast with the dark and light platform pavers.

Alice Adams, *Ginkgo* - 2 low wall reliefs  
Nancy Blum, *Dogwood* - 2 drinking fountain basins  
Shaun Cassidy, *Dogwood* - 4 track fencing leaves



**Brooklyn Village**  
Alice Adams, *Hornbeam*

Lead artist Alice Adams sparked a thematic approach to corridor art by focusing her art on Charlotte's prolific tree canopy. Forty-seven low cheekwalls along the line incorporate low reliefs of the leaves of Ginkgo, Hornbeam and Skyrocket Oak trees.

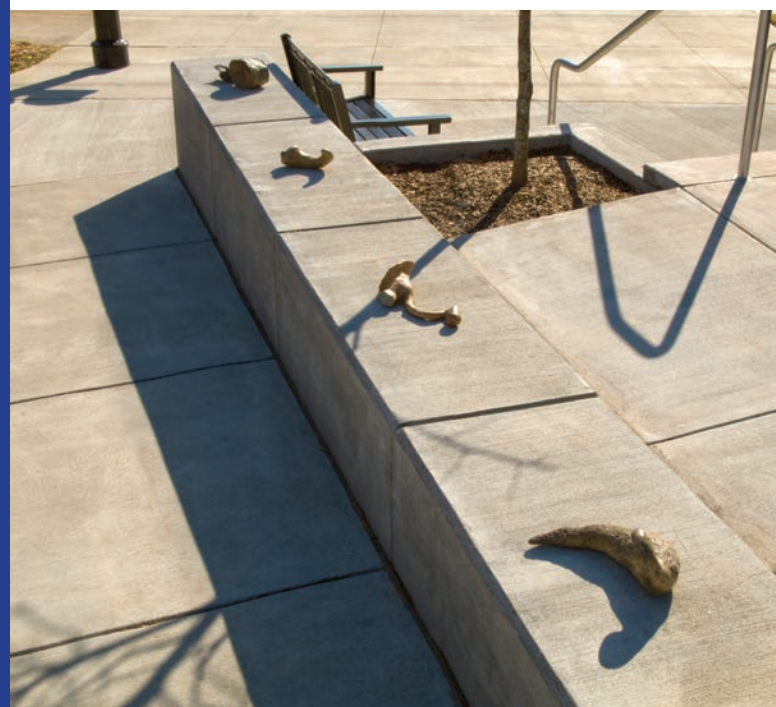
Shaun Cassidy, *Maple* - 4 track fencing leaves  
Leticia Huerta, *Leaves* - Mosaics and windscreens



**Carson**  
Leticia Huerta, *Gold*

Huerta's paving, shelter column cladding, and windscreen art for this and 10 other stations is derived from local history, architecture, industry, and demography. 18th century gold mining inspired her gold nuggets; Carson Boulevard was named after one of the miners.

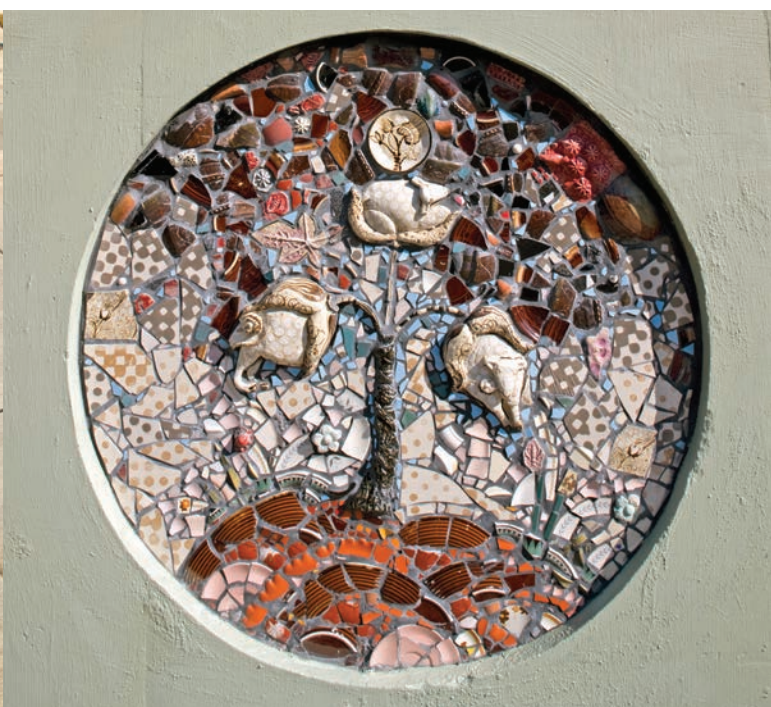
Alice Adams, *Hornbeam* - 4 low wall relief  
Nancy Blum, *Dogwood* - 2 drinking fountain basins  
Shaun Cassidy, *Magnolia* - 4 track fencing leaves



**Bland Street**  
Yuriko Yamaguchi, *Dream Keepers*

*Dream Keepers* are bronze sculptures of somewhat familiar objects in an unusual place, prompting touch and one's imagination.

Alice Adams, *Hornbeam* - 4 low wall reliefs  
Nancy Blum, *Dogwood* - 2 drinking fountain basins  
Shaun Cassidy, *Pin Oak* - 4 track fencing leaves  
Hoss Haley, *River Rock* - Bench  
Leticia Huerta, *Rose* - Pavers, mosaics, windscreens



**East/West Boulevard**  
Thomas Thoune, *Camden Wall*

Plates, vases, glass, and cracked or broken ceramics collected from the community by the artist were recycled into art. Using machine cog shapes for each vignette, the 360' wall captures South End life. One cog includes an illustrated plate of a woman receiving an award for her extraordinary garden from Atherton Mill's owner, opened in 1893.

Alice Adams, *Hornbeam* - 4 low wall reliefs  
Nancy Blum, *Dogwood* - 2 drinking fountain basins  
Shaun Cassidy, *Beech* - 4 track fencing leaves  
Leticia Huerta, *Cotton Plant* - Pavers, mosaics, windscreens  
Leigh Brinkley, *Camden Signal House* - Signal house wrap



**New Bern**  
Hoss Haley, *River Rock*

Aptly titled *River Rock*, Haley's concrete and steel art replaces a standard bench.

Alice Adams, *Skyrocket Oak* - 4 low wall reliefs  
Nancy Blum, *Dogwood* - 2 drinking fountain basins  
Shaun Cassidy, *Willow Oak* - 4 track fencing leaves  
Leticia Huerta, *Renewal* - Pavers, mosaics, windscreens  
Leigh Brinkley, *Number 9* - Traction power substation wrap



**Scaleybark**  
Thomas Sayre, *Furrow*

Molded in Carolina clay, six 18-foot harrow disks and the surrounding landscape honor Scaleybark's agricultural past.

Alice Adams, *Hornbeam* - 4 low wall reliefs  
Shaun Cassidy, *Sweetgum* - 4 track fencing leaves  
Leticia Huerta, *Mexican Bingo* - Pavers, mosaics, windscreens



**Woodlawn**  
Marek Ranis, *Bridge & Wall Enhancements*

Lead artist Marek Ranis chose standard formliners and color to add interest, texture and depth to the corridor bridges and walls.

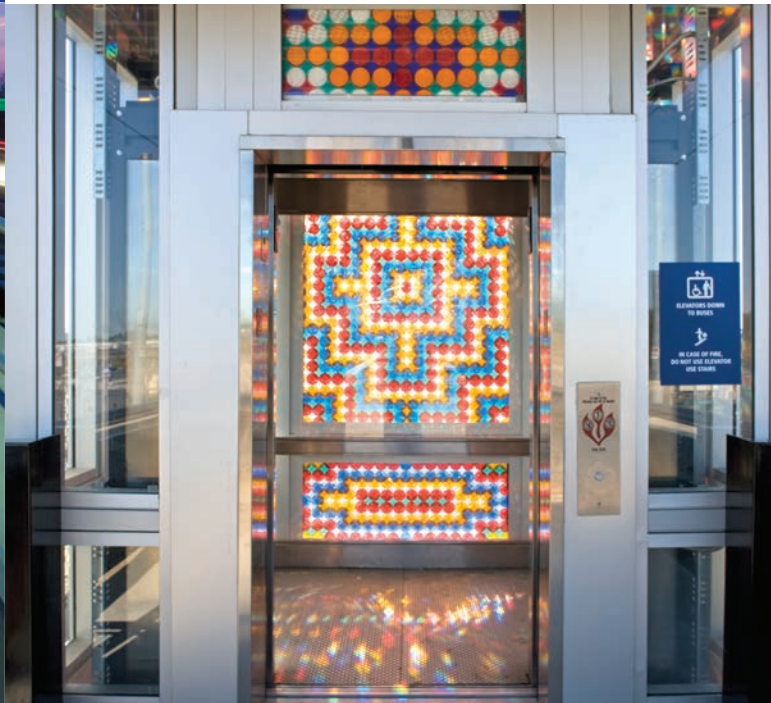
Alice Adams, *Skyrocket Oak* - 4 low wall reliefs, *Samaras* - Sidewalk stamp, *Orchard* - Landscape  
Nancy Blum, *Dogwood* - 2 drinking fountain basins  
Shaun Cassidy, *White Oak* - 4 track fencing leaves  
Hoss Haley, *River Rock* - Bench  
Leticia Huerta, *Leaves* - Pavers, mosaics, windscreens



**Tyvola Station**  
Dennis Oppenheim, *Reconstructed Dwelling*

An inverted pyramid, staircase, wheel, wall, and window corridor make up *Reconstructed Dwelling*, balanced below the platform on a painted floor plan of a neighborhood home.

Alice Adams, *Celtic Calendar* - Landscape  
Nancy Blum, *Dogwood* - 2 drinking fountain basins  
Leticia Huerta, *Textiles* - Pavers and mosaics  
Marek Ranis - Bridge and wall enhancements



**Archdale**  
Richard C. Elliott, *Tower of Light*

An abstract configuration of acrylic reflectors, *Tower of Light*, beckons riders to the station elevator.

Alice Adams, *Planter Bench* - Ground level  
Nancy Blum, *Dogwood* - 2 drinking fountain basins  
Leticia Huerta, *Gingham* - Pavers, mosaics, and windscreens  
Marek Ranis - Bridge and wall enhancements



**Arrowood**  
Alice Adams, *Samaras Stamp*

Small details, a sidewalk stamp based on samaras, or maple seed; a grass border stamped into sidewalks, two shaped concrete benches, scored concrete bus bays and a few specialty landscapes.

Nancy Blum, *Dogwood* - 2 drinking fountain basins  
Hoss Haley, *River Rock* - Bench  
Leticia Huerta, *Catawba Pottery* - Pavers, mosaics, windscreens  
Marek Ranis - Bridge and wall enhancements



**Sharon Road West**  
Marek Ranis, *Bridge & Wall Enhancements*

The artist deviates at one of six stations by using a tree bark texture and brown color beside a pale green and leafy texture to enhance the retaining wall.

Alice Adams, *Skyrocket Oak* - 4 low wall reliefs, *Samaras* - Sidewalk stamp, *Butterfly Circle* - Landscape  
Nancy Blum, *Dogwood* - 2 drinking fountain basins  
Leticia Huerta, *Welcome* - Pavers, mosaics, windscreens



**I-485/South Blvd**  
Nancy Blum, *Dogwood*

Each drinking fountain basin features the dogwood, North Carolina's state flower.

Alice Adams, *Skyrocket Oak* - 4 low wall reliefs, *Landscape*  
Leticia Huerta, *Games* - Pavers, mosaics, windscreens  
Marek Ranis - Bridge and wall enhancements



**Light Rail Vehicles**  
Shaun Cassidy, *Ceiling Art & Seating Fabric*

The Blue Line light rail vehicles include a unique seating fabric and ceiling art that continues the corridor thematic focus on Charlotte's tree canopy and the changing seasons.