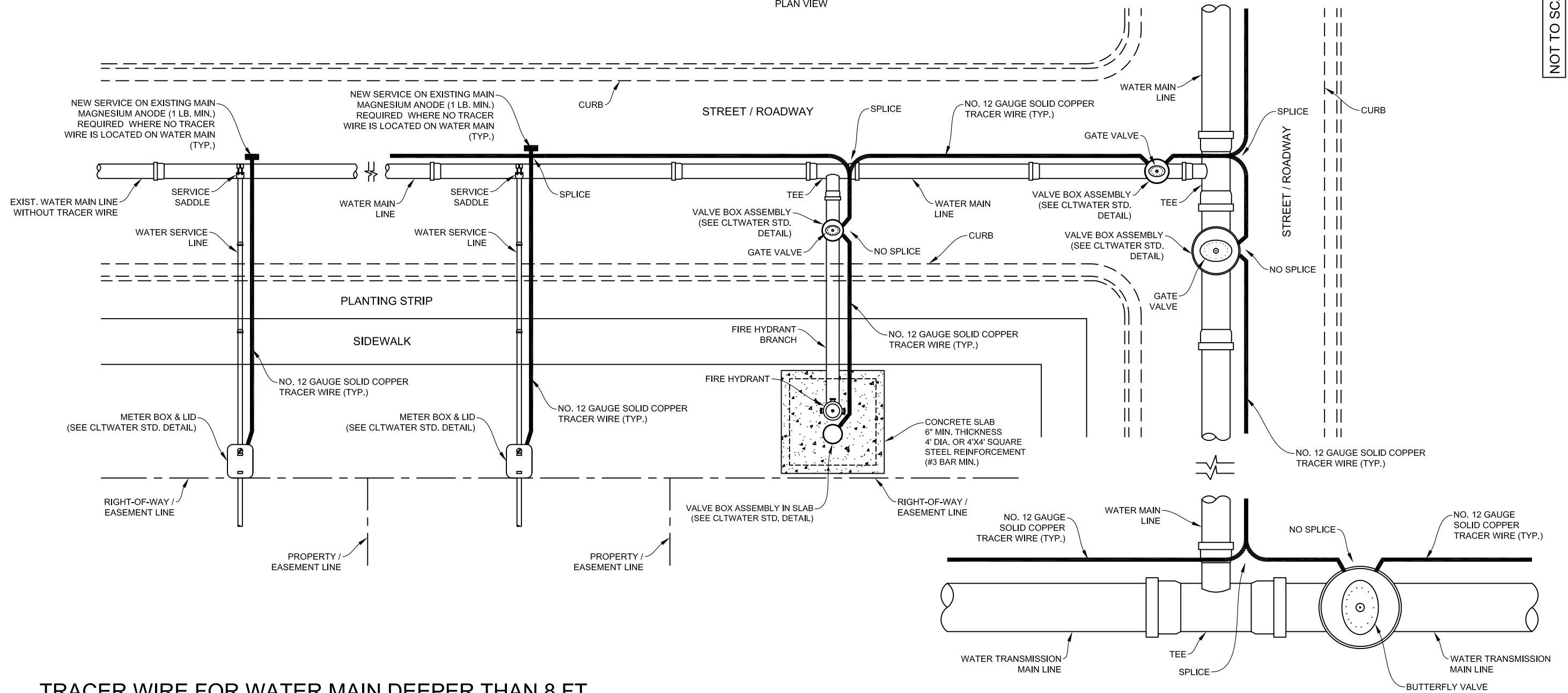


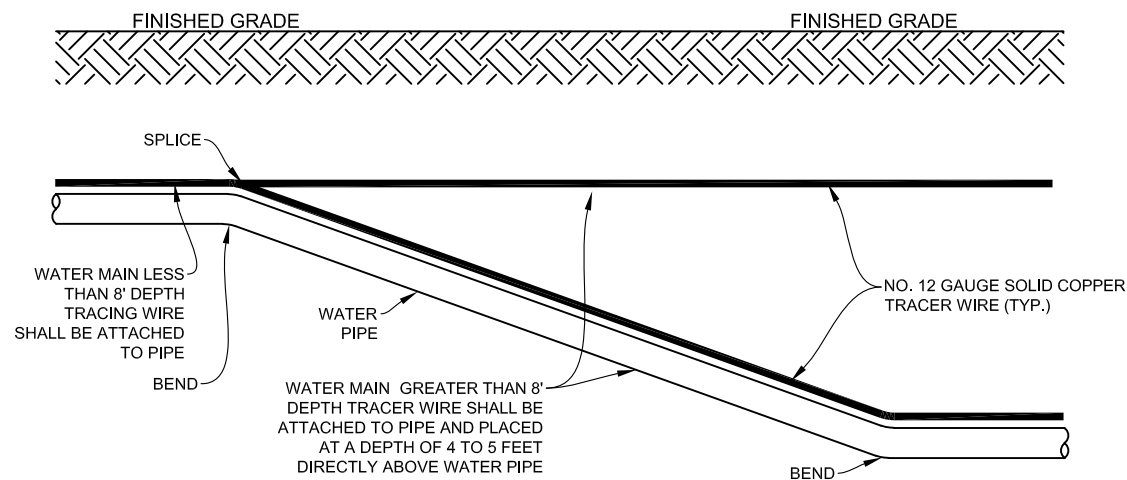
STREET VIEW - WATER MAIN TRACER WIRE

PLAN VIEW



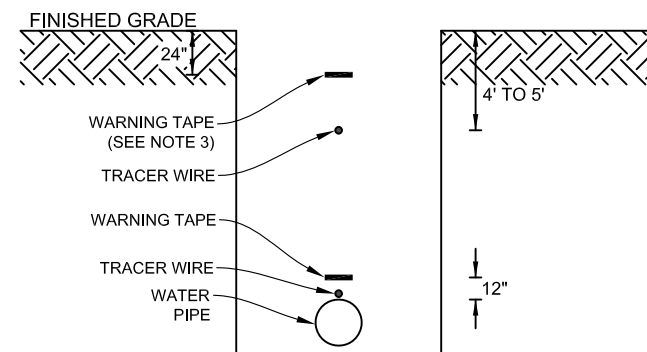
TRACER WIRE FOR WATER MAIN DEEPER THAN 8 FT

SECTION VIEW



TRENCH DETAIL

PROFILE VIEW



NOTES:

1. TRACER WIRE SHOWN AWAY FROM PIPE FOR CLARITY. TRACER WIRE SHALL BE INSTALLED IMMEDIATELY ADJACENT TO THE WATER PIPE. TRACER WIRE SHALL BE FASTENED TO THE PIPE WITH ZIP TIES AT 10 FOOT INTERVALS.
2. TRACER WIRE SHALL BE SOLID COPPER NO. 12 WITH 30 MILS BLUE HDPE INSULATION.
3. WARNING TAPE REQUIRED FOR 16 INCH AND LARGER WATER MAINS ONLY.
4. NEED LOCATOR POST FOR 30 INCH AND LARGER DISTRIBUTION MAINS ONLY.

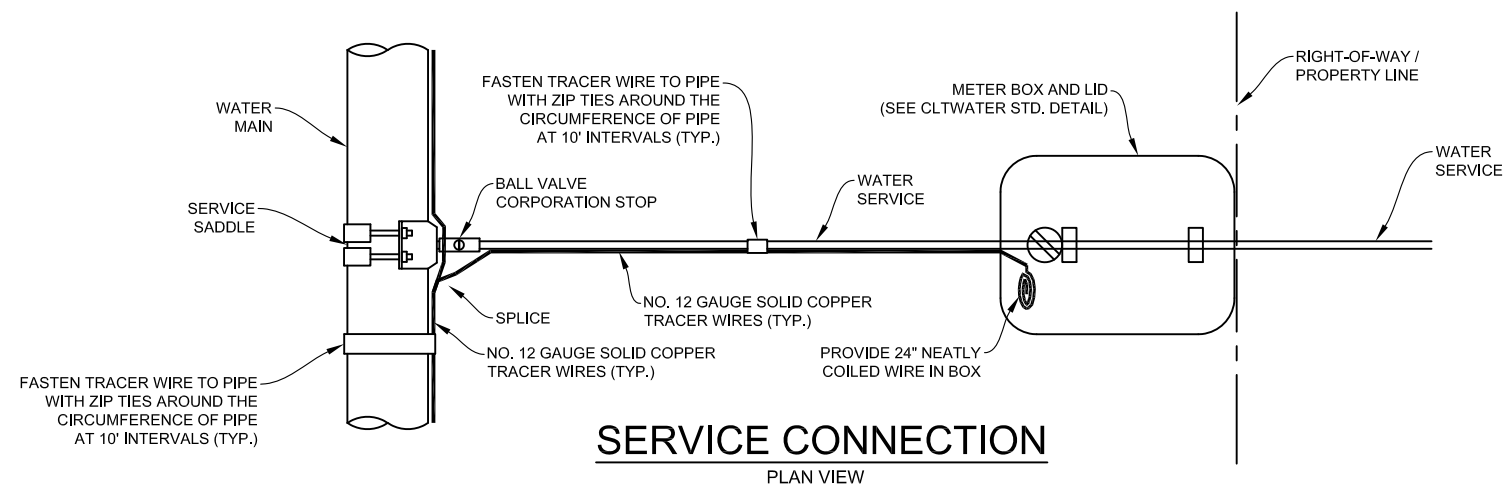
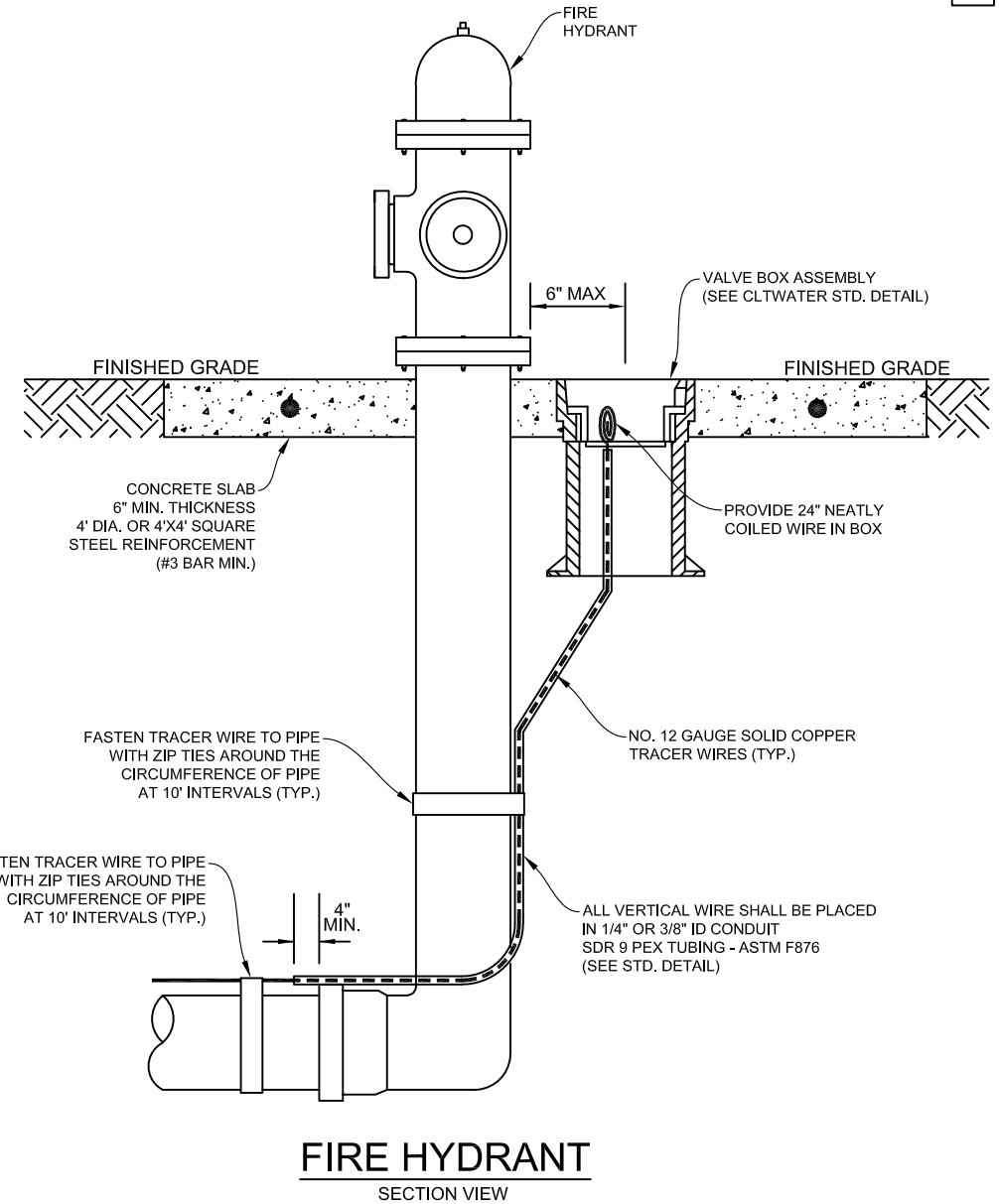
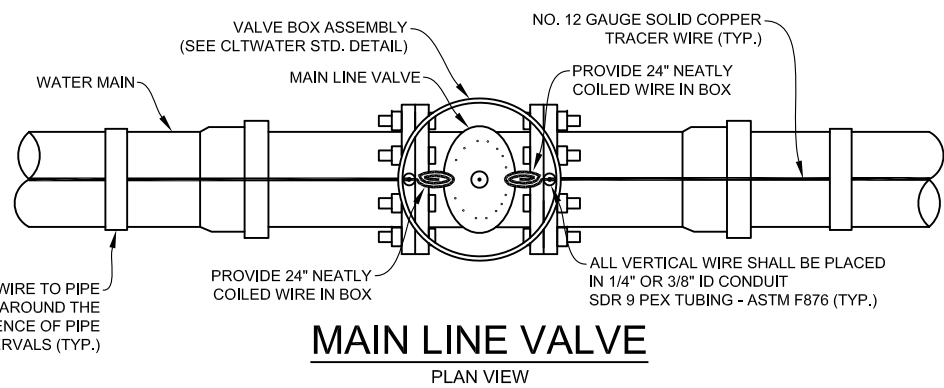
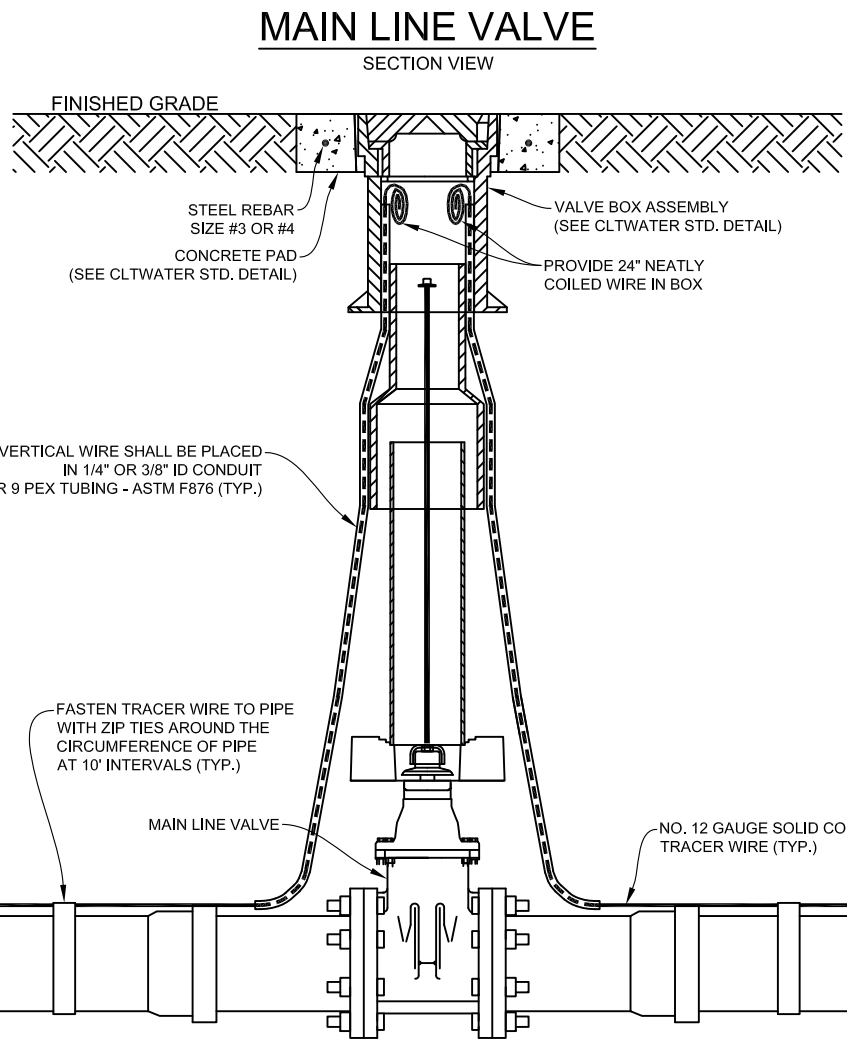
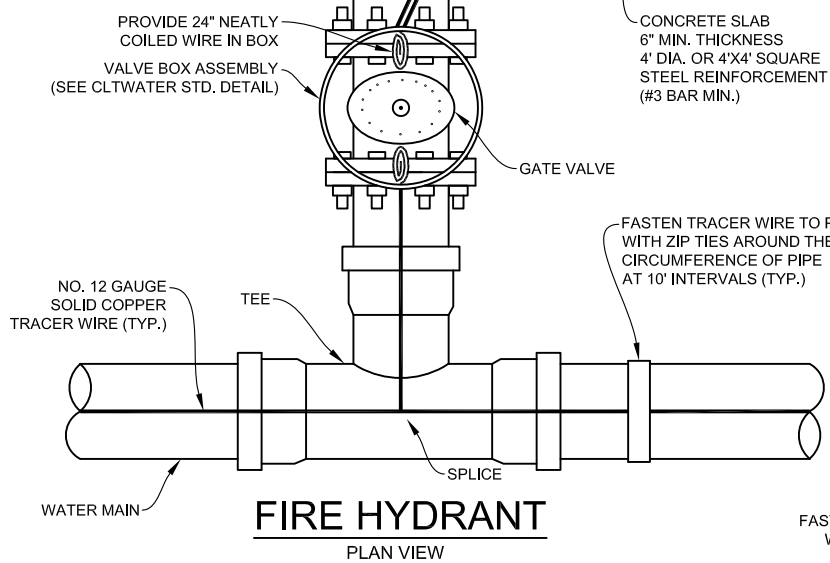
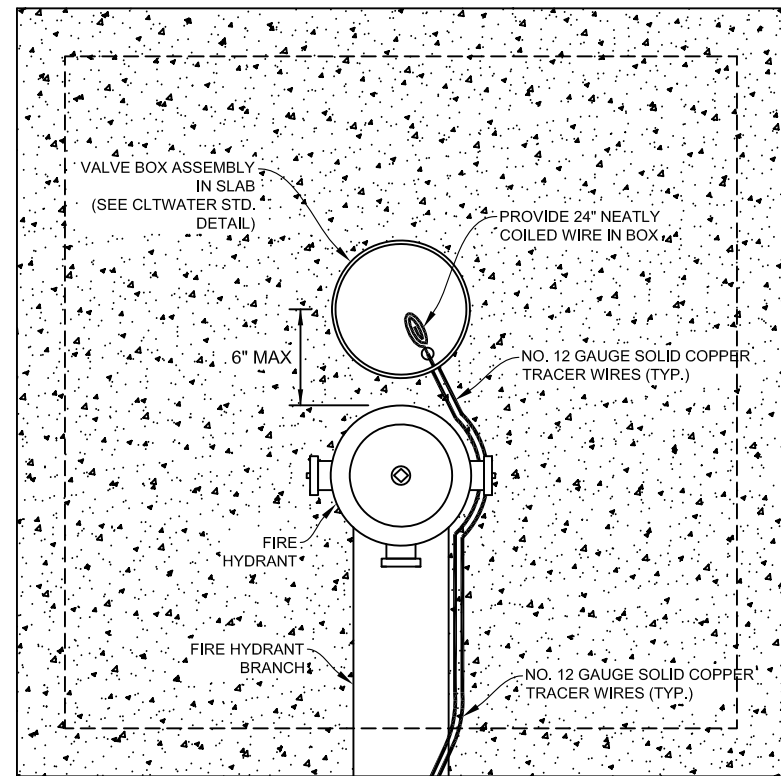
NOT TO SCALE

STANDARD NO. TW1
VERSION NO. 1.0
VERSION DATE 7.21.2017

TRACER WIRE - WATER MAIN

CHARLOTTE WATER
STANDARD DETAILS
WATER





NOTES:

1. TRACER WIRE SHALL BE AWG NO. 12 GAUGE SOLID COPPER WITH 30 MILS BLUE HDPE INSULATION.
2. THE TRACER WIRE SHALL BE CONTINUOUS TO THE GREATEST EXTENT POSSIBLE. WHERE SPLICES ARE NECESSITATED IN THE WIRE, THE SPLICES SHALL BE SECURELY BONDED TOGETHER WITH AN APPROVED INDUSTRIAL CONNECTOR TO PROVIDE ELECTRICAL CONTINUITY. CONNECTOR SHALL BE COPPER AND INSULATION SHALL BE REPAIRED AS DETAILED TO SEAL OUT MOISTURE AND CORROSION AND SHALL BE INSTALLED SO AS TO PREVENT ANY UNINSULATED WIRE EXPOSURE. SEE STANDARD DETAIL TW3.
3. SPLICED CONNECTIONS SHALL BE ALLOWED BETWEEN THE MAIN TRACER WIRE AND THE WATER SERVICE TRACER WIRE.
4. TRACER WIRE SHALL BE PROTECTED FROM DAMAGE DURING THE EXECUTION OF THE WORK. NO BREAKS OR CUTS IN THE TRACER WIRE OR INSULATION SHALL BE PERMITTED.
5. PRIOR TO ACCEPTANCE (POST PUNCH LIST) EACH WIRE SEGMENT SHALL PASS A CONDUCTIVITY TEST, WITNESSED BY THE ENGINEER OR ENGINEER'S REPRESENTATIVE.
6. WHERE 2 OR MORE WIRES ENTER A VALVE BOX ASSEMBLY, (PROVIDE 24 INCHES OF NEATLY COILED WIRE) AFTER ACCEPTANCE TESTING, CONNECT ENDS OF ALL WIRES WITH WATER PROOF WIRE CONNECTOR NUT AND 3" BARE #12 PIGTAIL.
7. SPLICES IN THE PRIMARY TRACER WIRE ALONG THE WATER MAIN SHALL INCLUDE 3 FEET OF SLACK WIRE ON EACH SIDE OF EACH SPLICE.
8. FOR INSTALLING A NEW SERVICE LINE ON AN EXISTING MAIN WITH TRACER WIRE, ONLY SPLICE TO EXISTING WIRE WITH 3 FEET OF SLACK ON NEW SERVICE LINE.

NOT TO SCALE

STANDARD NO. TW2
VERSION NO. 1.0
VERSION DATE 7.21.2017

TRACER WIRE - WATER MAIN

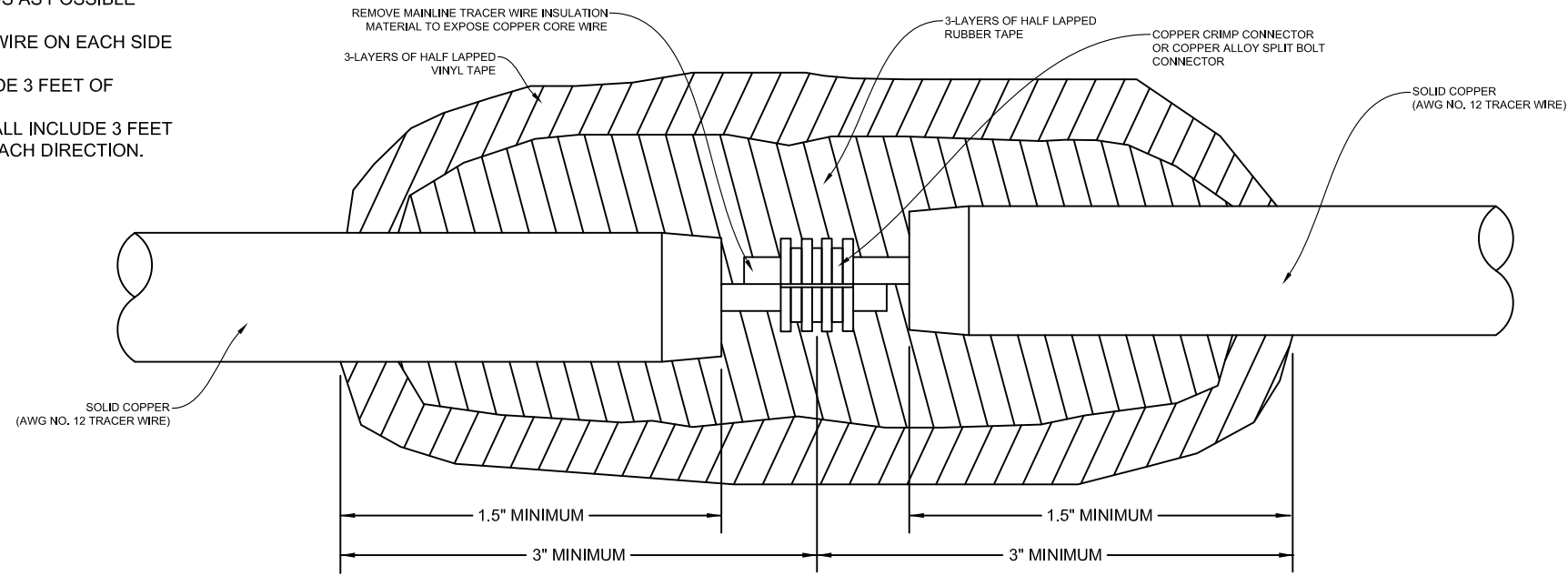
CHARLOTTE WATER
STANDARD DETAILS
WATER



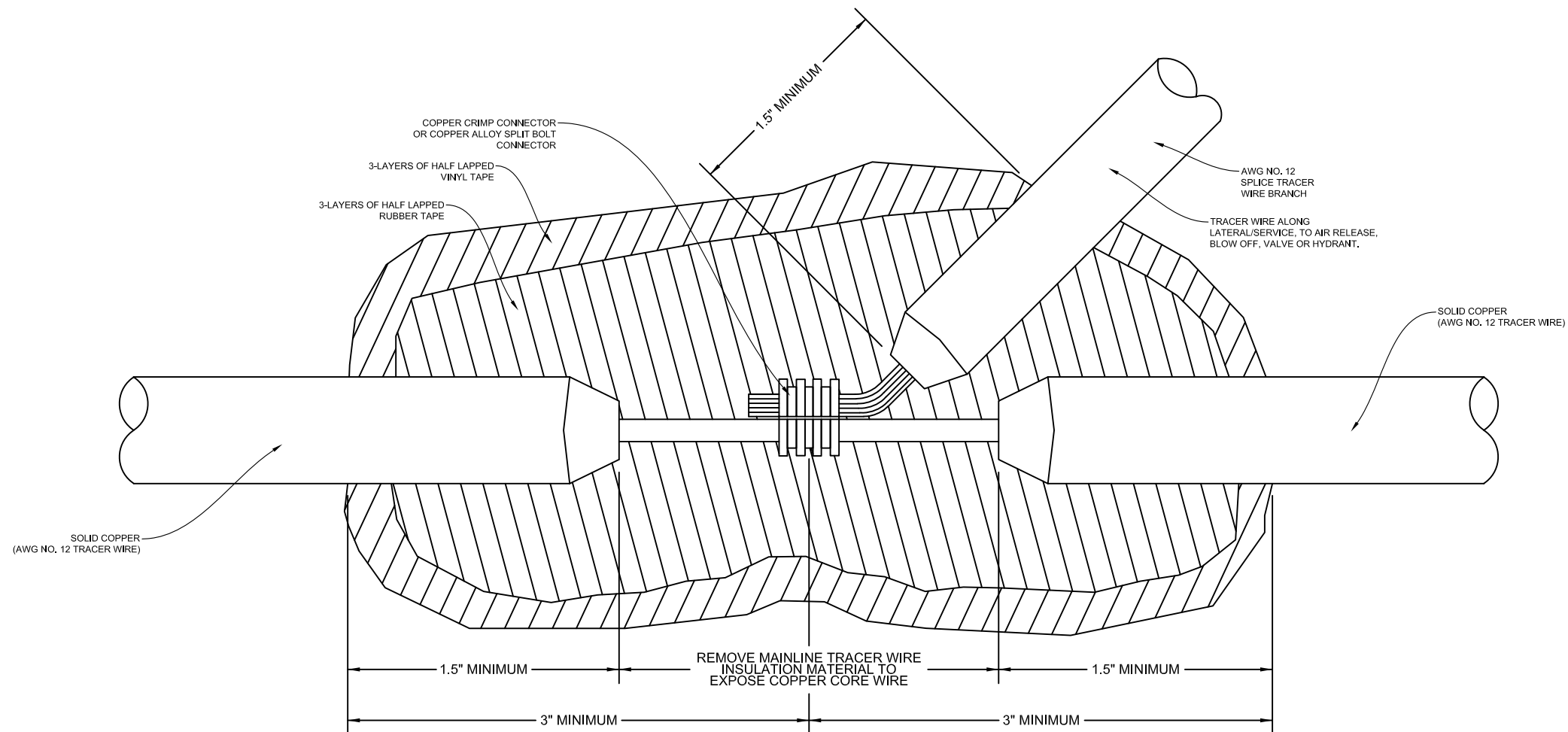
NOTES:

1. IN LINE SPLICES SHALL BE LIMITED TO THE GREATEST EXTENT POSSIBLE. TRACER WIRE SHALL BE AS CONTINUOUS AS POSSIBLE WITHOUT SPLICES.
2. IN LINE SPLICES SHALL INCLUDE 3 FEET OF SLACK WIRE ON EACH SIDE OF EACH SPLICE.
3. BRANCH SPLICES ON EXISTING WIRE SHALL INCLUDE 3 FEET OF SLACK WIRE ON THE NEW BRANCH WIRE.
4. BRANCH SPLICES ON NEW MAIN INSTALLATION SHALL INCLUDE 3 FEET OF SLACK WIRE ON EACH SIDE OF THE SPLICE IN EACH DIRECTION.

IN-LINE OR REPAIR SPLICE



BRANCH IN-LINE SPLICE FOR SERVICE/LATERAL, TEE, CROSS, AIR RELEASE, BLOW OFF, HYDRANT OR VALVE



NOT TO SCALE

STANDARD NO.	TW3
VERSION NO.	1.0
VERSION DATE	7.21.2017

TRACER WIRE - WATER MAIN - SPLICE

CHARLOTTE WATER
STANDARD DETAILS
WATER

