

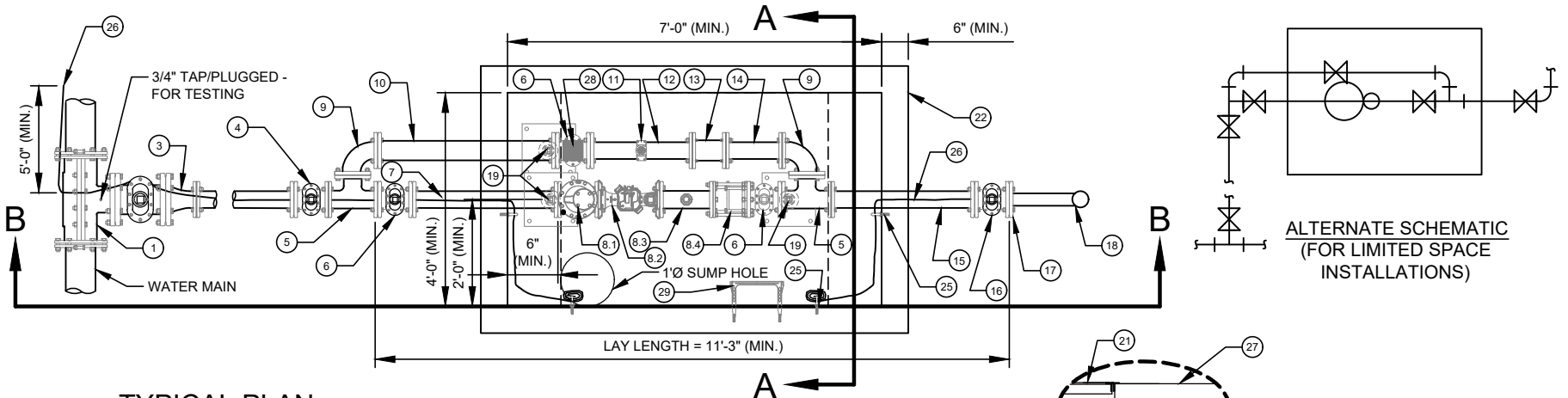
NOTES:

- A. ALL FLANGE HARDWARE (BOLT/WASHER/NUT) SHALL BE STAINLESS STEEL - TYPE 304 WITH ANTI-SEIZE COMPOUND.
- B. ALL PIPE SHALL BE RESTRAINED JOINT DUCTILE IRON FROM TAP TO PROPERTY LINE VALVE.
- C. METER CONFIGURATION AND LENGTH / WIDTH MAY VARY DUE TO BRAND - VERIFY DIMENSIONS TO DETERMINE MINIMUM VAULT SIZE.
- D. VAULT SHALL BE SIZED AS NEEDED FOR MINIMUM CLEARANCE AS SHOWN AND RATED FOR NCDOT HS-20 LOADING - SUBMIT SHOP DRAWINGS / P.E. SEALED FOR REVIEW.
- E. ALL CONCRETE SHALL BE MINIMUM 4,000 PSI COMPRESSIVE STRENGTH.
- F. DESIGN SHALL CONFORM TO ASTM C858 - SPECIFICATIONS FOR "UNDERGROUND PRECAST CONCRETE UTILITY STRUCTURE".

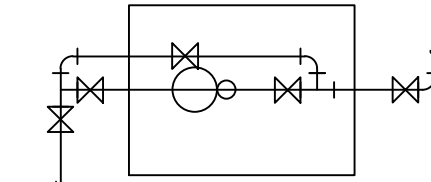
- G. STEEL REINFORCING DESIGN SHALL CONFORM TO ASTM C857.
- H. REBARS SHALL BE GRADE 60 PER ASTM A615.
- I. WELDED WIRE FABRIC SHALL CONFORM TO ASTM A185.
- J. DIAGONAL REINFORCING SHALL BE ADDED AT ALL OPENINGS.
- K. PIPE PENETRATIONS SHALL BE SEALED WITH FLEXIBLE CONNECTORS (MANHOLE BOOTS) OR WITH 8-INCHES OF BRICK & MORTAR (AND 1/2 INCH THICK CONSTRUCTION EXPANSION MATERIAL).
- L. FRAME TO BE FLUSH WITH GROUND OR CONCRETE SIDEWALK, GROUND SHALL SLOPE AWAY FROM VAULT.
- M. ALL JOINTS SHALL BE MADE WATERTIGHT USING 2 RINGS OF BUTYL RUBBER JOINT MASTIC.
- N. ALL VALVES SHALL BE OPEN RIGHT - CLOCKWISE, EXCEPT NO. 16.

NO. DESCRIPTION:

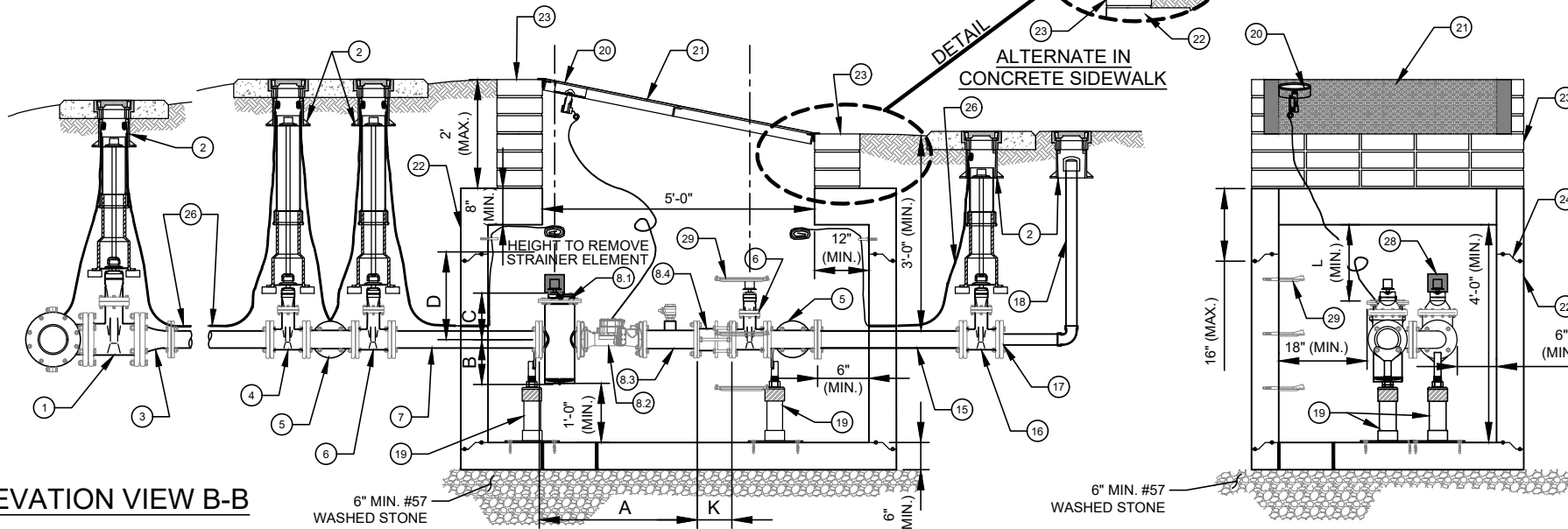
1. 4" TAPPING SLEEVE AND 4" FL x MJ TAPPING VALVE ON EXISTING MAIN. 3" MECHANICAL JOINT OUTLET TEE, 3" FOSTER ADAPTOR, AND 3" MJ GATE VALVE ON NEW MAIN. WHEN THE NEW MAIN IS LARGER THAN 12", USE A 6" SWIVEL TEE, 6" MJ GATE VALVE, 6" FOSTER ADAPTOR, AND 6" x 3" MJ REDUCER. STANDARD VALVE BOX ASSEMBLY (TYPICAL) - ALL VALVES.
2. 4" FOSTER ADAPTOR, 4" x 3" REDUCER (RMJ) REQUIRED ON EXISTING MAIN INSTALLATIONS.
3. 3" MJ x FL DUCTILE IRON ADAPTER ON SHORT SIDE SERVICE (NOT SHOWN), 3" MJ x FL GATE VALVE ON LONG SIDE SERVICE (SHOWN).
4. 3" ALL FLANGE DUCTILE IRON TEE.
5. 3" ALL FLANGE GATE VALVE.
6. 3" ALL FLANGE DUCTILE IRON PIPE SPOOL - L = 30" (MIN.) (SPECIAL CLASS 53).
7. 3" ULTRASONIC WATER METER ASSEMBLY (FLANGE x FLANGE).
- 8.1. BERMAD OR BADGER FIRE RATED BASKET STRAINER (FL x FL) - LL = 9.8 INCHES (BERMAD MODEL FP-60F-D) OR LL = 14.25 INCHES (BADGER MODEL 7000 AFSS FIRE SERVICE STRAINER).
- 8.2. 3-INCH MASTER METER OCTAVE OR BADGER E-SERIES ULTRASONIC WATER METER WITH ITRON W100 TRANSMITTER - LL = 12 INCHES.
- 8.3. 3" EPOXY COATED/LINED STEEL FL x FL SPOOL WITH 2" FNPT TEST OUTLET - LL = 12 INCHES (MARS CO.) AND 2" BALL CORPORATION STOP WITH T-HEAD OPERATING NUT - MNPT x FNPT.
- 8.4. ROMAC D 3400 DISMANTLING JOINT - LL = 7 TO 9 INCHES, SET TO 8 INCHES OR SMITH-BLAIR MODEL 975 DISMANTLING JOINT (RESTRAINED) - LL = 8 TO 10 INCHES, SET TO 9 INCHES.
9. 3" DUCTILE IRON 90° BEND FLANGE x FLANGE.
10. 3" DUCTILE IRON PIPE - FLANGE x FLANGE SPOOL (SPECIAL CLASS 53) - L = 43.5" (MIN.) (WHEN USING BERMAD STRAINER) OR L = 39" (MIN.) (WHEN USING BADGER STRAINER).
11. 3"x1.5" SERVICE SADDLE WITH 1.5" BALL CORPORATION STOP WITH T-HEAD OPERATING NUT - CC - TAPER THREAD x FNPT.
12. 3" DUCTILE IRON PIPE - FLANGE x PE - L = 24" (MIN.) (SPECIAL CLASS 53).
13. 3" MECHANICAL JOINT DUCTILE IRON LONG PATTERN SOLID SLEEVE WITH RESTRAINED JOINTS.
14. 3" DUCTILE IRON PIPE - FLANGE x PE - L = 12" (MIN.) (SPECIAL CLASS 53).
15. 3" DUCTILE IRON PIPE - FLANGE x PE - L = 30" (MIN.) (SPECIAL CLASS 53).
16. 3" MECHANICAL JOINT (RJ) GATE VALVE - OPEN LEFT AT PROPERTY LINE.
17. 3" MECHANICAL JOINT PLUG WITH 2" TAP (FNPT).
18. 2" TEMPORARY BLOW OFF ASSEMBLY (GALV. STEEL (SCH 80) OR RED BRASS (SCH 40) - END WITH THREADED COUPLING). GALV. STEEL OR S.S. ADJUSTABLE FLANGE PIPE SUPPORTS (NUMBER REQUIRED = 3) (WITH STAINLESS STEEL ADHESIVE ANCHORS).
19. AMR TRANSMITTER.
20. 4 FT x 5 FT ACCESS DOOR - SEE STD. DETAIL.
21. PRECAST REINFORCED CONCRETE VAULT - 7 FT x 4 FT x 4 FT (MIN.) (LxWxD). SEE NOTES C AND D.
22. MINIMUM OF THREE STD. SOLID CONCRETE BRICK COURSES (OR PRECAST RISER) UNDER ACCESS DOOR FRAME - MAX. 2 FT. JOINT REQUIRED AT FLAT TOP SECTION.
23. 3/8" DIA. GALV. STEEL EYE BOLT (EPOXY ADHESIVE ANCHOR) - TYPICAL.
24. AWG #12 GAUGE SOLID COPPER TRACER WIRE - WITH BLUE INSULATION (30 MILS H.D.P.E.) TERMINATE WITH 24" EXCESS WIRE (COILED) AT EYE BOLT AND VALVE BOX (TYPICAL).
25. CAST IN PLACE CONCRETE SIDEWALK - BRICKWORK SHALL NOT EXTEND TO SURFACE. ACCESS DOOR FRAME SHALL REST ON SIDEWALK.
26. VALVE LOCK (FURNISHED BY CLTW) - LOCK VALVE CLOSED.
27. PLASTIC STEP - 12" O.C. VERTICAL SPACING.



TYPICAL PLAN



ALTERNATE SCHEMATIC (FOR LIMITED SPACE INSTALLATIONS)



ELEVATION VIEW B-B

SECTION VIEW A-A

METER SIZE	A	B	C	D	K	L
3"	BERMAD = 33.8" BADGER = 38.25"	BERMAD = 6.3" BADGER = 10"	BERMAD = 5.9" BADGER = 10.625"	BERMAD = 23.1" BADGER = 31.25"	SMITH-BLAIR = 9" ROMAC = 8"	BERMAD = 20" BADGER = 14"