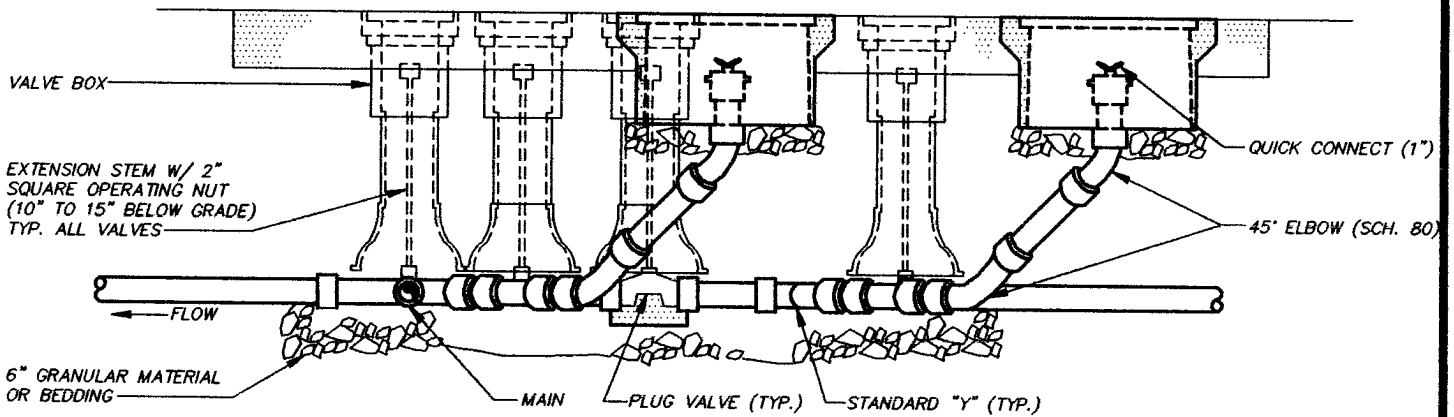


PLAN VIEW



ELEVATION

**NOTES:**

CONCRETE PAD UNDER AND UP ON SIDES OF ALL VALVES TO PREVENT SETTLEMENT AND TWISTING OF VALVE.

CONCRETE PAD SHALL BE MIN. 6" THICK, 3600 PSI

DELETE CLEANOUTS UNLESS SHOWN IN PROFILE OR REQUIRED AT HIGH POINT FOR AIR RELEASE.

**CHARLOTTE—MECKLENBURG  
UTILITY DEPARTMENT  
ENGINEERING DIVISION  
CHARLOTTE, NORTH CAROLINA**

**STANDARD DETAIL  
PRESSURE SEWER**

**VALVE DETAIL  
AT INTERSECTION**

Job No. _____	File No. _____	<b>STANDARD DETAIL PRESSURE SEWER</b>	<b>VALVE DETAIL AT INTERSECTION</b>
PLAN Scales <u>NTS</u>	PROFILE Hor. _____		
PROFILE Vert. _____	As Built _____ Date _____		
Surveyed By _____	Designed By _____	Drawn By <u>KHP</u>	Project—Engr <u>K. Boyer</u>
No. _____	Date _____	By _____	Approved By <u>[Signature]</u> Date <u>1/15/94</u>
Revision _____			Sheet <u>1</u> Of _____