



## CMUD SYSTEM

The Charlotte Mecklenburg Utility Department, a department of the City of Charlotte, provides water and sanitary sewer service throughout Mecklenburg County, including the following cities and towns: Charlotte, Cornelius, Davidson, Huntersville, Matthews, Mint Hill, and Pineville.

The CMUD System components and capabilities are approximately:

- 2,500 miles of water mains
- 2,500 miles of sanitary sewer lines
- 142,000 service connections
- 122 MGD water treatment capacity
- 79 MGD sanitary sewer treatment capacity

## DIRECTORY OF CMUD OFFICES AND FACILITIES

### **OFFICES**

Administrative Headquarters: 5100 Brookshire Blvd. 399-2221  
Engineering Division: 5100 Brookshire Blvd. 399-2221  
System Protection Division: 5100 Brookshire Blvd. 394-9284  
Water Distribution Division: 2035 Patton Ave. 336-2564  
Customer Service Division: 2035 Patton Ave. 336-2564  
Wastewater Collection Division: 4100 W. Tyvola Rd. 357-6064

### **RAW WATER PUMP STATIONS**

Catawba River Pump Station: End of S.R. 2002 off Mt. Holly-Huntersville Rd. 399-2331  
Davidson Raw Water Pump Station: End of Torrence Chapel Rd.

### **WATER TREATMENT PLANTS**

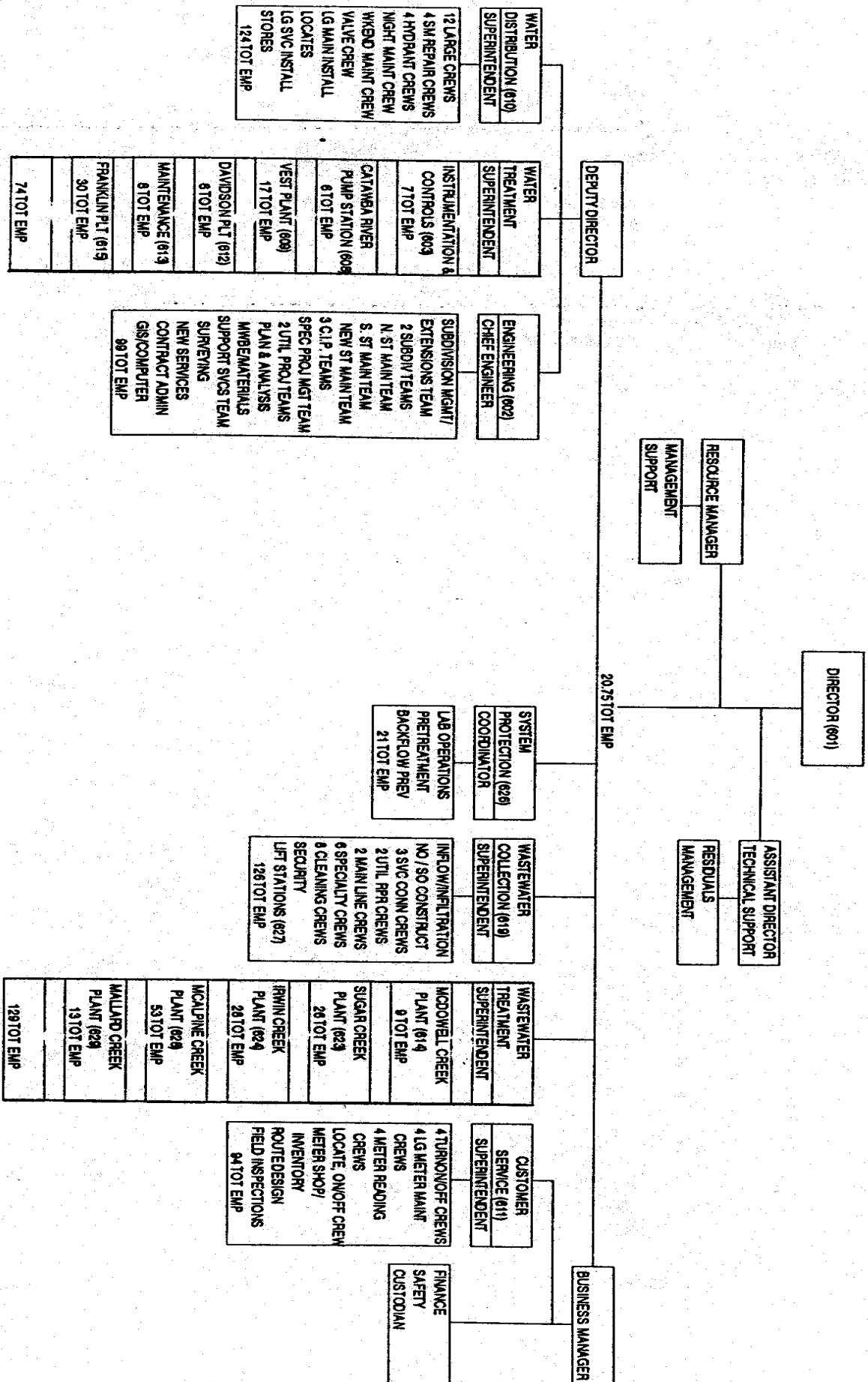
Franklin Water Treatment Plant: 5200 Brookshire Blvd. (96 MGD) 399-2426  
Vest Water Treatment Plant: 820 Beatties Ford Rd. (24.8 MGD) 336-2090  
Davidson Water Treatment Plant: 310 Walnut St., Davidson (1.2 MGD) 892-4220

### **WASTEWATER TREATMENT PLANTS**

Irwin Creek WWTP: off Billy Graham Pkwy. at end of SR 1287 (15 MGD) 357-1344  
Mallard Creek WWTP: on Mallard Creek off N. Hwy 29 (6 MGD) 547-0680  
McAlpine Creek WWTP : Hwy 521 1 mile South of Pineville (40 MGD) 542-0736  
McDowell Creek WWTP: Intersection of McDowell Creek and Neck Rd. (3MGD) 875-6443  
Sugar Creek WWTP: 5301 Closeburn Rd. (15 MGD) 553-2124

Charlotte - Mecklenburg Utility Department  
 Organizational Structure - Fiscal Year 1994

6675 TOTAL EMPLOYEES



UTILITY CONTACT LIST

**Charlotte-Mecklenburg Utility Department**

5100 Brookshire Boulevard  
Charlotte, NC 28216

<b>Administration/Industrial Waste Division</b>	<b>399-2551</b>
<b>Engineering/Planning Division</b>	<b>399-2551</b>
<b>Water Distribution Division</b>	<b>336-2564</b>
<b>Customer Service Division</b>	<b>336-2564</b>
<b>Wastewater Collection Division</b>	<b>357-6064</b>
<b>Water Treatment Division</b>	<b>399-2426</b>
<b>Wastewater Treatment Division</b>	<b>399-2221</b>

**Duke Power Company**

6325 Wilkinson Boulevard  
Charlotte, NC 28214

**382-5547**

**AT&T**

900 Franklin Avenue  
Charlotte, NC 28206

**335-2873**

**Southern Bell Telephone**

4100 Southstream Boulevard  
P.O. Box 30188  
Charlotte, NC 28230

<b>South, Southwest Area</b>	<b>357-9549</b>
<b>CBD, North, Northwest Area</b>	<b>357-9560</b>
<b>East, Southeast</b>	<b>357-9579</b>

**Piedmont Natural Gas Company**

P.O. Box 33068  
Charlotte, NC 28233

**525-5585**

**Cablevision of Charlotte**

P.O. Box 34614  
Morehead Street  
Charlotte, NC 28205

**377-2228, Ext. 311**

**Vision Cable of Charlotte**

4606 Margaret Wallace Road  
Matthews, NC 28105

**545-0136**

**Alltel Carolina, Inc.**

Engineering Department  
P.O. Box 428  
Matthews, NC 28106-0428

**845-7644**

**MCI Telecommunications Corporation**

377 Carowinds Boulevard  
Fort Mill, SC 29715

**1-800-288-6295**

## IMPORTANT TELEPHONE NUMBERS

Ambulance and Rescue - Emergency	911
Atlanta Poison Control Center	1-800-848-6946
CHEMTREC (Hazardous Material Spills)	1-800-424-9300
CMUD Employee Information Line (Updates)	391-5160
CMUD Safety Coordinator	391-5061
Beeper	581-1978
Emergency Management Office	
Civil Defense/Civil Preparedness	336-2412
24-hour (County Police)	336-3333
24-hour (Fire Communications)	336-2441
24-hour (Fire Communications)	336-2578
Emergency Operations Center	336-4470
Public Information Officer	336-4471
Employee Medical Services (Nurse)	336-2792
Environmental Emergency (National Response Center)	1-800-424-8802
Fire Department - Emergency	911
Fire Department - Hazardous Materials	336-2461
FMC Corporation (Hydrogen Peroxide)	554-1551
HOSPITALS	
Carolinas Medical Center	355-2000
Carolinas Medical Center Emergency Dept	355-2171
Mercy Hospital	379-5000
Mercy Hospital Emergency Dept	379-5917
Mercy Hospital South	543-2000
Mercy Hospital South Urgent Care Center	542-6544
Presbyterian Hospital	384-4000
Presbyterian Hospital Emergency Dept	384-4160
University Hospital	548-6000
University Hospital Emergency Dept	548-5600
Jones Chemicals, Inc (Leaking Chlorine Cylinders)	377-1571
Mecklenburg County Environmental Protection Department	
Environmental Spills	336-5500
(After hours call Fire Department or County Police)	336-4391 (Fax)
Mecklenburg County Police	336-3333
Mecklenburg County Police - Emergency	911
Mental Health Services - Emergency	358-2000
Poison Control Center (Mercy Hospital)	379-5827
Police Department - Emergency	911
Public Service & Information	336-2395
Bill Guerrant	377-2838
Beeper	336-9104
Jeannine Clark	333-2975
State Highway Patrol	547-0042
STATE AGENCIES - WATER	
Division of Health Services, Raleigh	
NC Department of Human Resources	1-919-733-2870
Hazardous Waste Division, Raleigh	1-919-733-2178
Mooresville Regional Office	663-1699
FAX	663-6040
Public Water Supply, Raleigh	1-919-733-2321

STATE AGENCIES - WASTEWATER

Division of Environmental Management, Raleigh	1-919-733-5083
NC Dept of Environment, Health, & Natural Resources	1-919-733-9919
FAX	663-1699
Mooresville Regional Office	663-6040
FAX	
Division of Radiation Protection	
NC Dept of Environment, Health, & Natural Resources	1-919-571-4141
FAX	1-919-571-4148

STATE AGENCIES - TRANSPORTATION

Division Office, Charlotte	596-6900
District Office, Albemarle	1-704-982-0101
State Offices, Raleigh	
Design Services	1-919-250-4128
Right-of-way	1-919-733-4420